

Table S1 Details of sequence parameters obtained from multiple scanners

Parameters	Philips Medical Systems						GE Medical System	
	Ingenia		Achieva		Achieva		SIGNA	
	1.5 T		1.5 T		3 T		3 T	
	T2W	T1C	T2W	T1C	T2W	T1C	T2W	T1C
Shape	672×672	320×320 or 480×480	512×512	288×288	1024×1024	224×224 or 256×256 or 288×288	512×512	512×512
Slice	25–30	180–230	23–25	180	25–29	170–191	25–35	276–392
Spacing	0.34, 0.34, 5.50	0.72, 0.72, 0.90 or 0.48, 0.48, 0.50	0.45, 0.45, 6.00	0.83, 0.83, 0.90	0.22, 0.22, 5.50	0.89, 0.89, 0.90 or 0.80, 0.80, 0.90	0.45, 0.45, 0.55	0.45, 0.45, 0.50
TR	5000–7000	25 or 33	4500–5000	25	2000–3100	25	3900–5100	6.10–6.20 or 11.70
TE	100	6–6.50 or 9.21	100	4.00–4.20	80	2.20–2.50	73–80	1.80–1.90
Acquisition Matrix	384×(299 or 254 or 227)	256×256	372×279	268×268	512×390 or 420×335	224×222 or 256×256	460×460 or 416×416	256×256
Flip Angle	90	30	90	30	90	30	142	12

GE, General Electric; T1C, T1-weighted with contrast; T2W, T2-weighted; TE, echo time; TR, repetition time.

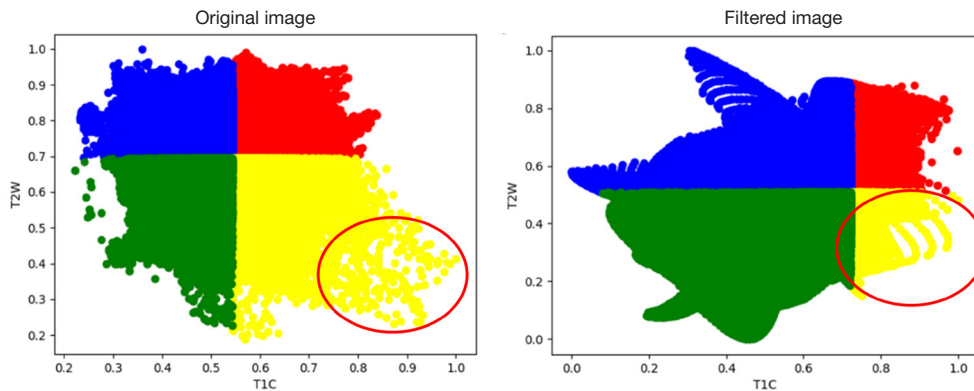


Figure S1 Habitats generated by original, and Laplacian of Gaussian filtered T2W and T1C images using Otsu’s thresholding method. The red circles indicate the visualized localized smoothing of the intensity values of the T2W and T1C images in the filtered images compared to the original images. T1C, T1-weighted with contrast; T2W, T2-weighted.

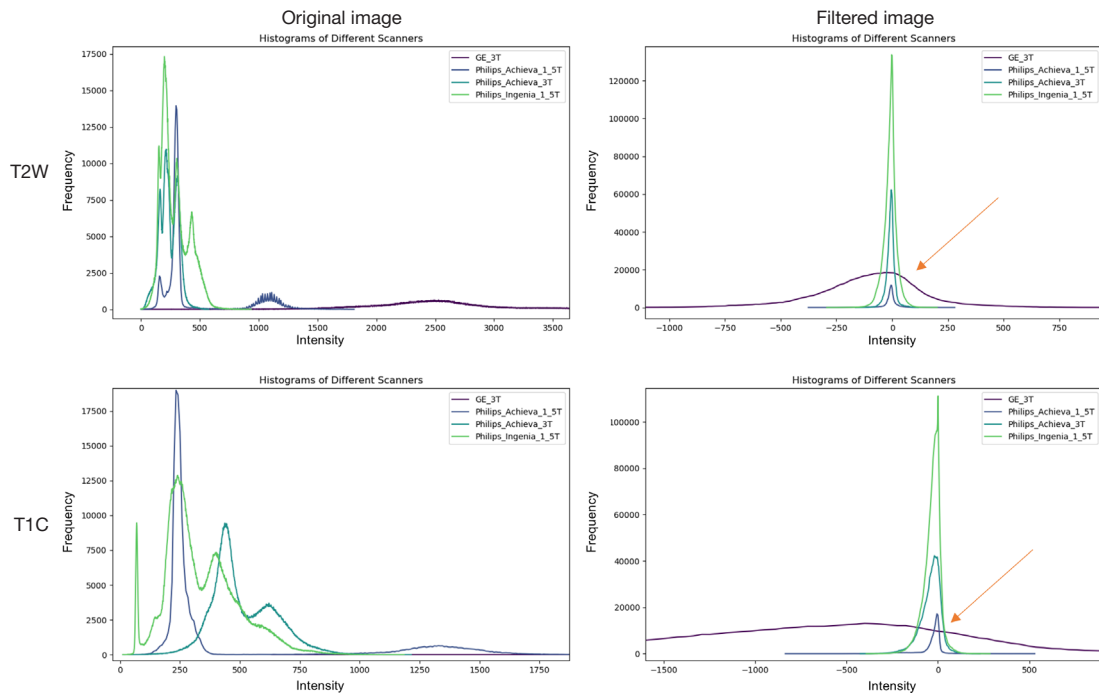


Figure S2 Histograms of the original and filtered T2W and T1C images acquired by four different scanners. The orange arrow indicates recentering of the intensity distribution of the T2W and T1C after filtering. T1C, T1-weighted with contrast; T2W, T2-weighted.

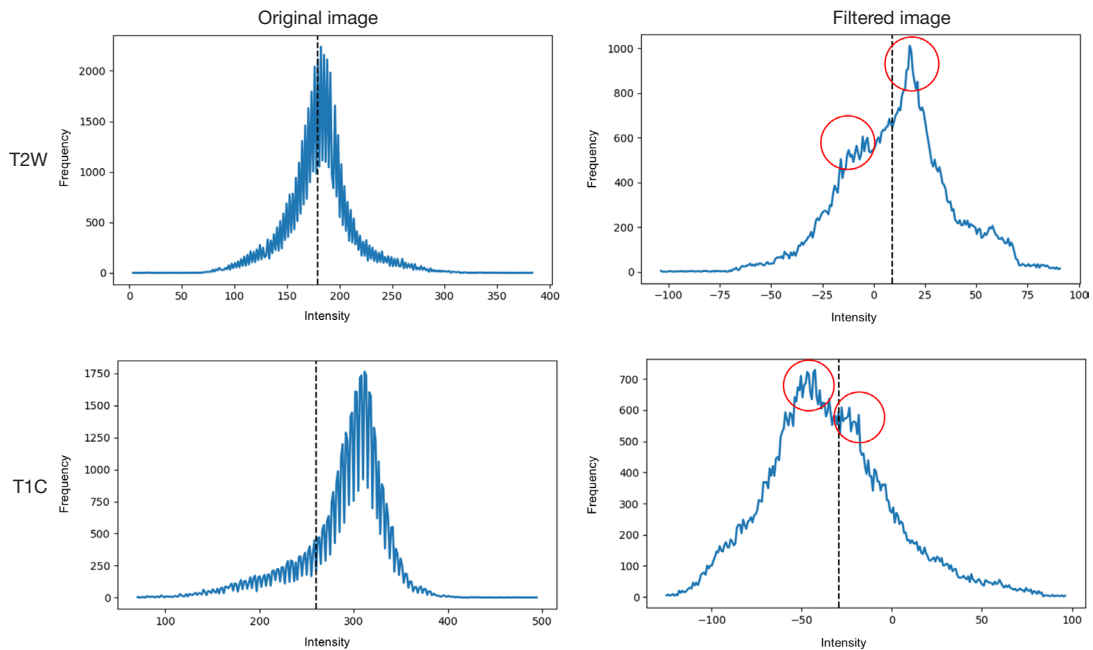


Figure S3 Histograms of original and filtered T2W and T1C images. The dotted line indicates the threshold for distinguishing hyperintensity from hypointensity. The two red circles indicate two distinct peaks of the intensity distribution, better enhanced on the filtered images. T1C, T1-weighted with contrast; T2W, T2-weighted.