

Table S1 MR Sequences and Parameters

Sequence	Fat suppression	TR (ms)	TE (ms)	Flip angle (°)	ST (mm)	Spacing (mm)	Matrix size	FOV (mm ²)	Acquisition Time (s)
GE SIGNA™ Architect 3.0 Tesla (30-channel body anterior coil)									
T2-weighted 2D FSE	Yes	2400	85	111	7	2	320×192	380×304	34
Diffusion-weighted imaging*	Yes	5000	68.544	90	7	2	160×128	380×342	Respiratory gating
In- and opposed-phase T1-weighted imaging	No	233.8	2.3/1.1	55	7	2	160×288	380×323	18
Dynamic T1-weighted 3D GRE [#]	Yes	3.9	1.7	15	3	-	320×240	380×380	15
GE SIGNA™ Premier 3.0 Tesla (30-channel body anterior coil)									
T2-weighted 2D FSE	Yes	2200	85	111	7	2	320×224	304×380	47
Diffusion-weighted imaging*	Yes	5000	56.7	90	7	2	120 × 240	380× 380	Respiratory gating
In- and opposed-phase T1-weighted imaging	No	146.8	2.3/1.1	55	7	2	320×192	342×380	16
Dynamic T1-weighted 3D GRE [#]	Yes	3.2	1.4	15	2.4	-	320×240	380× 380	15
GE Discovery MR 750 3.0 Tesla (16-channel phased-array torso coil)									
T2-weighted 2D FSE	Yes	6315	78	111	6	2	288×244	360×280	Respiratory gating
Diffusion-weighted imaging*	Yes	9230	76.9	90	6	2	128 × 128	360× 380	Respiratory gating
In- and opposed-phase T1-weighted imaging	No	150	2.5/1.3	70	6	2	288×192	420×420	31
Dynamic T1-weighted 3D GRE [#]	Yes	4.1	1.9	15	2	-	512×512	380× 300	15
Philips Ingenia Elition X 3.0 Tesla (16-channel body anterior coil)									
T2-weighted 2D FSE	Yes	1883.51	90	90	6.8	8.5	272×78	239×69	46
Diffusion-weighted imaging*	Yes	1653.65	60.29	90	7	8.5	142×140	141×139	52
In- and opposed-phase T1-weighted imaging	No	164.53	2.30/1.15	50	6	7.5	256×201	206×162	11
Dynamic T1-weighted 3D GRE [#]	Yes	4.20	0.00	10	3	1.5	344×252	303×222	13
Siemens Avanto 1.5 Tesla (30-channel body anterior coil)									
T2-weighted 2D FSE	Yes	2530	84	150	6	7.8	256×187	293×251	47
Diffusion-weighted imaging*	Yes	3600	88	90	6	7.8	192×115	310×232	92
In- and opposed-phase T1-weighted imaging	No	72	4.92/2.22	70	6	7.8	256×158	328×225	16
Dynamic T1-weighted 3D GRE [#]	Yes	5.41	2.39	10	2.5	-	320×138	382×238	15
Siemens Avanto 1.5 Tesla (8-channel body anterior coil)									
T2-weighted 2D FSE	Yes	2710	84	150	7.5	9.75	256×177	308×380	27
Diffusion-weighted imaging*	Yes	2000	72	90	7.5	9.75	192×125	308×379	20
In- and opposed-phase T1-weighted imaging	No	87	4.92/2.22	70	7.5	9.75	256×187	308×380	33
Dynamic T1-weighted 3D GRE [#]	Yes	5.4	2.38	10	2	-	320×131	241×407	15
uMR588 1.5 Tesla (6-channel body anterior coil)									
T2-weighted 2D FSE	Yes	2600	99.2	90	6.5	1.5	256×168	427×320	39
Diffusion-weighted imaging*	Yes	3350	77	90	6.5	10	128×92	320×400	Respiratory gating
In- and opposed-phase T1-weighted imaging	No	117.6	4.7/2.27	60	6.5	1.3	256×174	320×400	29
Dynamic T1-weighted 3D GRE [#]	Yes	4.2	1.88	10	2.5	-	256×154	255×400	13

TR = repetition time; TE = echo time; ST = section thickness; FOV = field of view; 2D = two-dimensional; 3D = three-dimensional; FSE = fast spin-echo; GRE = gradient recall echo. * Images were acquired under free breath (b values: 0, 50, 500, 800, 1000, and 1200 s/mm² [Siemens MAGNETOM Skyra]; 0, 50, 800 s/mm² [Siemens TrioTim; Siemens Avanto]; 0, 50, 1000 s/mm² [Siemens Avanto; GE SIGNA™ Architect; uMR588]; 0, 200, 800, and 1000 s/mm² [GE Discovery MR 750]; 0, 200, 1000 s/mm² [Philips Ingenia Elition X]). [#] Dynamic T1-weighted imaging in the precontrast phase, late arterial phase, portal venous phase (60 s after injection of contrast agent), delayed phase (180 s after injection of contrast agent for ECA-MRI) or transitional phase (180 s after injection of contrast agent for EOB-MRI), and hepatobiliary phase (20 minutes after injection of contrast agent for EOB-MRI). The arterial phase images were acquired with either a bolus-tracking method (acquisition triggered 7s after the arrival of the contrast bolus in the celiac trunk) or a multiple arterial phase imaging technique (images acquired with an 18 s-breath-hold 20 s after contrast agent injection and further reconstructed with a temporal resolution of 3 s). ECA: 0.1 mmol/kg of extracellular contrast agent (gadopentetate dimeglumine, Magnevist®, Bayer Schering Pharma AG, Berlin, Germany; gadoterate meglumine, Dotarem®, Guerbet, Paris, France; gadobenate dimeglumine, MultiHance®, Bracco, Shanghai, China) was injected at a rate of 2.5 ml/s. EOB: 0.025 mmol/kg of hepatobiliary contrast agent (Chia Tai TianQing Pharmaceutical Co., Ltd, Jiangsu, China; Primovist®; Bayer Schering Pharma AG, Berlin, Germany or XianAi®) was injected at a rate of 1.0-2.0 ml/s followed by 20-30 ml saline flush.

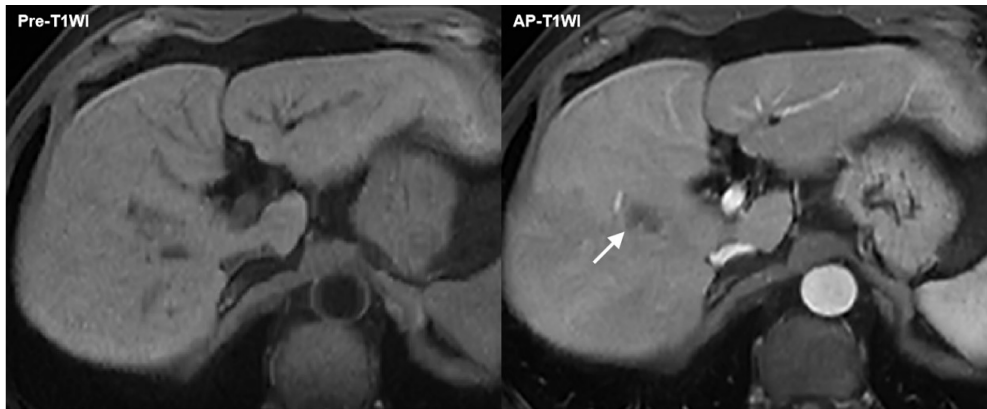


Figure S1 Imaging feature definitions. Treatment-specific expected enhancement: expected temporal and spatial pattern of posttreatment enhancement attributable to treatment-related changes in parenchymal perfusion. (PS: common expected enhancement of TACE: 1. A thin, smooth, linear enhancing rim at the margin of the lesion may persist for months to years. 2. ill-defined regional or geographic hyperenhancement surrounding the treated tumor may be a transient post-procedural perfusion alteration.)

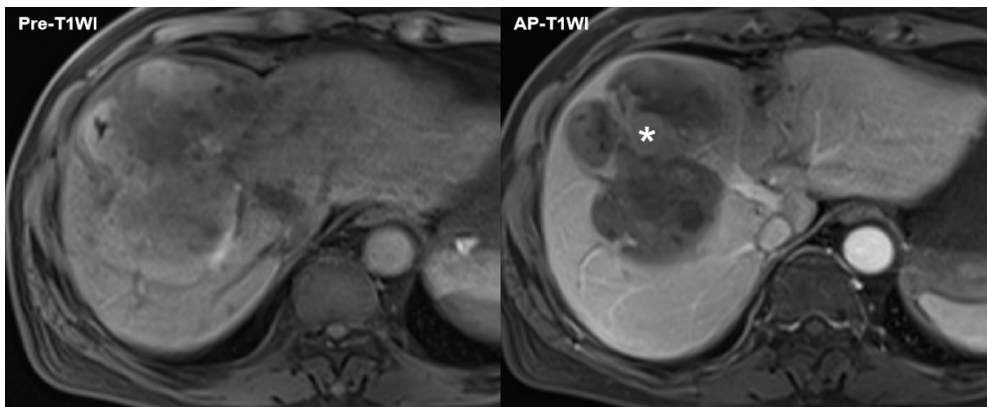


Figure S2 Imaging feature definitions. Masslike enhancement: nodular, masslike, or thick and irregular enhancing area (any degree, any phase) contained within or along the margin of a treated lesion suggests posttreatment tumor viability, excluding treatment-specific expected enhancement.

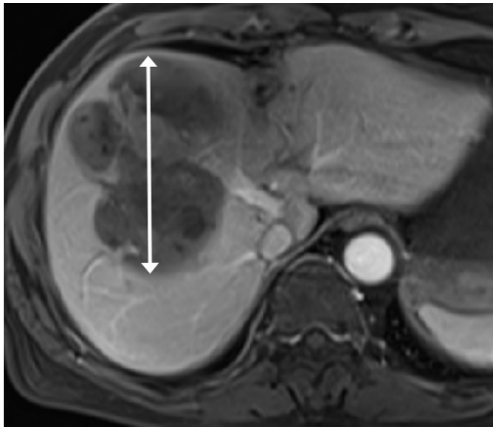


Figure S3 Imaging feature definitions. Tumor size (cm): longest dimension of a largest slice of lesion.

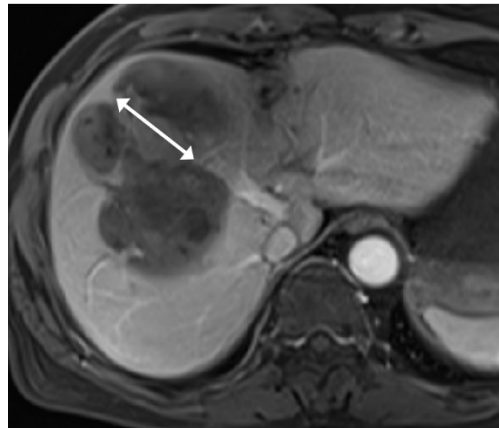


Figure S4 Imaging feature definitions. Viable or equivocally viable disease size (cm): longest dimension through enhancing area of treated lesion, not traversing nonenhancing area.

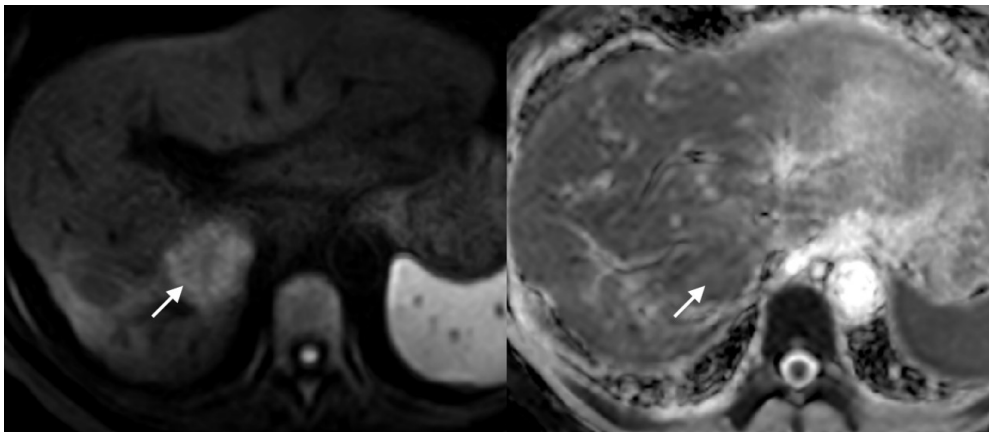


Figure S5 Imaging feature definitions. Diffusion restriction: the signal intensity of the treated lesion higher than the liver parenchyma on high b-value diffusion-weighted imaging (DWI) and lower than the signal of the liver parenchyma on apparent diffusion coefficient (ADC) mapping.

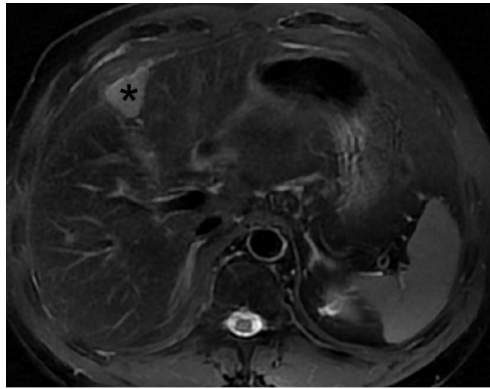


Figure S6 Imaging feature definitions. Mild-moderate T2 hyperintensity: the signal intensity of treated lesion on T2WI was higher than the liver parenchyma and nearly identical to or lower than the non-iron-overloaded spleen.

Table S2 Treatment Details

Transarterial chemoembolization plus systemic therapy regimens	No. of patients
transarterial chemoembolization + Sorafenib (oral; 400 mg; twice a day)	2 (3.9)
transarterial chemoembolization + Sorafenib (oral; 400 mg; twice a day) + camrelizumab (intravenous; 200 mg; once every two weeks)	1 (2)
transarterial chemoembolization + lenvatinib (oral; 8 mg for bodyweight <60 kg or 12 mg for bodyweight ≥60 kg; once a day)	12 (23.5)
transarterial chemoembolization + lenvatinib (oral; 8 mg for bodyweight <60 kg or 12 mg for bodyweight ≥60 kg; once a day) + camrelizumab (intravenous; 200 mg; once every two weeks)	28 (54.9)
transarterial chemoembolization + lenvatinib (oral; 8 mg for bodyweight <60 kg or 12 mg for bodyweight ≥60 kg; once a day) + Zimberelimab (intravenous; 240 mg; once every two weeks)	1 (2)
transarterial chemoembolization + lenvatinib (oral; 8 mg for bodyweight <60 kg or 12 mg for bodyweight ≥60 kg; once a day) + Sintilimab (intravenous; 200 mg; once every three weeks)	4 (7.8)
transarterial chemoembolization + Sorafenib (oral; 400 mg; twice a day) + lenvatinib (oral; 8 mg for bodyweight <60 kg or 12 mg for bodyweight ≥60 kg; once a day) + camrelizumab (intravenous; 200 mg; once every two weeks)	1 (2)
transarterial chemoembolization + camrelizumab (intravenous; 200 mg; once every two weeks)	1 (2)
transarterial chemoembolization + bevacizumab (intravenous; 15 mg/kg; once every three weeks) + Sintilimab (intravenous; 200 mg; once every three weeks)	1 (2)
Total	51

Data in parentheses are percentages.

Table S3 Diagnostic Performances for Detecting Residual Viable Tumor based on Per-reader Interpretations.

Per-lesion (n=63)	Masslike arterial phase hyperenhancement [†]	Masslike washout [†]	Masslike enhancement [†]	LR-TR Nonviable category [†]	LR-TR Viable category [†]
Reader 1					
Any/ Absence of Any residual viable tumor (non-pCR/ pCR)					
Sensitivity	40/48 (83.3) [69.8, 92.5]	25/48 (52.1) [37.2, 66.7]	40/48 (83.3) [69.8, 92.5]	11/15 (73.3) [44.9, 92.2]	40/48 (83.3) [69.8, 92.5]
Specificity	11/15 (73.3) [44.9, 92.2]	14/15 (93.3) [68.1, 99.8]	11/15 (73.3) [44.9, 92.2]	40/48 (83.3) [69.8, 92.5]	11/15 (73.3) [44.9, 92.2]
PPV	40/44 (90.9) [81.1, 95.9]	25/26 (96.2) [78.7, 99.4]	40/44 (90.9) [81.1, 95.9]	11/19 (57.9) [40.5, 73.5]	40/44 (90.9) [81.1, 95.9]
NPV	11/19 (57.9) [40.5, 73.5]	14/37 (37.8) [30.6, 45.7]	11/19 (57.9) [40.5, 73.5]	40/44 (90.9) [81.1, 95.9]	11/19 (57.9) [40.5, 73.5]
Accuracy	51/63 (81.0) [69.1, 89.8]	39/63 (61.9) [48.8, 73.9]	51/63 (81.0) [69.1, 89.8]	51/63 (81.0) [69.1, 89.8]	51/63 (81.0) [69.1, 89.8]
Per-patient (n=51)					
Sensitivity	38/41 (92.7) [80.1, 98.5]	23/41 (56.1) [39.8, 71.5]	38/41 (92.7) [80.1, 98.5]	8/10 (80.0) [44.4, 97.5]	38/41 (92.7) [80.1, 98.5]
Specificity	8/10 (80.0) [44.4, 97.5]	9/10 (90.0) [55.5, 99.7]	8/10 (80.0) [44.4, 97.5]	38/41 (92.7) [80.1, 98.5]	8/10 (80.0) [44.4, 97.5]
PPV	38/40 (95.0) [84.6, 98.5]	23/24 (95.8) [77.8, 99.3]	38/40 (95.0) [84.6, 98.5]	8/11 (72.7) [46.2, 89.2]	38/40 (95.0) [84.6, 98.5]
NPV	8/11 (72.7) [46.2, 89.2]	9/27 (33.3) [25.0, 42.8]	8/11 (72.7) [46.2, 89.2]	38/40 (95.0) [84.6, 98.5]	8/11 (72.7) [46.2, 89.2]
Accuracy	46/51 (90.2) [78.6, 96.7]	32/51 (62.7) [48.1, 75.9]	46/51 (90.2) [78.6, 96.7]	46/51 (90.2) [78.6, 96.7]	46/51 (90.2) [78.6, 96.7]
Reader 2					
Per-lesion (n=63)					
Sensitivity	27/48 (56.3) [41.2, 70.5]	18/48 (37.5) [24.0, 52.6]	27/48 (56.3) [41.2, 70.5]	13/15 (86.7) [59.5, 98.3]	27/48 (56.3) [41.2, 70.5]
Specificity	13/15 (86.7) [59.5, 98.3]	15/15 (100) [78.2, 100]	13/15 (86.7) [59.5, 98.3]	27/48 (56.3) [41.2, 70.5]	13/15 (86.7) [59.5, 98.3]
PPV	27/29 (93.1) [78.4, 98.0]	18/18 (100) [NA, NA]	27/29 (93.1) [78.4, 98.0]	13/34 (38.2) [29.8, 47.4]	27/29 (93.1) [78.4, 98.0]
NPV	13/34 (38.2) [29.8, 47.4]	15/45 (33.3) [28.7, 38.4]	13/34 (38.2) [29.8, 47.4]	27/29 (93.1) [78.4, 98.0]	13/34 (38.2) [29.8, 47.4]
Accuracy	40/63 (63.5) [50.4, 75.3]	33/63 (52.4) [39.4, 65.1]	40/63 (63.5) [50.4, 75.3]	40/63 (63.5) [50.4, 75.3]	40/63 (63.5) [50.4, 75.3]
Per-patient (n=51)					
Sensitivity	23/41 (56.1) [39.8, 71.5]	14/41 (34.1) [20.1, 50.6]	23/41 (56.1) [39.8, 71.5]	8/10 (80.0) [44.4, 97.5]	23/41 (56.1) [39.8, 71.5]
Specificity	8/10 (80.0) [44.4, 97.5]	10/10 (100) [69.2, 100]	8/10 (80.0) [44.4, 97.5]	23/41 (56.1) [39.8, 71.5]	8/10 (80.0) [44.4, 97.5]
PPV	23/25 (92.0) [76.4, 97.6]	14/14 (100) [NA, NA]	23/25 (92.0) [76.4, 97.6]	8/26 (30.8) [21.8, 41.4]	23/25 (92.0) [76.4, 97.6]
NPV	8/26 (30.8) [21.8, 41.4]	10/37 (27.0) [22.9, 31.6]	8/26 (30.8) [21.8, 41.4]	23/25 (92.0) [76.4, 97.6]	8/26 (30.8) [21.8, 41.4]
Accuracy	31/51 (60.8) [46.1, 74.2]	24/51 (47.1) [32.9, 61.5]	31/51 (60.8) [46.1, 74.2]	31/51 (60.8) [46.1, 74.2]	31/51 (60.8) [46.1, 74.2]
Reader 3					
Per-lesion (n=63)					
Sensitivity	33/48 (68.8) [53.7, 81.3]	21/48 (43.8) [29.5, 58.8]	33/48 (68.8) [53.7, 81.3]	14/15 (93.3) [68.1, 99.8]	33/48 (68.8) [53.7, 81.3]
Specificity	14/15 (93.3) [68.1, 99.8]	14/15 (93.3) [68.1, 99.8]	14/15 (93.3) [68.1, 99.8]	33/48 (68.8) [53.7, 81.3]	14/15 (93.3) [68.1, 99.8]
PPV	33/34 (97.1) [83.1, 99.6]	21/22 (95.5) [75.5, 99.3]	33/34 (97.1) [83.1, 99.6]	14/29 (48.3) [37.5, 59.2]	33/34 (97.1) [83.1, 99.6]
NPV	14/29 (48.3) [37.5, 59.2]	14/41 (34.1) [28.1, 40.8]	14/29 (48.3) [37.5, 59.2]	33/34 (97.1) [83.1, 99.6]	14/29 (48.3) [37.5, 59.2]
Accuracy	47/63 (74.6) [62.1, 84.7]	35/63 (55.6) [42.5, 68.1]	47/63 (74.6) [62.1, 84.7]	47/63 (74.6) [62.1, 84.7]	47/63 (74.6) [62.1, 84.7]

Table S3 (continued)

Table S3 (continued)

Per-lesion (n=63)	Masslike arterial phase hyperenhancement [†]	Masslike washout [†]	Masslike enhancement [†]	LR-TR Nonviable category [‡]	LR-TR Viable category [‡]
Per-patient (n=51)					
Sensitivity	29/41 (70.7) [54.5, 83.9]	19/41 (46.3) [30.7, 62.6]	29/41 (70.7) [54.5, 83.9]	9/10 (90.0) [55.5, 99.7]	29/41 (70.7) [54.5, 83.9]
Specificity	9/10 (90.0) [55.5, 99.7]	9/10 (90.0) [55.5, 99.7]	9/10 (90.0) [55.5, 99.7]	29/41 (70.7) [54.5, 83.9]	9/10 (90.0) [55.5, 99.7]
PPV	29/30 (96.7) [81.7, 99.5]	19/20 (95.0) [74.2, 99.2]	29/30 (96.7) [81.7, 99.5]	9/21 (42.9) [30.9, 55.8]	29/30 (96.7) [81.7, 99.5]
NPV	9/21 (42.9) [30.9, 55.8]	9/31 (29.0) [22.4, 36.8]	9/21 (42.9) [30.9, 55.8]	29/30 (96.7) [81.7, 99.5]	9/21 (42.9) [30.9, 55.8]
Accuracy	38/51 (74.5) [60.4, 85.7]	28/51 (54.9) [40.3, 68.9]	38/51 (74.5) [60.4, 85.7]	38/51 (74.5) [60.4, 85.7]	38/51 (74.5) [60.4, 85.7]
Reader 1 > 10%/ ≤10% residual tumor (non-MPR/ MPR)					
Sensitivity	28/30 (93.3) [77.9, 99.2]	21/30 (70.0) [50.6, 85.3]	28/30 (93.3) [77.9, 99.2]	17/33 (51.5) [33.5, 69.2]	28/30 (93.3) [77.9, 99.2]
Specificity	17/33 (51.5) [33.5, 69.2]	25/33 (84.8) [68.1, 94.9]	17/33 (51.5) [33.5, 69.2]	28/30 (93.3) [77.9, 99.2]	17/33 (51.5) [33.5, 69.2]
PPV	28/44 (63.6) [54.9, 71.6]	21/26 (77.4) [65.1, 87.0]	28/44 (63.6) [54.9, 71.6]	17/19 (89.5) [68.2, 97.1]	28/44 (63.6) [54.9, 71.6]
NPV	17/19 (89.5) [68.2, 97.1]	28/37 (75.7) [63.9, 84.6]	17/19 (89.5) [68.2, 97.1]	28/44 (63.6) [54.9, 71.6]	17/19 (89.5) [68.2, 97.1]
Accuracy	45/63 (71.4) [58.7, 82.1]	49/63 (77.8) [65.5, 87.3]	45/63 (71.4) [58.7, 82.1]	45/63 (71.4) [58.7, 82.1]	45/63 (71.4) [58.7, 82.1]
Per-patient (n=51)					
Sensitivity	27/27 (100) [87.2, 100]	19/27 (70.4) [49.8, 86.2]	27/27 (100) [87.2, 100]	11/24 (45.8) [25.6, 67.2]	27/27 (100) [87.2, 100]
Specificity	11/24 (45.8) [25.6, 67.2]	19/24 (79.2) [57.8, 92.9]	11/24 (45.8) [25.6, 67.2]	27/27 (100) [87.2, 100]	11/24 (45.8) [25.6, 67.2]
PPV	27/40 (67.5) [59.0, 75.0]	19/24 (79.2) [62.7, 89.6]	27/40 (67.5) [59.0, 75.0]	11/11 (100) [NA, NA]	27/40 (67.5) [59.0, 75.0]
NPV	11/11 (100) [NA, NA]	19/27 (70.4) [56.2, 81.5]	11/11 (100) [NA, NA]	27/40 (67.5) [59.0, 75.0]	11/11 (100) [NA, NA]
Accuracy	38/51 (74.5) [60.4, 85.7]	38/51 (74.5) [60.4, 85.7]	38/51 (74.5) [60.4, 85.7]	38/51 (74.5) [60.4, 85.7]	38/51 (74.5) [60.4, 85.7]
Reader 2					
Per-lesion (n=63)					
Sensitivity	23/30 (76.7) [57.7, 90.1]	15/30 (50.0) [31.3, 68.7]	23/30 (76.7) [57.7, 90.1]	27/33 (81.8) [64.5, 93.0]	23/30 (76.7) [57.7, 90.1]
Specificity	27/33 (81.8) [64.5, 93.0]	30/33 (90.9) [75.7, 98.1]	27/33 (81.8) [64.5, 93.0]	23/30 (76.7) [57.7, 90.1]	27/33 (81.8) [64.5, 93.0]
PPV	23/29 (79.3) [64.4, 89.0]	15/18 (83.3) [61.6, 94.0]	23/29 (79.3) [64.4, 89.0]	27/34 (79.4) [66.4, 88.3]	23/29 (79.3) [64.4, 89.0]
NPV	27/34 (79.4) [66.4, 88.3]	30/45 (66.7) [57.9, 74.4]	27/34 (79.4) [66.4, 88.3]	23/29 (79.3) [64.4, 89.0]	27/34 (79.4) [66.4, 88.3]
Accuracy	50/63 (79.4) [67.3, 88.5]	45/63 (71.4) [58.7, 82.1]	50/63 (79.4) [67.3, 88.5]	50/63 (79.4) [67.3, 88.5]	50/63 (79.4) [67.3, 88.5]
Per-patient (n=51)					
Sensitivity	21/27 (77.8) [57.7, 91.4]	13/27 (48.1) [28.7, 68.1]	21/27 (77.8) [57.7, 91.4]	20/24 (83.3) [62.6, 95.3]	21/27 (77.8) [57.7, 91.4]
Specificity	20/24 (83.3) [62.6, 95.3]	23/24 (95.8) [78.9, 99.9]	20/24 (83.3) [62.6, 95.3]	21/27 (77.8) [57.7, 91.4]	20/24 (83.3) [62.6, 95.3]
PPV	21/25 (84.0) [67.7, 92.9]	13/14 (92.9) [64.7, 98.9]	21/25 (84.0) [67.7, 92.9]	20/26 (76.9) [61.7, 87.3]	21/25 (84.0) [67.7, 92.9]
NPV	20/26 (76.9) [61.7, 87.3]	23/37 (62.2) [53.1, 70.5]	20/26 (76.9) [61.7, 87.3]	21/25 (84.0) [67.7, 92.9]	20/26 (76.9) [61.7, 87.3]
Accuracy	41/51 (80.4) [66.9, 90.2]	36/51 (70.6) [56.2, 82.5]	41/51 (80.4) [66.9, 90.2]	41/51 (80.4) [66.9, 90.2]	41/51 (80.4) [66.9, 90.2]

Table S3 (continued)

Table S3 (continued)

Per-lesion (n=63)	Masslike arterial phase hyperenhancement [†]	Masslike washout [†]	Masslike enhancement [†]	LR-TR Nonviable category [‡]	LR-TR Viable category [†]
Reader 3					
Per-lesion (n=63)					
Sensitivity	25/30 (83.3) [65.3, 94.4]	18/30 (60.0) [40.6, 77.3]	25/30 (83.3) [65.3, 94.4]	24/33 (72.7) [54.5, 86.7]	25/30 (83.3) [65.3, 94.4]
Specificity	24/33 (72.7) [54.5, 86.7]	29/33 (87.9) [71.8, 96.6]	24/33 (72.7) [54.5, 86.7]	25/30 (83.3) [65.3, 94.4]	24/33 (72.7) [54.5, 86.7]
PPV	25/34 (73.5) [60.9, 83.2]	18/22 (81.8) [63.2, 92.2]	25/34 (73.5) [60.9, 83.2]	24/29 (82.8) [67.7, 91.6]	25/34 (73.5) [60.9, 83.2]
NPV	24/29 (82.8) [67.7, 91.6]	29/41 (70.7) [60.5, 79.2]	24/29 (82.8) [67.7, 91.6]	25/34 (73.5) [60.9, 83.2]	24/29 (82.8) [67.7, 91.6]
Accuracy	49/63 (77.8) [65.5, 87.3]	47/63 (74.6) [62.1, 84.7]	49/63 (77.8) [65.5, 87.3]	49/63 (77.8) [65.5, 87.3]	49/63 (77.8) [65.5, 87.3]
Per-patient (n=51)					
Sensitivity	23/27 (85.2) [66.3, 95.8]	16/27 (59.3) [38.8, 77.6]	23/27 (85.2) [66.3, 95.8]	17/24 (70.8) [48.9, 87.4]	23/27 (85.2) [66.3, 95.8]
Specificity	17/24 (70.8) [48.9, 87.4]	20/24 (83.3) [62.6, 95.3]	17/24 (70.8) [48.9, 87.4]	23/27 (85.2) [66.3, 95.8]	17/24 (70.8) [48.9, 87.4]
PPV	23/30 (76.7) [63.3, 86.2]	16/20 (80.0) [60.8, 91.2]	23/30 (76.7) [63.3, 86.2]	17/21 (81.0) [62.4, 91.6]	23/30 (76.7) [63.3, 86.2]
NPV	17/21 (81.0) [62.4, 91.6]	20/31 (64.5) [52.7, 74.8]	17/21 (81.0) [62.4, 91.6]	23/30 (76.7) [63.3, 86.2]	17/21 (81.0) [62.4, 91.6]
Accuracy	40/51 (78.4) [64.7, 88.7]	36/51 (70.6) [56.2, 82.5]	40/51 (78.4) [64.7, 88.7]	40/51 (78.4) [64.7, 88.7]	40/51 (78.4) [64.7, 88.7]

Data are numbers of lesions and patients, with diagnostic values as percentages in parentheses and 95% confidence intervals in square brackets. APHE: arterial phase hyperintensity; LR-TR: Liver Imaging Reporting and Data System treatment response; MPR: major pathologic response; pCR: pathologic complete response; PPV: positive predicting value; NPV: negative predicting value. [†] The diagnostic performances of characteristics were calculated for the detection of any residual viable tumor and >10% residual viable tumor. [‡] The diagnostic performances of characteristic were calculated for the detection of absence of any residual viable tumor and ≤10% residual viable tumor.