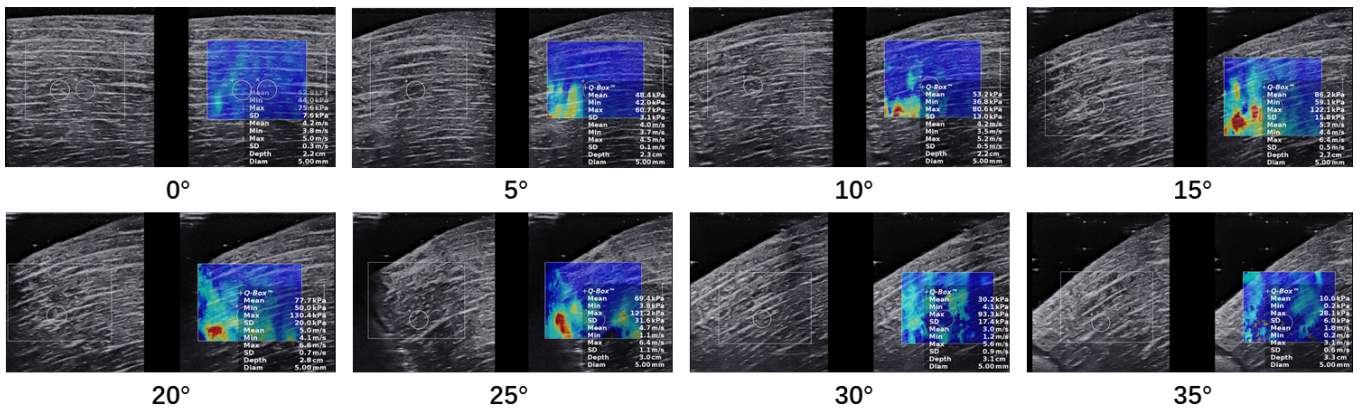


**Figure S1** Schematic diagram of acquisition angle ( $\alpha$ ). The angle  $\alpha$  is changed from  $0^\circ$  to  $40^\circ$ . The long axis direction of the probe was always along the direction of the muscle fiber.



**Figure S2** Elastogram acquired from muscles with different imaging angles ( $0-35^\circ$ ). SD, standard deviation.