

Figure S1 Flowchart of patient selection. US, ultrasound.

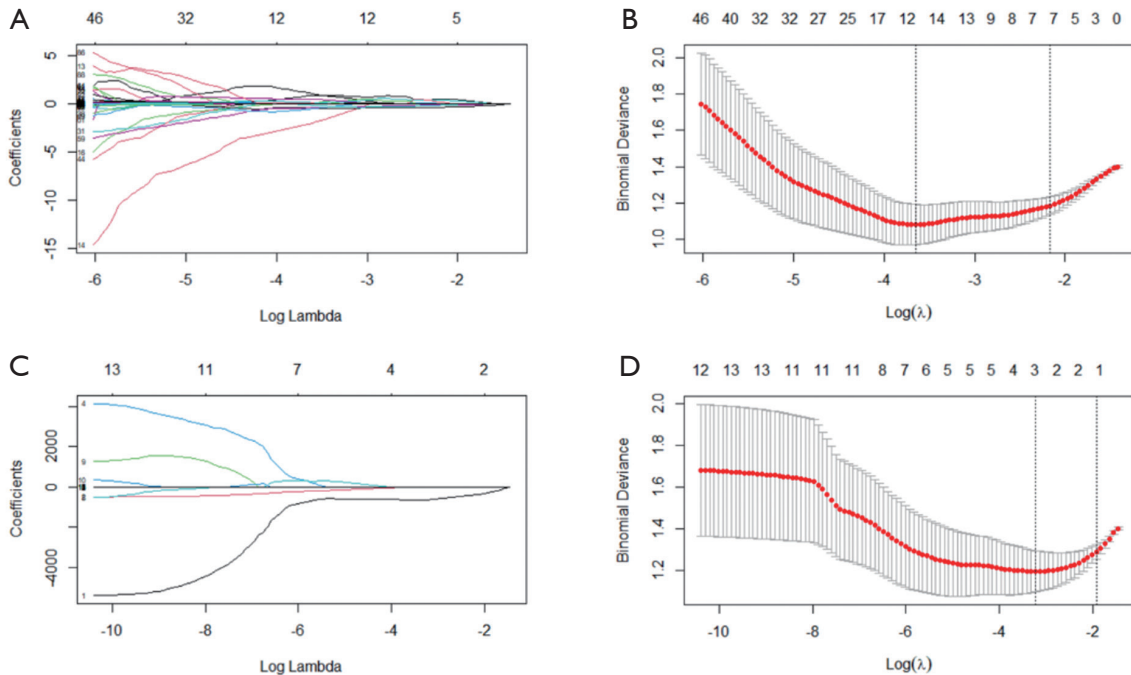


Figure S2 LASSO binary logistic regression results of shear wave elastography (A) and strain elastography (C) characteristics. The optimal penalization coefficient,  $\lambda$ , of shear wave elastography (B) and strain elastography (D) characteristics was selected by repeated procession of the 10-fold cross validation. LASSO, least absolute shrinkage and selection operator.

**Table S1** Diagnostic performance of multivariable diagnosis in the development cohort

| Variable                | Odds ratio (95% CI)  | Wald | P value |
|-------------------------|----------------------|------|---------|
| Shape =1                | 3.393 (0.846–15.452) | 1.68 | 0.093   |
| Margin =1               | 8.742 (2.561–33.294) | 3.36 | 0.001   |
| Posterior features =2   | 1.828 (0.445–7.289)  | 0.86 | 0.389   |
| Vascularity =2          | 3.705 (1.041–14.333) | 1.99 | 0.047   |
| Shell mean/A mean(1.5)E | 6.194 (0.888–57.836) | 1.71 | 0.087   |
| B/A <sup>1.5</sup>      | 1.357 (0.901–2.113)  | 1.44 | 0.151   |