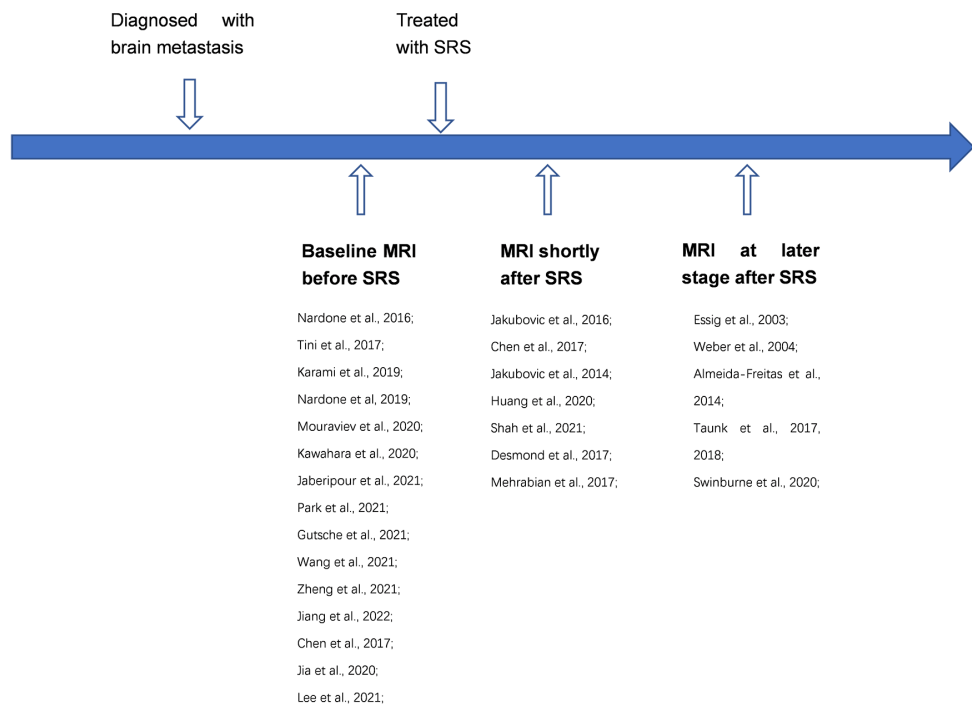


## Appendix 1 The complete advanced search method used for PubMed

The complete advanced search used for PubMed was as follows: (((Brain Metastases) OR (Brain Metastase)) AND (((((((((((((((((((((((Radiosurgery) OR (Gamma Knife Radiosurgery)) OR (Radiosurgery, Gamma Knife)) OR (Gamma Knife Radiosurgeries)) OR (Stereotactic Radiation)) OR (Radiation, Stereotactic)) OR (Stereotactic Radiations)) OR (Stereotactic Radiosurgery)) OR (Radiosurgery, Stereotactic)) OR (Stereotactic Radiosurgeries)) OR (Radiosurgery, Linear Accelerator)) OR (Linear Accelerator Radiosurgeries)) OR (LINAC Radiosurgery)) OR (LINAC Radiosurgeries)) OR (Radiosurgery, LINAC)) OR (Linear Accelerator Radiosurgery)) OR (Stereotactic Body Radiotherapy)) OR (Radiotherapy, Stereotactic Body)) OR (Stereotactic Body Radiotherapies)) OR (CyberKnife Radiosurgery)) OR (CyberKnife Radiosurgeries)) OR (Radiosurgery, CyberKnife)) OR (Stereotactic Radiation Therapy)) OR (Radiation Therapy, Stereotactic)) OR (Stereotactic Radiation Therapies)) OR (Therapy, Stereotactic Radiation))) AND (((((((((((((((((((((((Imaging, Magnetic Resonance) OR (NMR Imaging)) OR (Imaging, NMR)) OR (Tomography, NMR)) OR (Tomography, MR)) OR (MR Tomography)) OR (NMR Tomography)) OR (Zeugmatography)) OR (Imaging, Chemical Shift)) OR (Chemical Shift Imagings)) OR (Imagings, Chemical Shift)) OR (Shift Imaging, Chemical)) OR (Shift Imagings, Chemical)) OR (Chemical Shift Imaging)) OR (Magnetic Resonance Image)) OR (Image, Magnetic Resonance)) OR (Magnetic Resonance Images)) OR (Resonance Image, Magnetic)) OR (Magnetization Transfer Contrast Imaging)) OR (Tomography, Proton Spin)) OR (Proton Spin Tomography)) OR (fMRI)) OR (MRI, Functional)) OR (Functional MRI)) OR (Functional MRIs)) OR (MRIs, Functional)) OR (Functional Magnetic Resonance Imaging)) OR (Magnetic Resonance Imaging, Functional)) OR (Spin Echo Imaging)) OR (Echo Imaging, Spin)) OR (Echo Imagings, Spin)) OR (Imaging, Spin Echo)) OR (Imagings, Spin Echo)) OR (Spin Echo Imagings))) AND (((((((((((((((((((Outcome, Treatment) OR (Patient-Relevant Outcome)) OR (Outcome, Patient-Relevant)) OR (Outcomes, Patient-Relevant)) OR (Patient Relevant Outcome)) OR (Patient-Relevant Outcomes)) OR (Clinical Effectiveness)) OR (Effectiveness, Clinical)) OR (Treatment Effectiveness)) OR (Effectiveness, Treatment)) OR (Rehabilitation Outcome)) OR (Outcome, Rehabilitation)) OR (Treatment Efficacy)) OR (Efficacy, Treatment)) OR (Clinical Efficacy)) OR (Efficacy, Clinical)) OR (Prognoses)) OR (Prognostic Factors)) OR (Factor, Prognostic)) OR (Factors, Prognostic)) OR (Prognostic Factor)).



**Figure S1** Time points.