

Figure S1 Digital subtraction angiography findings of the bilateral central retinal artery occlusion. (A,B) Occlusion in the bilateral (A: right, B: left) central retinal arteries (yellow arrow), where the central retinal artery enters the optic nerve, which is branch of the ophthalmic artery (white arrowhead) of internal carotid artery (white arrow) confirmed on digital subtraction angiography.

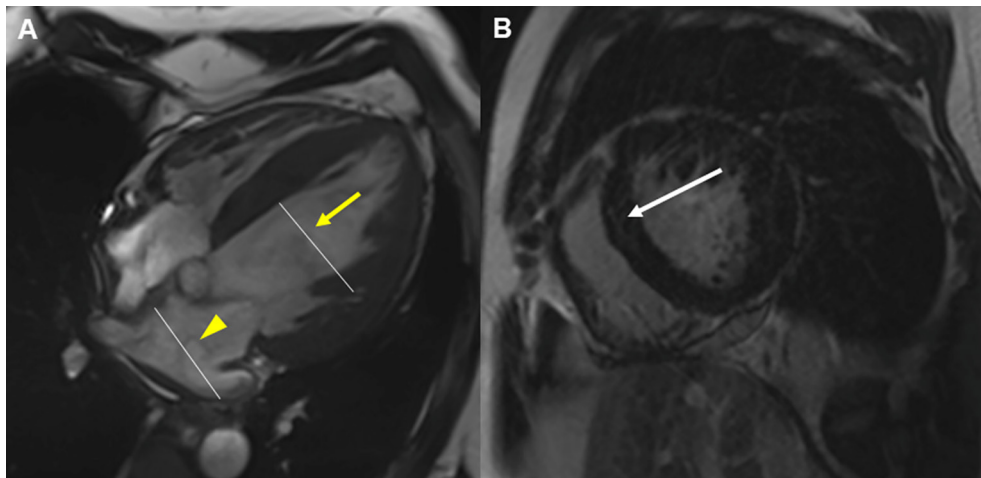


Figure S2 Cardiac magnetic resonance imaging finding of dilated cardiomyopathy. (A,B) Dilated left ventricle (end-diastolic diameter 60 mm, yellow arrow), enlarged left atrium (anteroposterior diameter 54 mm, yellow arrowhead), hypokinesia of the left ventricle (ejection fraction =23%), and delayed enhancement in the mid-wall (white arrow) on cardiac magnetic resonance imaging.