

Figure S1 Training samples with large error showing locator scan positions selected by the expert-level user (red), and CNN (blue). The network prediction showed an error greater than 30 mm on a total of 7 out of 298 samples. These errors can be divided into two categories: prediction errors (A-C) and labelling errors (D-G). Importantly, the network was able to accurately predict locator scan positions in the presence of artifacts and implants (D,G). CNN, convolutional neural network.

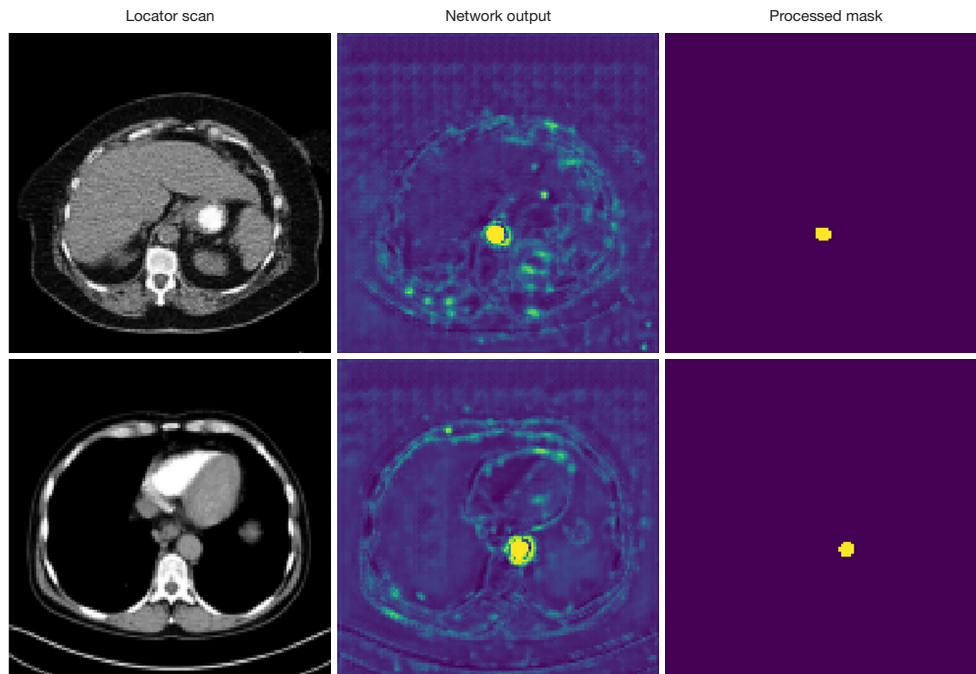


Figure S2 Examples of binary thresholding to produce the final predicted binary mask used for evaluation.