

Figure S1 The ROC curves of LR (A), DT (B), SVM (C), and AdaBoost (D) in the training cohort (blue line), test cohort (red line), and validation cohort (green line), respectively. ROC, receiver operating characteristic; LR, logistic regression; DT, decision tree; SVM, support vector machine; AdaBoost, adaptive boost.

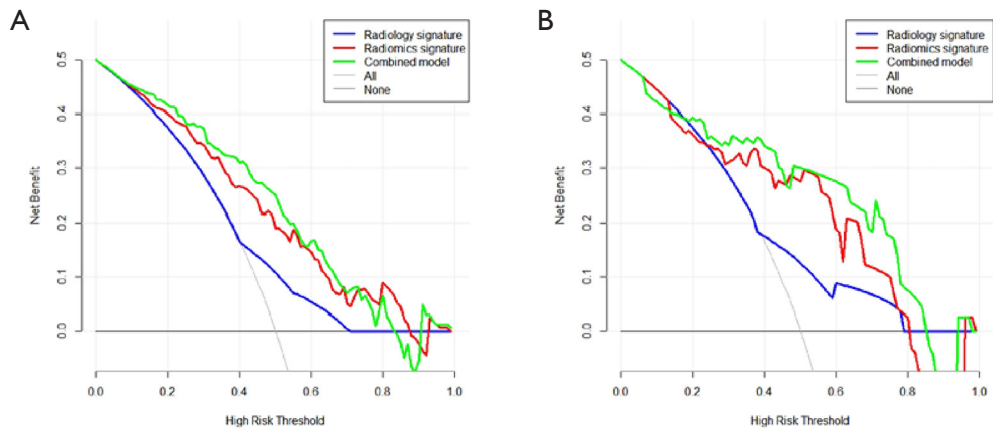


Figure S2 The decision curve of the 3 models in the test (A) and validation (B) cohorts.

Table S1 The logistic regression parameters of the radiomics features

Numbers	OR (95% CI)	Z value	P value
X1	2.618 (0.540-2.701)	1.195	0.232
X2	0.042 (0.000-266.155)	-0.711	0.477
X3	0.070 (0.000-1124.381)	-0.538	0.590
X4	0.242 (0.045-1.294)	-1.659	0.097
X5	0.001 (0.000-1.938)	-1.796	0.073
X6	0.658 (0-5.655e+56)	-0.006	0.995
X7	NA	NA	NA
X8	0.398 (0-4.481e+55)	-0.014	0.989
X9	2.048 (0.956-4.388)	1.844	0.065
X10	10.535 (0.232-478.233)	1.210	0.226
X11	NA	NA	NA
X12	1.335 (0.186-9.571)	0.288	0.774
X13	NA	NA	NA
X14	0.004 (0.000-1.318)	-1.865	0.062

CI, confidence interval; LR, logistic regression; OR, odds ratio. NA, not applicable.

Table S2 The logistic regression parameters of the nomogram variables

Variables	OR (95% CI)	Z value	P value
Radiomics score	2.923 (2.031-4.208)	5.771	<0.001
Enhanced homogeneity	2.287 (1.413-3.701)	3.369	0.001

CI, confidence interval; LR, logistic regression; OR, odds ratio.