

Table S1 Wiberg classification of the patella

Wiberg classification	Classification criteria
Wiberg type I	The ridge was seen to be situated approximately in the center of the patella
Wiberg type II	The ridge was situated slightly toward the medial border of the patella, and the medial facet was smaller than the lateral
Wiberg type III	The ridge was displaced medially to such a degree that there was hardly any room left over for the medial facet

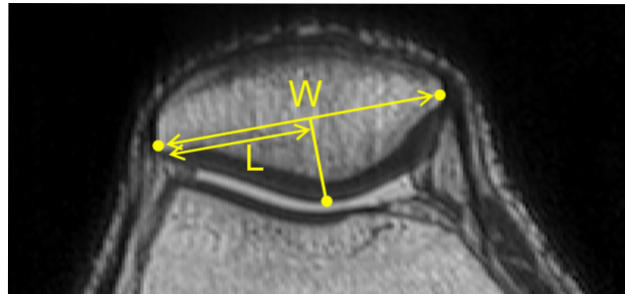


Figure S1 Wiberg's index of the patella. Patellar width (W) was measured between the medial and lateral patellar margins at the level of the greatest patellar width. The lateral patellar width (L) is the distance from the lateral patellar margin to the line perpendicular to the patellar width and crossing the ridge point. Wiberg index = L/W .