

Supplementary

Table S1 Parameters of sequences on a 3.0-T Siemens MR scanner

Parameters	TOF	T1
TR (ms)	22	900
TE (ms)	3.74	20
FOV (mm ²)	200×175	200×158
Matrix	320×240	320×252
Slice thickness (mm)	0.6	0.7
Flip angle (°)	18	Variable
Turbo factor (ms)	–	52
Bandwidth (Hz/pixel)	186	326
Scan time	4 min 55 s	9 min 53 s

TOF, time of flight; T1, T1-weighted imaging; TR, repetition time; TE, echo time; FOV, field of view.

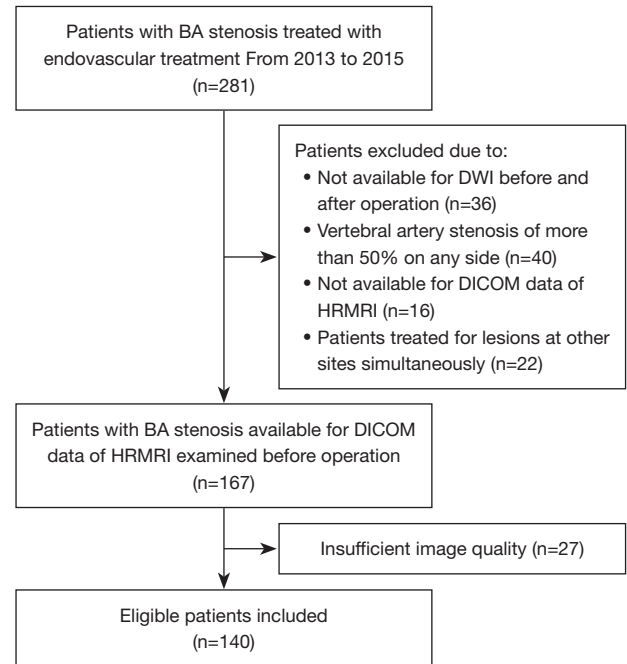


Figure S1 Flow chart of screening