

Table S1 The MRI protocol parameters for GE (Signa Excite 1.5T)

Parameters	T1WI		T2WI		Contrast-enhanced T1WI			SS-EPI DWI
	Axial	Axial	Sagittal	Coronal	Axial	Sagittal	Coronal	Axial
Slice thickness, mm	4	4	4	4	4	4	4	4
Slice gap, mm	1.0	1.0	0.5	1.0	Volume scanning	Volume scanning	Volume scanning	1
TR, ms	400	2,700	3,000	3,000	3.6	4.1	4	4,000
TE, ms	8	68	102	85	1.7	5.1	1.9	74
Matrix	288×192	320×224	320×288	288×192	256×224	288×192	288×192	128×128
FOV, mm	320×320	300×300	260×260	40×400	360×360	320×320	360×360	360×360
b value, s/mm ²	–	–	–	–	–	–	–	0, 800
Average	2	4	2	4	2	2	2	4

MRI, magnetic resonance imaging; T1WI, T1-weighted imaging; T2WI, T2-weighted imaging; SS-EPI, single-shot echo-planar imaging; DWI, diffusion-weighted imaging; TR, repetition time; TE, echo time; FOV, field of view.

Table S2 The MRI protocol parameters for PHILIPS (3.0T Ingenia)

Parameters	T1WI		T2WI		Contrast-enhanced T1WI			SS-EPI DWI
	Axial	Axial	Sagittal	Coronal	Axial	Sagittal	Coronal	Axial
Slice thickness, mm	4	4	4	4	4	3	4	4
Slice gap, mm	-2	1	1	1	-2	-1.5	-2	1
TR, ms	4.0	4,009	3,546	4,418	3.8	3.6	3.5	6,000
TE, ms	1.44	100	98	80	1.33	1.32	1.3	53
Matrix	316×235	320×320	316×316	400×312	268×220	240×198	252×221	120×93
FOV, mm	380×304	240×240	253×253	280×280	400×353	360×320	400×353	300×238
b value, s/mm ²	–	–	–	–	–	–	–	0, 1,000
Average	1	1.3	1	1.2	1	1	1	3

MRI, magnetic resonance imaging; T1WI, T1-weighted imaging; T2WI, T2-weighted imaging; SS-EPI, single-shot echo-planar imaging; DWI, diffusion-weighted imaging; TR, repetition time; TE, echo time; FOV, field of view.

Table S3 The MRI protocol parameters for Siemens (Prisma 3.0T)

Parameters	T1WI		T2WI		Contrast-enhanced T1WI			Resolve DWI DWI
	Axial	Axial	Sagittal	Coronal	Axial	Sagittal	Coronal	Axial
Slice thickness, mm	3	4	4	4	2	2.5	3	4
Slice gap, mm	0.6	0.8	1.2	0.8	0.1	0.5	0.6	0.8
TR, ms	4.02	3,800	4,800	7,000	4.54	3.14	3.16	4,100
TE, ms	1.32	83	116	74	2.1	1.17	1.11	50
Matrix	188×320	240×320	288×384	210×320	195×320	175×320	182×320	72×128
FOV, mm	360×281	240×240	230×230	280×245	320×260	350×273	380×310	360×200
b value, s/mm ²	–	–	–	–	–	–	–	0, 1,000
Average	1	1	1	1	1	1	1	3

MRI, magnetic resonance imaging; T1WI, T1-weighted imaging; T2WI, T2-weighted imaging; DWI, diffusion-weighted imaging; TR, repetition time; TE, echo time; FOV, field of view.

Table S4 The MRI protocol parameters for GE (750W 3.0T)

Parameters	T1WI		T2WI		Contrast-enhanced T1WI			SS-EPI DWI
	Axial	Axial	Sagittal	Coronal	Axial	Sagittal	Coronal	Axial
Slice thickness, mm	5.5	4	4	4	3.0	2	3	5.5
Slice gap, mm	1.0	1.0	0.5	0.5	Volume scanning	Volume scanning	Volume scanning	1
TR, ms	600	5,725	3,860	4,451	4.5	4.3	4.0	4,245
TE, ms	42	85	102	102	1.7	2	2.4	80
Matrix	320×224	300×256	384×256	320×256	288×224	288×192	256×224	128×128
FOV, mm	300×300	300×300	280×280	280×280	360×360	340×340	480×480	320×320
B value, s/mm ²	–	–	–	–	–	–	–	0, 1,000
Average	2	4	4	2	2	2	1	4

MRI, magnetic resonance imaging; T1WI, T1-weighted imaging; T2WI, T2-weighted imaging; SS-EPI, single-shot echo-planar imaging; DWI, diffusion-weighted imaging; TR, repetition time; TE, echo time; FOV, field of view.

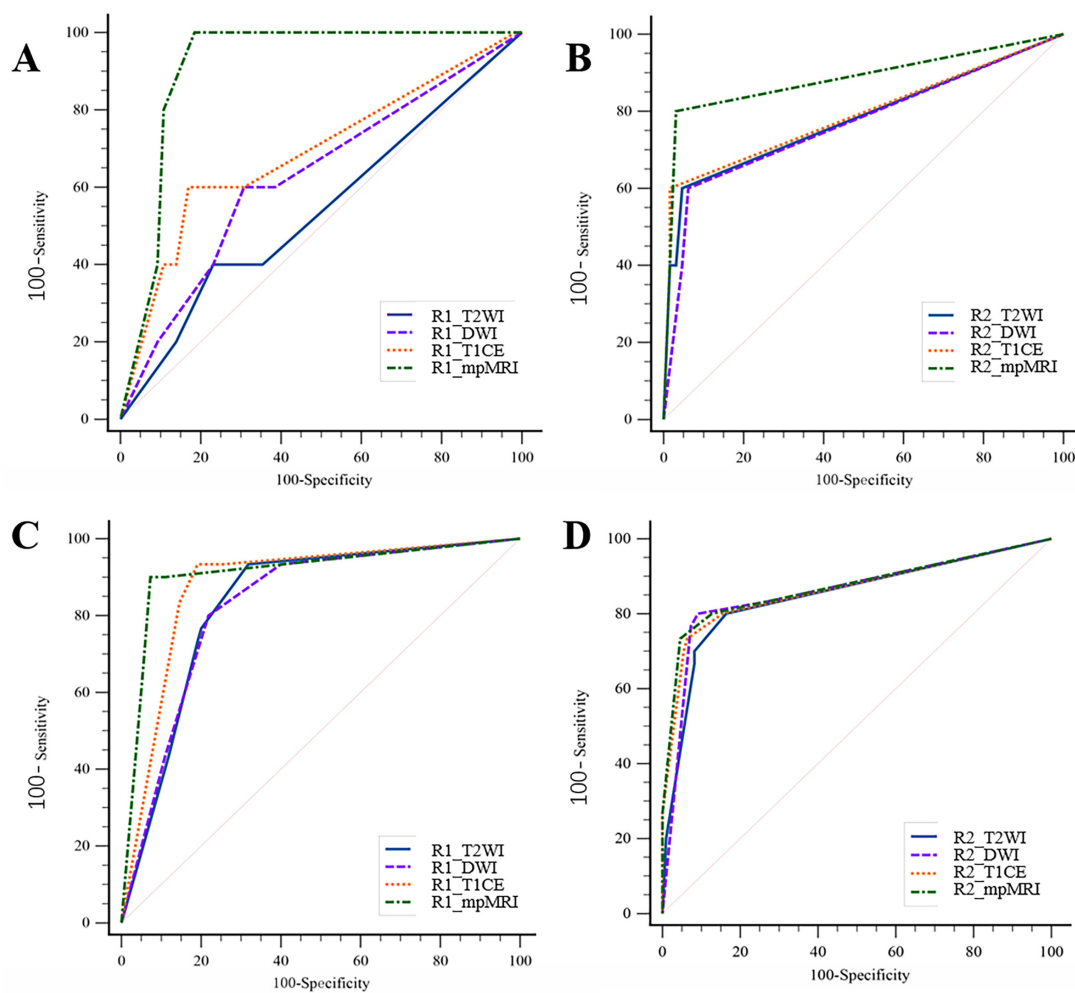


Figure S1 The AUROC for identifying DMI. The 4 curves represent the diagnostic performance of T2WI, DWI, DCE, mpMRI, respectively. (A-D) represent the AUROC of reviewer 1 in group A, reviewer 2 in group A, reviewer 1 in group B and reviewer 2 in group B, respectively. Group A, patients with endometrial cancer coexisting with adenomyosis; Group B, patients with endometrial cancer without coexisting with adenomyosis. R1, reviewer 1; R2, reviewer 2; T2WI, T2-weighted imaging; DWI, diffusion-weighted imaging; T1CE, T1-weighted contrast-enhanced; mpMRI, multiparametric magnetic resonance imaging; DMI, deep myometrial invasion; AUROC, area under the receiver operating curve.

Table S5 Interpretation results of two reviewers and consensus for different subtypes of adenomyosis on T2WI, DWI, T1CE, mpMRI

Reviewer	Sequence	Status	Spatial relationship			Affected area			Affected pattern			Affected size			
		Correct interpretation	Adjacent	Non-adjacent	P value	Internal adenomyosis	External adenomyosis	P value	Diffuse	Focal	P value	<1/3 of uterine wall	<2/3 of uterine wall	>2/3 of uterine wall	P value
R1	T2WI	Yes	18	30	0.184	42	6	0.279	37	11	0.028*	6	15	27	0.045*
		No	11	9		15	5		10	10		6	9	5	
	DWI	Yes	19	30	0.300	43	6	0.269	36	13	0.212	8	14	27	0.081
		No	10	9		14	5		11	8		4	10	5	
	T1CE	Yes	24	33	1.000	51	6	0.012*	42	15	0.082	9	19	29	0.340
		No	5	6		6	5		5	6		3	5	3	
mpMRI	Yes	24	36	0.272	52	8	0.113	43	17	0.240	11	19	30	0.255	
	No	5	3		5	3		4	4		1	5	2		
R2	T2WI	Yes	27	36	1.000	54	9	0.181	45	18	0.167	10	23	30	0.395
		No	2	3		3	2		2	3		2	1	2	
	DWI	Yes	27	36	1.000	53	10	1.000	45	18	0.167	11	22	30	1.000
		No	2	3		4	1		2	3		1	2	2	
	T1CE	Yes	28	36	0.631	55	9	0.120	46	18	0.084	10	24	30	0.121
		No	1	3		2	2		1	3		2	0	2	
mpMRI	Yes	28	36	0.631	55	9	0.120	46	18	0.084	10	24	30	0.121	
	No	1	3		2	2		1	3		2	0	2		
Consensus	mpMRI	Yes	27	37	1.000	54	10	0.515	45	19	0.582	11	23	30	1.000
		No	2	2		3	1		2	2		1	1	2	

*, P<0.05. T2WI, T2-weighted imaging; DWI, diffusion-weighted imaging; T1CE, T1-weighted contrast-enhanced imaging; mpMRI, multiparametric magnetic resonance imaging; R1, reviewer 1; R2, reviewer 2.