

Figure S1 Multi-planar reconstruction with two orthogonal long-axis views examining the coaxiality of the delivery catheter. Of note, in the right upper panel, the annular plane is visualized without the delivery catheter.

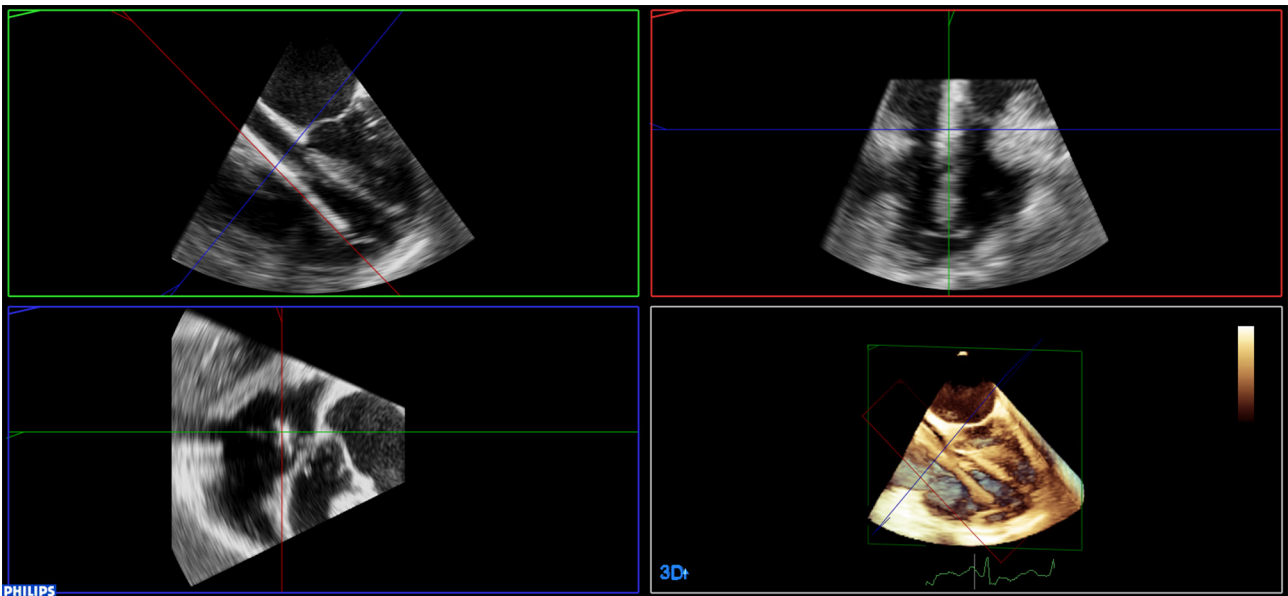


Figure S2 Multi-planar reconstruction with two orthogonal long-axis views examining the coaxiality of the delivery catheter. After the annular plane is confirmed, the long-axis views can be adjusted to cut through the delivery catheter.

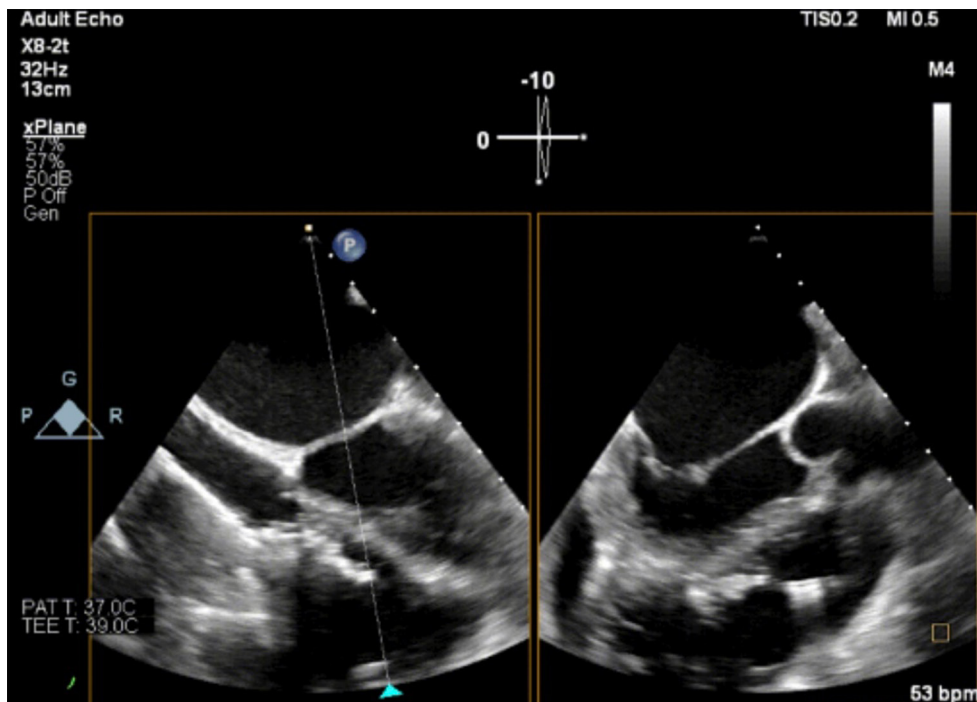


Figure S3 Non-standard mid-esophageal 4-chamber view and the orthogonal right ventricular short-axis view. The anchors are shown to be parallel to the inter-ventricular septum and not in contact with the posterior septum in the left panel but are contacting the posterior septum in the right panel.

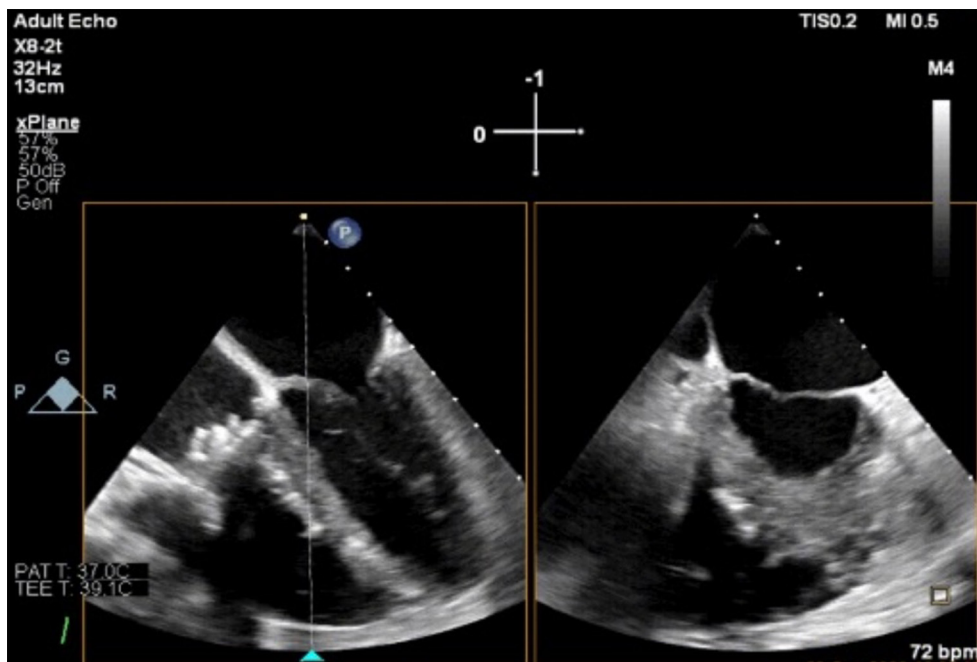


Figure S4 Standard mid-esophageal 4-chamber and right ventricular short-axis views. The anchors are shown to be parallel to the inter-ventricular septum and in contact with the posterior septum both views.