

Table S1 Clinical data of 37 patients without intraspinal metastasis

Patients and tumor characteristics	Values
Sex	
Male	23 (62.2)
Female	14 (37.8)
Age at ¹⁸ F-FDG PET/CT examination (years)	58.1 (7–81)
Location of primary tumor	
Lung cancer (adenocarcinoma)	21 (56.8)
Lung cancer (small cell lung cancer)	1 (2.7)
Breast (ductal carcinoma)	3 (8.1)
Colorectal cancer	3 (8.1)
Prostate	2 (5.4)
Nasopharyngeal	2 (5.4)
Kidney (clear cell carcinoma)	1 (2.7)
Liver (cholangiocarcinoma)	1 (2.7)
Epiglottis carcinoma	1 (2.7)
Adrenal (neuroblastoma)	1 (2.7)
Heel melanoma	1 (2.7)
Metastases	
Yes	37 (100.0)
No	0 (0.0)
Survival status at the end date of follow-up	
Alive	6 (16.2)
Dead	31 (83.8)

Data are presented as n (%) or mean (range). ¹⁸F-FDG, ¹⁸F-fluorodeoxyglucose; PET, positron emission tomography; CT, computed tomography.

Table S2 Comparison of consistency of ¹⁸F-FDG PET/CT and MRI in diagnosis of patients with SLM

Patients with SLM no.	No. of SLM	Diagnostic results	
		Negotiation on PET/CT	MRI reports
1	1	–	–
2	1	+	+
3	1	–	–
4	1	+	+
5	1	+	+
	2	+	+
6	1	+	+
	2	+	+
	3	+	–
	4	+	+
	5	+	+
7	1	+	+
	2	+	–
8	1	+	+
9	1	+	+
	2	+	+
10	1	+	–
11	1	+	+
12	1	+	+
13	1	+	+
14	1	+	+
15	1	+	+
	2	+	+
	3	+	–
	4	+	+
	5	+	+
	6	+	–
16	1	+	+

–, there is no SLM; +, there is(are) SLM(s). ¹⁸F-FDG, ¹⁸F-fluorodeoxyglucose; PET, positron emission tomography; CT, computed tomography; MRI, magnetic resonance imaging; SLM, leptomeningeal metastases of spinal cord.

Table S3 Comparison of consistency of ¹⁸F-FDG PET/CT and MRI in diagnosis of patients without IM

Patients without IM no.	Diagnostic results		
	Negotiation on PET/CT	SUVmax	MRI reports
1	-	1.8	-
2	-	1.4	-
3	-	1.9	-
4	-	1.2	-
5	-	1.9	-
6	-	2.6	-
7	-	1.9	-
8	-	2.2	-
9	-	2.0	-
10	-	1.7	-
11	-	1.3	-
12	-	1.7	-
13	-	2.0	-
14	-	2.4	-
15	-	2.4	-
16	-	1.3	-
17	-	2.7	-
18	-	1.6	-
19	-	2.1	-
20	-	2.0	-

Table S3 (continued)

Table S3 (continued)

Patients without IM no.	Diagnostic results		
	Negotiation on PET/CT	SUVmax	MRI reports
21	-	2.3	-
22	-	2.3	-
23	-	2.1	-
24*	+	2.7	-
25	-	1.7	-
26	-	1.9	-
27	-	2.2	-
28*	+	2.9	-
29	-	2.0	-
30*	+	3.3	-
31	-	3.1	-
32	-	2.6	-
33	-	2.2	-
34	-	2.7	-
35*	+	2.9	-
36	-	1.3	-
37	-	1.3	-

-, there is no SLM; +, there is(are) SLM(s). *, linear FDG uptake. ¹⁸F-FDG, ¹⁸F-fluorodeoxyglucose; PET, positron emission tomography; CT, computed tomography; MRI, magnetic resonance imaging; IM, intraspinal metastasis; PET, positron emission tomography; CT, computed tomography; SUVmax, maximum standardized uptake value; MRI, magnetic resonance imaging.

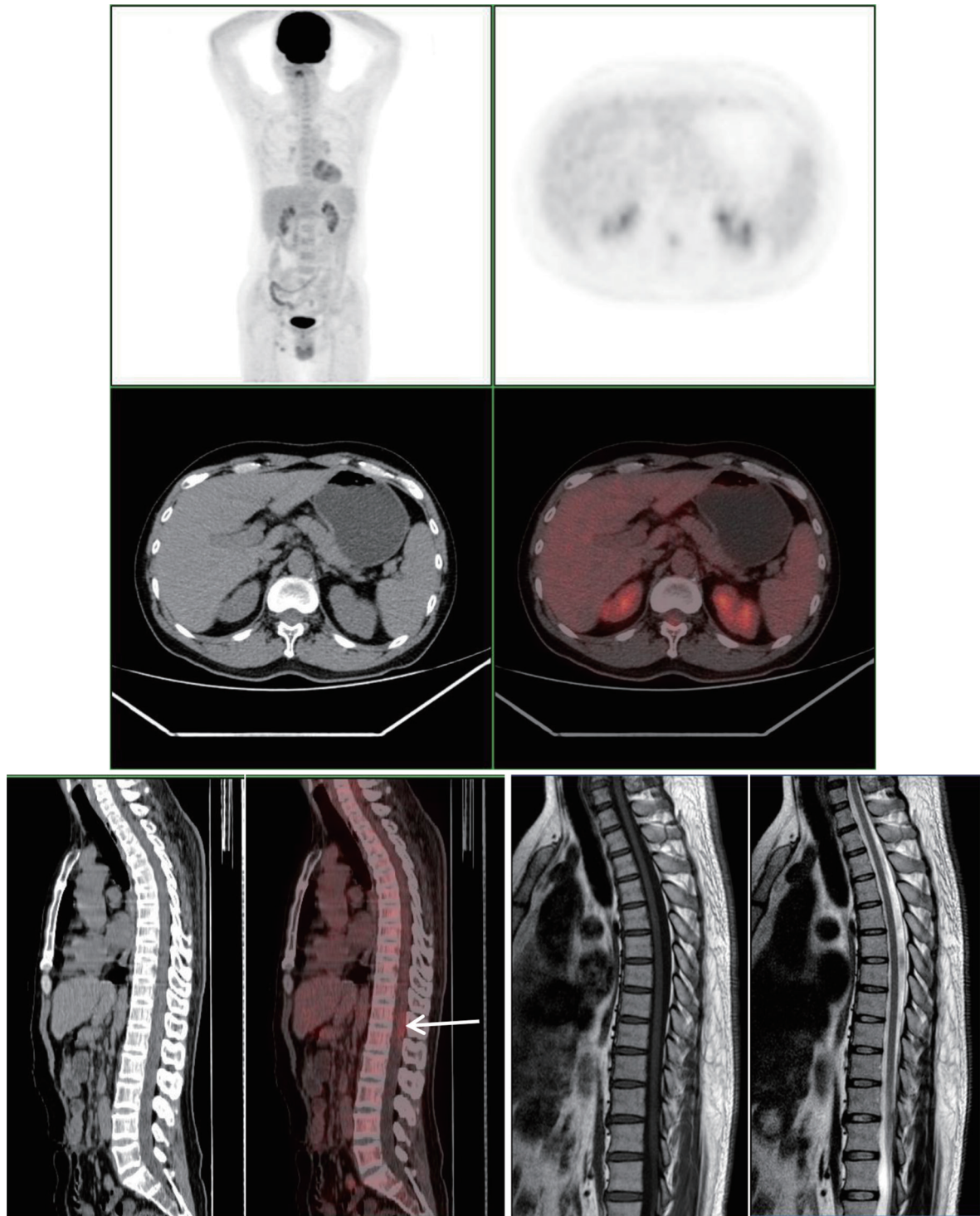


Figure S1 ^{18}F -FDG PET/CT images of a 46-year-old patient after rectal cancer surgery showing focal FDG uptake intra spinal (T12 level, SUVmax 2.0). Subsequent MRI and 6-month follow-up confirmed no spinal cord metastasis. White arrow: probable metastatic lesions were considered on PET/CT. ^{18}F -FDG, ^{18}F -fluorodeoxyglucose; PET, positron emission tomography; CT, computed tomography; SUVmax, maximum standardized uptake value; MRI, magnetic resonance imaging.