

Figure S1 Flow chart for patient recruitment.

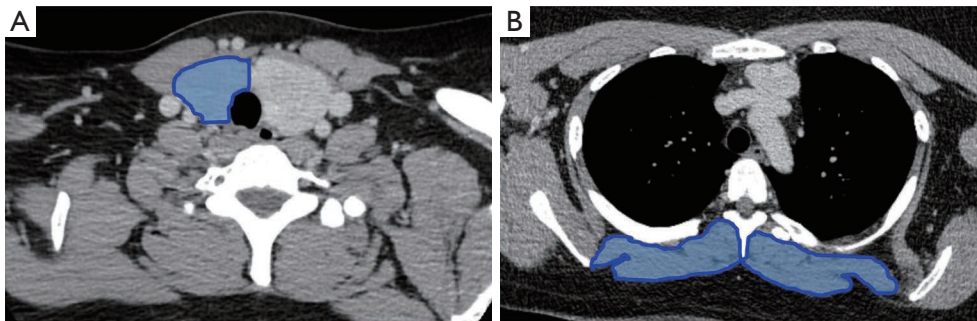


Figure S2 (A) RTV was measured as maximum area of the remnant lobe with the center of the thyroid as the planned resection line (area enclosed by blue line). (B) SMA was evaluated as the cross-sectional area of the surrounding muscles (i.e., paraspinal, rhomboid, and trapezius) at the fourth thoracic vertebral level (area enclosed by blue line).

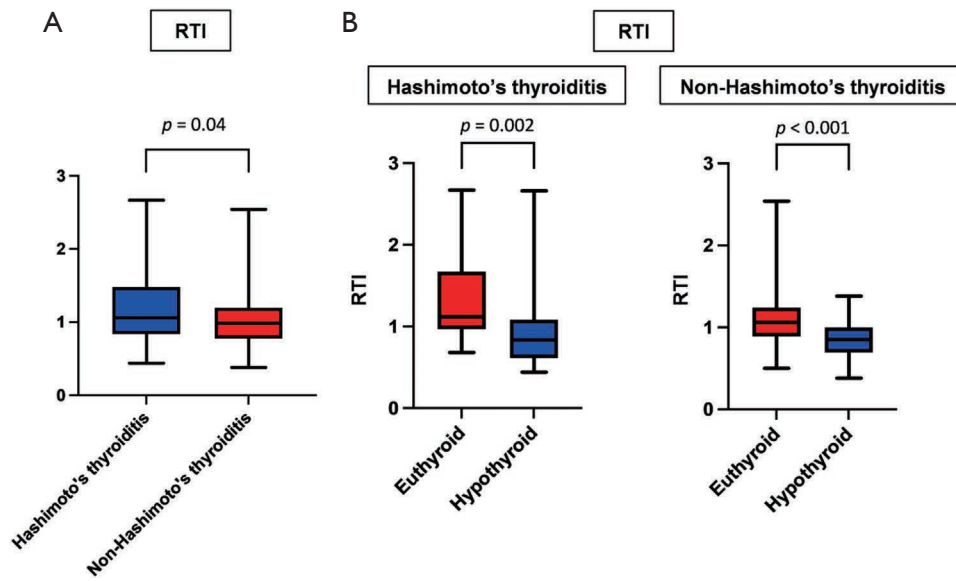


Figure S3 (A) Box-and-whisker plot for RTI in the patients with Hashimoto's thyroiditis (Hashimoto's thyroiditis) and those without Hashimoto's thyroiditis (Non-Hashimoto's thyroiditis). (B) Box-and-whisker plot for RTI comparing the euthyroid group to the hypothyroid group in the Hashimoto's thyroiditis group (left) and the Non-Hashimoto's thyroiditis group (right).

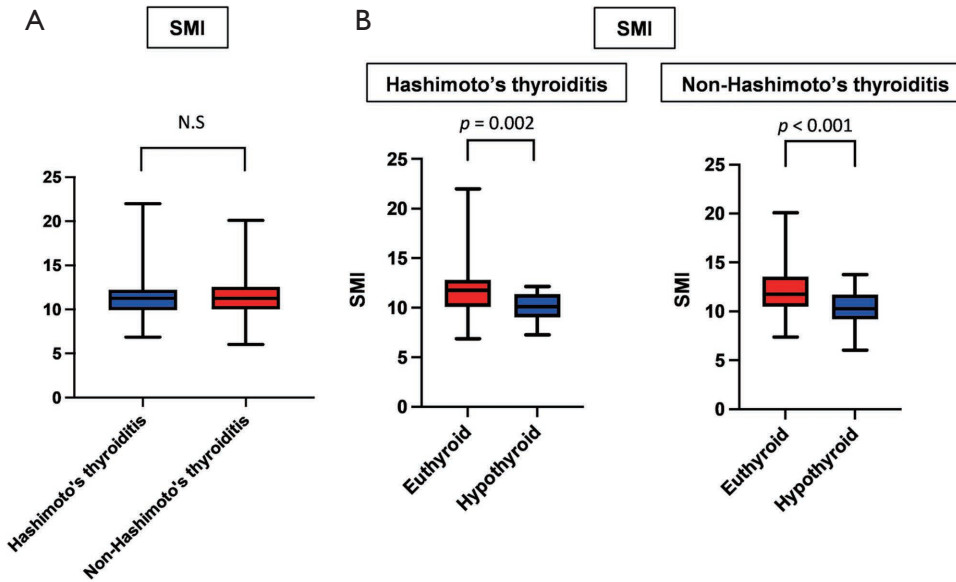


Figure S4 (A) Box-and-whisker plot for SMI in the patients with Hashimoto's thyroiditis (Hashimoto's thyroiditis) and those without Hashimoto's thyroiditis (Non-Hashimoto's thyroiditis). (B) Box-and-whisker plot for SMI comparing the euthyroid group to the hypothyroid group in the Hashimoto's thyroiditis group (left) and the Non-Hashimoto's thyroiditis group (right).