

Figure S1 The coil configuration of each stack.

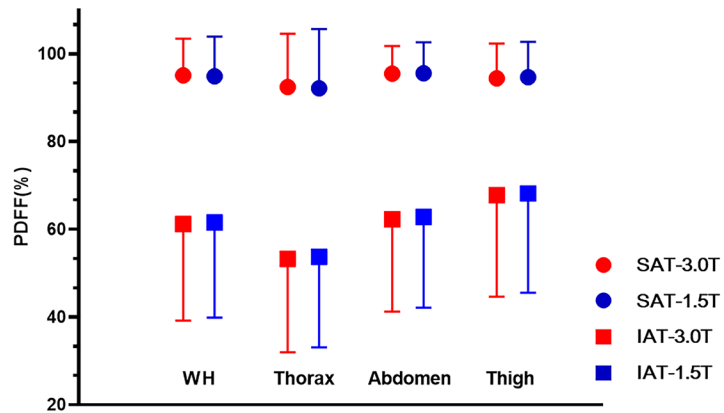


Figure S2 The mean and SD of PDFFF values of SAT and IAT for 1.5 and 3.0 T. PDFFF, proton density fat fraction; WH, whole body; SAT, subcutaneous adipose tissue; IAT, internal adipose tissue; SD, standard deviation.

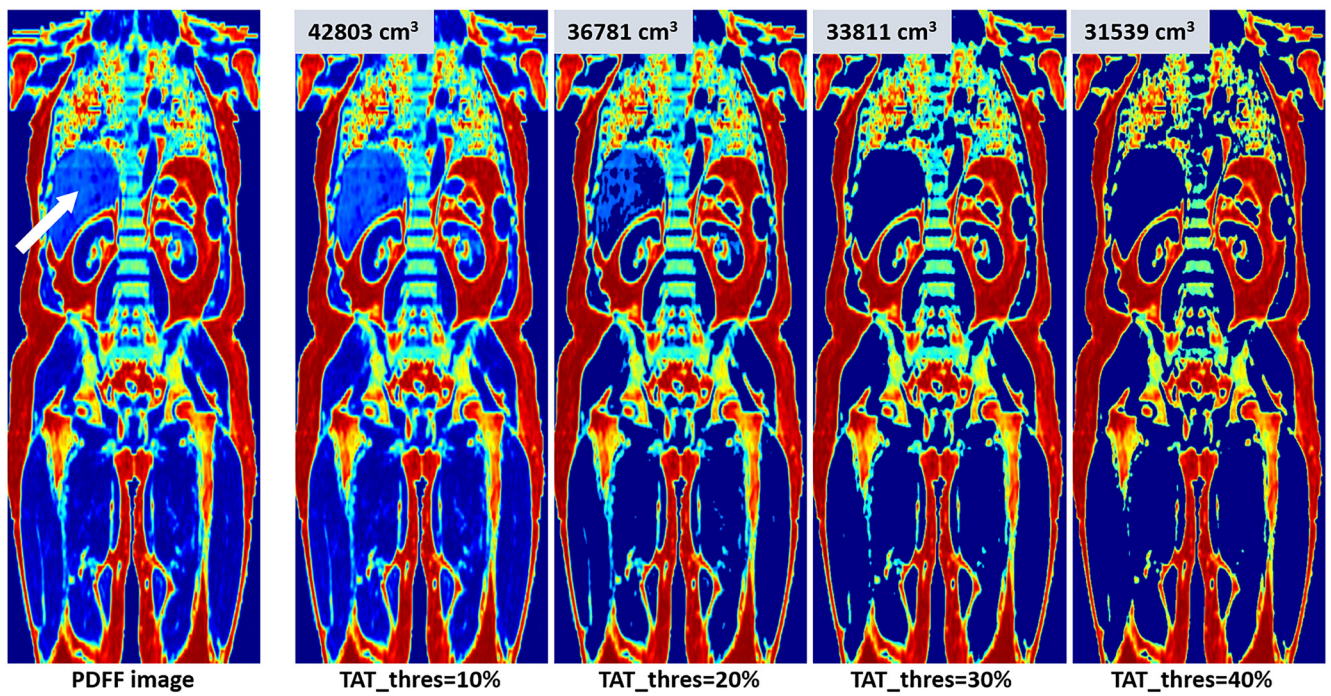


Figure S3 PDFF images of one subject with different threshold. The adipose tissue volume is shown in the upper left corner of the sub-image. White arrow, hepatic fat. PDFF, proton density fat fraction; TAT, total adipose tissue; thres, threshold.