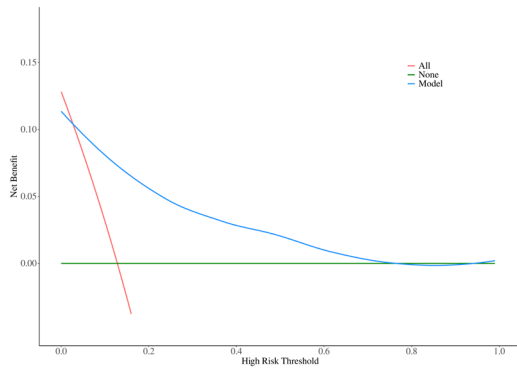


**Figure S1** Kaplan-Meier curve for overall survival of FL patients in the POD24 and non-POD24 groups. POD24, progression of disease within 2 years; FL, follicular lymphoma.

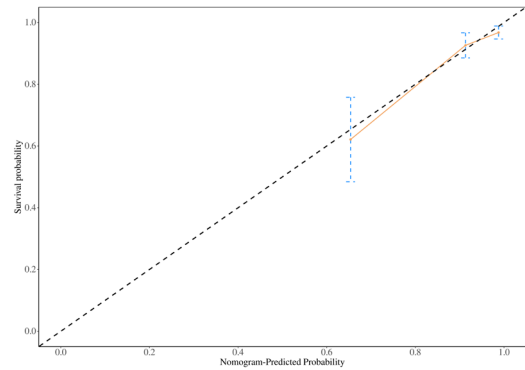
**Table S1** The model performance for POD24 between the new grading system and existing prognostic indexes

Models	C-index	LCL	UCL
FLIPI	0.75	0.66	0.85
FLIPI-2	0.69	0.55	0.83
PRIMA-PI	0.57	0.43	0.71
New model	0.82	0.73	0.91

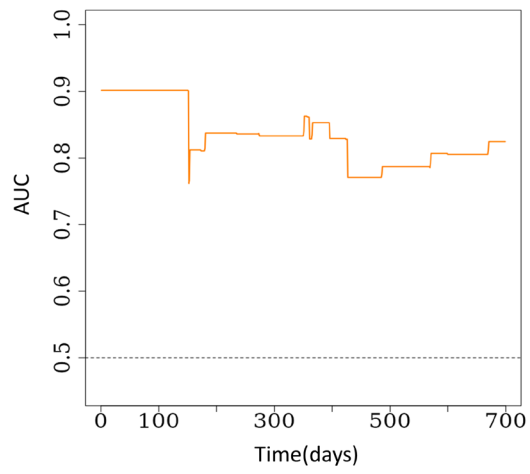
POD24, progression of disease within 2 years; C-index, concordance index; LCL, lower confidence limit; UCL, upper confidence limit; FLIPI, Follicular Lymphoma International Prognostic Index; PRIMA-PI, PRIMA-prognostic index.



**Figure S2** DCA of the new model. DCA, decision curve analysis.



**Figure S3** The calibration curves for the nomogram at 2 years in FL cohort. FL, follicular lymphoma.



**Figure S4** Time-dependent ROC curve of the new predictive model. AUC, area under the curve; ROC, receiver operating characteristic.