

Video S1 The dynamic images observed on the workstation demonstrate changes over time. The first part illustrates the variation in projected lung area, while the latter part depicts diaphragmatic motion. The light blue line indicates the apex of the right lung, the yellow line indicates the apex of the left lung, the purple line indicates the peak of the right diaphragm, and the green line indicates the peak of the left diaphragm.

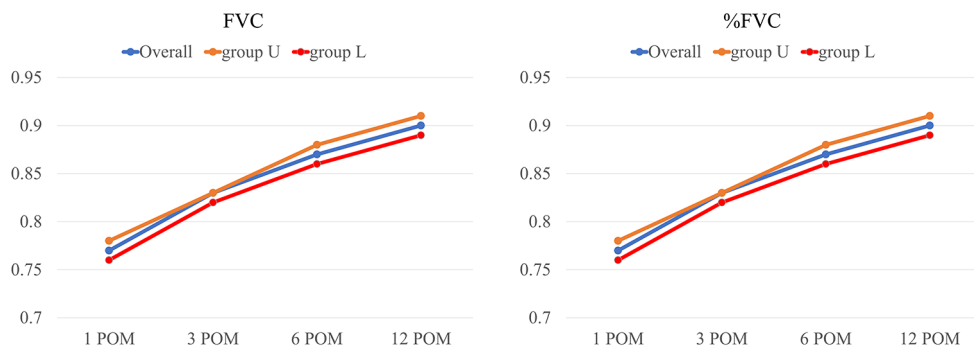


Figure S1 Postoperative changes in the forced vital capacity (FVC) and %FVC values (ratio to preoperative).

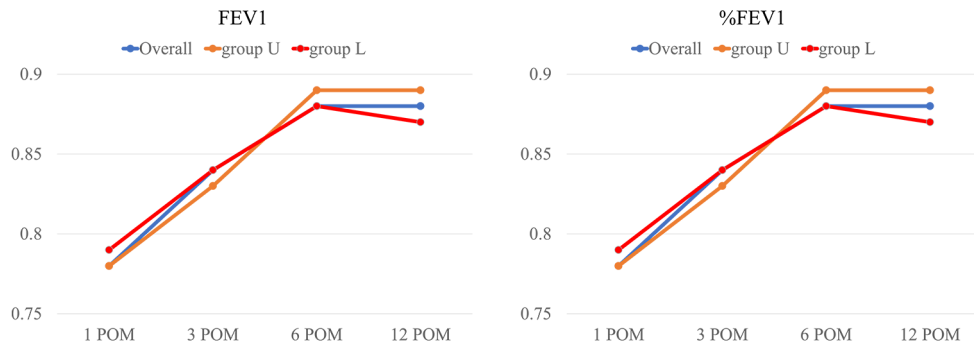


Figure S2 Postoperative changes in the forced expiratory volume in one second (FEV1) and %FEV values (ratio to preoperative).

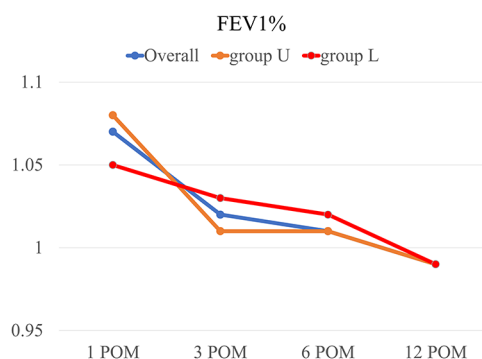


Figure S3 Postoperative changes in the forced expiratory volume in one second percentage (FEV1%) values (ratio to preoperative).

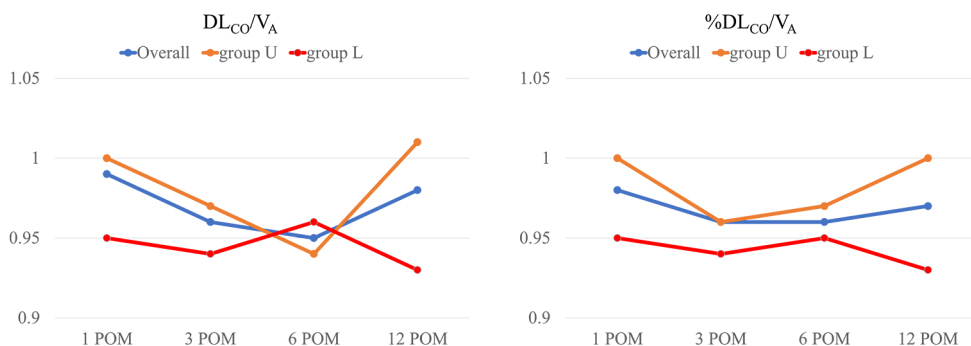


Figure S4 Postoperative changes in the diffusing capacity of the lungs for carbon monoxide (DL_{CO}) and %DL_{CO} values (ratio to preoperative).

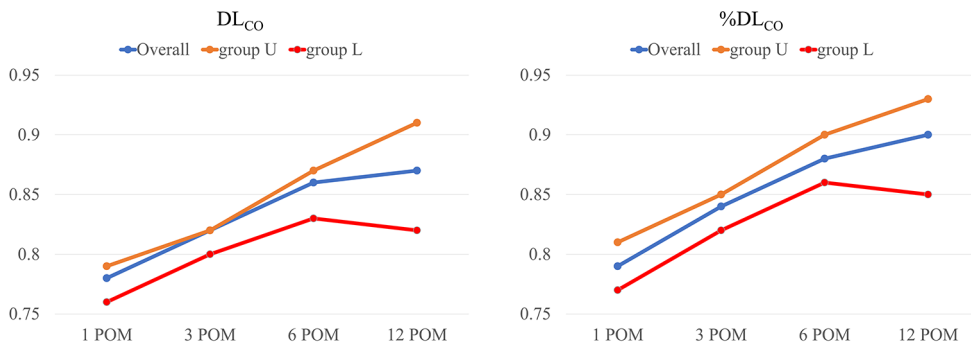


Figure S5 Postoperative changes in the diffusing capacity of the lungs for carbon monoxide divided by the alveolar volume (DL_{CO}/V_A) and %DL_{CO}/V_A values (ratio to preoperative).

Table S1 Preoperative values of dynamic chest radiography

Variable	Mean ± SD (range)		P value
	Left	Right	
Projected lung areas (mm ²)			
Max	16753.3±3242.6 (10712.3–24043.5)	20207.4±3705.6 (13698.8–28224.8)	<0.01
Min	12367.9±2855.9 (7902.8–21187.8)	14590.9±3377.9 (8449.3–22973.4)	<0.01
Excursion of diaphragm (mm)	42.1±12.1 (12.4–72.0)	38.7±12.9 (16.8–66.4)	0.08

Table S2 Postoperative changes in pulmonary function test values in all patients (ratio to preoperative)

Variable	Mean ± SD (range)			
	1 POM	3 POM	6 POM	12 POM
VC	0.77±0.09 (0.53–0.96)	0.83±0.10 (0.46–1.03)	0.87±0.10 (0.49–1.05)	0.89±0.11 (0.54–1.09)
%VC	0.78±0.09 (0.53–0.97)	0.83±0.10 (0.46–1.03)	0.88±0.10 (0.50–1.07)	0.91±0.11 (0.56–1.09)
FVC	0.77±0.08 (0.54–0.95)	0.83±0.10 (0.40–1.02)	0.87±0.10 (0.51–1.06)	0.90±0.11 (0.56–1.09)
%FVC	0.78±0.09 (0.54–0.95)	0.83±0.10 (0.41–1.02)	0.88±0.10 (0.51–1.08)	0.91±0.11 (0.57–1.11)
FEV ₁	0.78±0.09 (0.50–0.99)	0.84±0.10 (0.49–1.02)	0.88±0.10 (0.61–1.18)	0.88±0.11 (0.64–1.17)
%FEV ₁	0.79±0.11 (0.50–1.17)	0.85±0.11 (0.50–1.19)	0.89±0.11 (0.62–1.26)	0.90±0.12 (0.65–1.24)
FEV ₁ %	1.07±0.16 (0.72–1.48)	1.02±0.11 (0.82–1.33)	1.01±0.11 (0.79–1.35)	0.99±0.11 (0.77–1.41)
DL _{CO}	0.78±0.11 (0.47–1.06)	0.82±0.14 (0.18–1.06)	0.86±0.12 (0.38–1.08)	0.87±0.13 (0.40–1.20)
%DL _{CO}	0.79±0.11 (0.58–1.13)	0.84±0.13 (0.22–1.15)	0.88±0.12 (0.39–1.08)	0.90±0.12 (0.48–1.21)
DL _{CO} /V _A	0.98±0.13 (0.56–1.38)	0.96±0.15 (0.28–1.25)	0.96±0.13 (0.53–1.22)	0.97±0.13 (0.61–1.35)
%DL _{CO} /V _A	0.99±0.12 (0.56–1.38)	0.96±0.15 (0.29–1.25)	0.95±0.17 (0.11–1.22)	0.98±0.14 (0.61–1.36)

Table S3 Postoperative changes in pulmonary function test values (ratio to preoperative)

Variable	Mean ± SD (range)			
	1 POM	3 POM	6 POM	12 POM
Group U				
VC	0.78±0.09 (0.53–0.96)	0.83±0.11 (0.46–1.03)	0.87±0.11 (0.49–1.05)	0.90±0.12 (0.54–1.09)
%VC	0.78±0.09 (0.53–0.97)	0.84±0.12 (0.46–1.03)	0.88±0.11 (0.50–1.07)	0.91±0.12 (0.55–1.11)
FVC	0.78±0.08 (0.54–0.95)	0.83±0.12 (0.40–1.02)	0.88±0.11 (0.51–1.06)	0.91±0.12 (0.56–1.09)
%FVC	0.78±0.08 (0.54–0.95)	0.84±0.12 (0.41–1.02)	0.89±0.11 (0.51–1.08)	0.92±0.12 (0.57–1.11)
FEV ₁	0.78±0.09 (0.60–0.97)	0.83±0.11 (0.49–1.03)	0.89±0.11 (0.61–1.18)	0.89±0.11 (0.64–1.17)
%FEV ₁	0.79±0.09 (0.61–0.99)	0.84±0.12 (0.50–1.04)	0.89±0.11 (0.62–1.20)	0.91±0.12 (0.65–1.20)
FEV ₁ %	1.08±0.14 (0.78–1.32)	1.01±0.12 (0.82–1.30)	1.01±0.12 (0.79–1.35)	0.99±0.12 (0.77–1.41)
DL _{CO}	0.79±0.12 (0.56–1.06)	0.82±0.15 (0.18–1.06)	0.87±0.13 (0.38–1.08)	0.91±0.13 (0.40–1.20)
%DL _{CO}	0.81±0.12 (0.58–1.13)	0.85±0.15 (0.22–1.15)	0.90±0.13 (0.39–1.08)	0.93±0.13 (0.48–1.21)
DL _{CO} /V _A	1.00±0.13 (0.74–1.38)	0.96±0.16 (0.28–1.25)	0.97±0.13 (0.53–1.22)	1.00±0.14 (0.61–1.35)
%DL _{CO} /V _A	1.00±0.12 (0.80–1.38)	0.97±0.17 (0.29–1.25)	0.94±0.20 (0.11–1.22)	1.01±0.14 (0.61–1.36)
Group L				
VC	0.76±0.09 (0.54–0.90)	0.82±0.06 (0.70–0.94)	0.86±0.07 (0.73–0.99)	0.89±0.07 (0.75–1.00)
%VC	0.77±0.09 (0.54–0.92)	0.82±0.07 (0.71–0.94)	0.87±0.08 (0.73–0.99)	0.90±0.08 (0.75–1.01)
FVC	0.76±0.09 (0.57–0.89)	0.82±0.06 (0.72–0.93)	0.86±0.08 (0.71–0.97)	0.89±0.07 (0.77–0.99)
%FVC	0.77±0.09 (0.56–0.91)	0.82±0.06 (0.73–0.93)	0.87±0.08 (0.71–0.98)	0.90±0.08 (0.77–1.00)
FEV ₁	0.79±0.10 (0.50–0.99)	0.84±0.07 (0.68–0.97)	0.88±0.09 (0.69–1.00)	0.87±0.09 (0.71–1.04)
%FEV ₁	0.80±0.13 (0.50–1.17)	0.86±0.10 (0.69–1.19)	0.90±0.12 (0.70–1.26)	0.90±0.12 (0.72–1.24)
FEV ₁ %	1.05±0.19 (0.72–1.48)	1.03±0.10 (0.90–1.33)	1.02±0.10 (0.91–1.33)	0.99±0.09 (0.87–1.29)
DL _{CO}	0.76±0.10 (0.47–0.90)	0.80±0.10 (0.58–0.95)	0.83±0.10 (0.66–1.04)	0.82±0.10 (0.58–0.97)
%DL _{CO}	0.77±0.09 (0.58–0.90)	0.82±0.09 (0.68–1.01)	0.86±0.09 (0.70–1.05)	0.85±0.10 (0.58–1.00)
DL _{CO} /V _A	0.95±0.13 (0.56–1.19)	0.94±0.13 (0.65–1.20)	0.95±0.13 (0.71–1.18)	0.93±0.13 (0.63–1.19)
%DL _{CO} /V _A	0.95±0.14 (0.56–1.19)	0.94±0.14 (0.65–1.20)	0.96±0.13 (0.71–1.19)	0.93±0.14 (0.63–1.20)

Table S4 Postoperative changes in projected lung areas (ratio to preoperative)

Variable		Mean ± SD (range)			
		1 POM	3 POM	6 POM	12 POM
Group U					
Max	Affected side	0.68±0.11 (0.38–0.86)	0.73±0.11 (0.38–0.91)	0.77±0.10 (0.52–0.94)	0.79±0.12 (0.51–1.00)
	Unaffected side	1.00±0.06 (0.84–1.13)	1.02±0.06 (0.85–1.14)	1.03±0.07 (0.80–1.18)	1.03±0.09 (0.81–1.23)
Min	Affected side	0.73±0.13 (0.39–0.93)	0.75±0.12 (0.40–0.91)	0.79±0.12 (0.49–1.03)	0.79±0.11 (0.55–1.05)
	Unaffected side	0.98±0.09 (0.79–1.17)	0.99±0.08 (0.82–1.20)	0.98±0.09 (0.74–1.27)	0.98±0.10 (0.74–1.25)
Group L					
Max	Affected side	0.69±0.07 (0.54–0.84)	0.74±0.07 (0.60–0.86)	0.76±0.08 (0.55–0.86)	0.78±0.06 (0.68–0.90)
	Unaffected side	1.02±0.06 (0.88–1.15)	1.05±0.04 (0.98–1.13)	1.04±0.09 (0.72–1.14)	1.05±0.07 (0.91–1.14)
Min	Affected side	0.69±0.09 (0.54–0.83)	0.77±0.09 (0.63–0.93)	0.76±0.12 (0.51–1.03)	0.77±0.11 (0.56–0.89)
	Unaffected side	0.92±0.12 (0.60–1.09)	0.98±0.08 (0.82–1.14)	0.97±0.14 (0.65–1.17)	0.96±0.13 (0.79–1.19)

Table S5 Postoperative changes in excursion of diaphragm (ratio to preoperative)

Variable		Mean ± SD (range)			
		1 POM	3 POM	6 POM	12 POM
Group U					
	Affected side	0.72±0.29 (0.19–1.50)	0.81±0.36 (0.19–1.74)	0.86±0.31 (0.39–1.54)	0.94±0.34 (0.18–1.60)
	Unaffected side	1.09±0.31 (0.77–2.24)	1.10±0.28 (0.71–2.11)	1.11±0.24 (0.49–1.60)	1.15±0.37 (0.52–2.58)
Group L					
	Affected side	0.99±0.43 (0.35–2.09)	0.90±0.50 (0.19–2.40)	0.95±0.34 (0.46–1.75)	0.92±0.34 (0.20–1.80)
	Unaffected side	1.33±0.42 (0.71–2.34)	1.34±0.42 (0.82–2.26)	1.26±0.48 (0.64–2.19)	1.38±0.46 (0.66–2.19)

Table S6 Main results of correlation between pulmonary function test results and dynamic chest radiography

	Group	Affected/unaffected side	Period (POM)	Pulmonary function tests (correlation coefficient)
Projected lung area (max)	U	Affected side	1	VC (0.72), %VC (0.72), FVC (0.77), %FVC (0.75), FEV ₁ (0.56), %FEV ₁ (0.56), FEV1% (0.52), DL _{CO} (0.51), %DL _{CO} (0.51)
			3	VC (0.70), %VC (0.70), FVC (0.70), %FVC (0.67), FEV ₁ (0.55), %FEV ₁ (0.54), %DL _{CO} (0.42)
			6	VC (0.65), %VC (0.64), FVC (0.64), %FVC (0.64), FEV ₁ (0.54), %FEV ₁ (0.52)
			12	VC (0.60), %VC (0.57), FVC (0.60), %FVC (0.56), FEV ₁ (0.52), %FEV ₁ (0.51)
	L	Affected side	1	FEV1 (0.45), %FEV1 (0.44)
			3	%VC (0.43), FVC (0.45), %FVC (0.44), FEV ₁ (0.43), %FEV ₁ (0.45), DL _{CO} /V _A (-0.48), %DL _{CO} /V _A (-0.54)
			6	VC (0.43), FEV ₁ (0.64), %FEV ₁ (0.61)
			12	VC (0.45), %VC (0.48), FVC (0.44), %FVC (0.44), FEV ₁ (0.66), %FEV ₁ (0.68)
Projected lung area (min)	U	Affected side	1	VC (0.56), %VC (0.54), FVC (0.59), %FVC (0.58), FEV ₁ (0.44), %FEV ₁ (0.44), DL _{CO} (0.48), %DL _{CO} (0.49)
			3	FEV ₁ (0.43), %FEV ₁ (0.42), DL _{CO} (0.40), %DL _{CO} (0.41)
			6	VC (0.44), %VC (0.41), FVC (0.43), %FVC (0.42), FEV ₁ (0.50), %FEV ₁ (0.46)
			12	VC (0.41), FVC (0.44), %FVC (0.45), FEV ₁ (0.44), %FEV ₁ (0.44)
	L	Affected side	6	FEV1 (0.45), %FEV1 (0.42)
			1	VC (0.55), %VC (0.57), FVC (0.64), %FVC (0.61), FEV ₁ (0.61), %FEV ₁ (0.63)
			3	VC (0.55), %VC (0.56), FVC (0.47), %FVC (0.49), FEV ₁ (0.61), %FEV ₁ (0.59)
			6	VC (0.44), %VC (0.45), FEV ₁ (0.65), %FEV ₁ (0.54)
L	Unaffected side	1	VC (0.48), %VC (0.49), FVC (0.52), %FVC (0.51), FEV ₁ (0.47), %FEV ₁ (0.47)	
		1	VC (0.55), %VC (0.53), FVC (0.58), %FVC (0.55)	
		3	VC (0.62), %VC (0.61), FVC (0.61), %FVC (0.59), FEV1% (-0.43)	
		6	VC (0.51), %VC (0.49), FVC (0.50), %FVC (0.49), FEV1% (-0.43)	
L	Affected side	12	VC (0.50), %VC (0.48), FVC (0.48), %FVC (0.47)	
		12	VC (0.58), %VC (0.58), FVC (0.60), %FVC (0.64)	

Table S7 Correlation between pulmonary function test results and projected lung areas (max)

Variable	Affected side								Unaffected side							
	1 POM		3 POM		6 POM		12 POM		1 POM		3 POM		6 POM		12 POM	
	r	P value	r	P value	r	P value	r	P value	r	P value	r	P value	r	P value	r	P value
Group U																
VC	0.724	<0.01	0.70	<0.01	0.651	<0.01	0.598	<0.01	0.248	0.13	0.153	0.33	-0.0102	0.952	0.0841	0.60
%VC	0.717	<0.01	0.696	<0.01	0.639	<0.01	0.568	<0.01	0.216	0.19	0.142	0.37	-0.0345	0.84	0.0605	0.71
FVC	0.767	<0.01	0.695	<0.01	0.642	<0.01	0.596	<0.01	0.199	0.23	0.0756	0.63	-0.00624	0.97	0.0758	0.64
%FVC	0.754	<0.01	0.67	<0.01	0.639	<0.01	0.564	<0.01	0.199	0.22	0.0545	0.73	-0.0128	0.94	0.0758	0.64
FEV ₁	0.561	<0.01	0.547	<0.01	0.536	<0.01	0.519	<0.01	0.446	<0.01	0.123	0.44	0.274	0.097	0.279	0.08
%FEV ₁	0.559	<0.01	0.535	<0.01	0.521	<0.01	0.505	<0.01	0.438	<0.01	0.105	0.51	0.243	0.14	0.26	0.10
FEV ₁ %	0.518	<0.01	-0.132	0.40	-0.186	0.26	-0.177	0.27	0.303	0.06	0.0685	0.67	0.111	0.51	0.0373	0.82
DL _{CO}	0.514	<0.01	0.398	0.018	0.271	0.15	0.209	0.24	-0.0586	0.76	-0.243	0.16	0.0585	0.76	0.0735	0.68
%DL _{CO}	0.514	<0.01	0.42	0.013	0.276	0.14	0.154	0.39	-0.0837	0.67	-0.368	0.03	0.104	0.58	0.133	0.46
DL _{CO} /V _A	0.0695	0.72	0.0389	0.82	0.0963	0.61	-0.0876	0.63	-0.433	0.02	-0.274	0.11	0.0487	0.80	0.0601	0.74
%DL _{CO} /V _A	-0.0906	0.66	-0.069	0.71	0.259	0.19	-0.111	0.55	-0.36	0.07	-0.419	0.02	-0.036	0.86	0.0552	0.77
Group L																
VC	0.409	0.06	0.423	0.051	0.434	0.04	0.457	0.06	0.448	0.04	0.0164	0.94	0.0175	0.94	-0.16	0.53
%VC	0.433	0.045	0.399	0.07	0.335	0.13	0.465	0.053	0.483	0.02	-0.00169	0.99	-0.0604	0.79	-0.131	0.60
FVC	0.45	0.036	0.373	0.09	0.365	0.10	0.457	0.06	0.437	0.04	0.0186	0.94	0.0875	0.70	-0.172	0.49
%FVC	0.443	0.04	0.35	0.11	0.335	0.13	0.459	0.06	0.439	0.04	0.0107	0.96	0.0774	0.73	-0.193	0.44
FEV ₁	0.426	0.049	0.637	<0.01	0.61	<0.01	0.412	0.09	0.661	<0.01	0.022	0.92	0.176	0.43	-0.0402	0.88
%FEV ₁	0.446	0.04	0.591	<0.01	0.613	<0.01	0.399	0.10	0.683	<0.01	-0.0367	0.87	0.119	0.60	-0.166	0.51
FEV ₁ %	0.235	0.29	0.132	0.56	0.331	0.13	0.096	0.71	0.405	0.06	-0.0333	0.69	0.112	0.62	0.0691	0.79
DL _{CO}	0.186	0.44	-0.1	0.67	0.104	0.66	-0.0441	0.87	0.165	0.50	0.00519	0.98	0.0842	0.72	-0.299	0.39
%DL _{CO}	0.16	0.53	-0.104	0.65	0.261	0.28	0.0206	0.94	-0.0237	0.93	-0.0545	0.82	0.218	0.37	-0.103	0.71
DL _{CO} /V _A	-0.482	0.04	-0.594	<0.01	-0.218	0.35	0.0676	0.81	-0.198	0.41	0.312	0.17	0.0436	0.86	0.229	0.39
%DL _{CO} /V _A	-0.538	0.02	-0.60	<0.01	-0.232	0.34	0.025	0.93	-0.172	0.49	0.325	0.16	0.0263	0.92	0.325	0.24

Table S8 Correlation between pulmonary function test results and projected lung areas (min)

Variable	Affected side								Unaffected side							
	1 POM		3 POM		6 POM		12 POM		1 POM		3 POM		6 POM		12 POM	
	r	P value	r	P value	r	P value	r	P value	r	P value	r	P value	r	P value	r	P value
Group U																
VC	0.555	<0.01	0.321	0.038	0.442	<0.01	0.414	<0.01	0.119	0.47	-0.284	0.068	0.125	0.45	-0.00801	0.96
%VC	0.535	<0.01	0.308	0.048	0.413	0.01	0.376	0.016	0.089	0.59	-0.301	0.053	0.149	0.37	0.00418	0.98
FVC	0.585	<0.01	0.357	0.02	0.428	<0.01	0.441	<0.01	0.065	0.69	-0.313	0.044	0.109	0.51	-0.00209	0.99
%FVC	0.583	<0.01	0.312	0.045	0.42	<0.01	0.445	<0.01	0.095	0.56	-0.357	0.021	0.116	0.49	-0.00854	0.96
FEV ₁	0.438	<0.01	0.428	<0.01	0.50	<0.01	0.437	<0.01	0.294	0.069	0.0294	0.85	0.448	<0.01	0.246	0.12
%FEV ₁	0.441	<0.01	0.422	<0.01	0.457	<0.01	0.437	<0.01	0.306	0.058	0.000405	0.99	0.419	<0.01	-0.00854	0.96
FEV ₁ %	0.379	0.02	0.141	0.37	-0.103	0.54	-0.152	0.34	0.0164	0.92	0.336	0.03	0.167	0.32	0.0911	0.57
DL _{CO}	0.476	<0.01	0.40	0.033	0.205	0.28	0.102	0.57	-0.0842	0.66	-0.063	0.72	0.128	0.50	-0.202	0.26
%DL _{CO}	0.492	<0.01	0.408	0.016	0.221	0.24	0.051	0.78	-0.0493	0.80	-0.0922	0.60	0.20	0.29	-0.109	0.55
DL _{CO} /V _A	0.133	0.49	0.215	0.21	0.118	0.53	-0.082	0.65	-0.177	0.36	-0.0524	0.76	0.0732	0.70	-0.0444	0.81
%DL _{CO} /V _A	-0.0243	0.91	0.139	0.46	0.219	0.26	-0.098	0.60	-0.155	0.45	-0.0855	0.65	0.233	0.242	-0.048	0.80
Group L																
VC	0.554	<0.01	0.545	<0.01	0.443	0.04	0.321	0.19	0.483	0.02	0.116	0.61	0.191	0.39	-0.0031	0.99
%VC	0.565	<0.01	0.563	<0.01	0.451	0.04	0.325	0.19	0.491	0.02	0.128	0.57	0.187	0.40	0.0299	0.91
FVC	0.641	<0.01	0.474	0.03	0.372	0.09	0.325	0.19	0.524	0.01	0.0344	0.88	0.241	0.28	-0.0526	0.84
%FVC	0.61	<0.01	0.492	0.02	0.345	0.12	0.24	0.34	0.506	0.02	0.0446	0.84	0.23	0.30	-0.098	0.70
FEV ₁	0.605	<0.01	0.607	<0.01	0.654	<0.01	0.271	0.28	0.465	0.03	0.0582	0.80	0.374	0.09	0.0031	0.99
%FEV ₁	0.627	<0.01	0.59	<0.01	0.535	0.01	0.22	0.38	0.471	0.03	0.0536	0.81	0.246	0.27	-0.119	0.64
FEV ₁ %	0.318	0.15	0.0672	0.77	0.289	0.19	0.00103	0.99	0.228	0.31	-0.0423	0.85	0.0909	0.69	0.00722	0.98
DL _{CO}	0.161	0.51	0.129	0.58	0.0241	0.92	0.168	0.53	0.0772	0.75	0.026	0.91	-0.0571	0.81	-0.0735	0.79
%DL _{CO}	0.143	0.57	0.114	0.62	0.0544	0.83	0.153	0.57	0.063	0.81	0.0519	0.82	0.0421	0.87	0.0676	0.81
DL _{CO} /V _A	-0.339	0.16	-0.218	0.34	-0.214	0.36	0.409	0.12	-0.0439	0.86	0.0818	0.72	-0.0692	0.77	0.429	0.10
%DL _{CO} /V _A	-0.315	0.20	-0.22	0.35	-0.216	0.37	0.429	0.11	0.0341	0.86	0.0602	0.80	-0.10	0.68	0.557	0.03

Table S9 Correlation between pulmonary function test results and excursion of diaphragm

Variable	Affected side								Unaffected side							
	1 POM		3 POM		6 POM		12 POM		1 POM		3 POM		6 POM		12 POM	
	r	P value	r	P value	r	P value	r	P value	r	P value	r	P value	r	P value	r	P value
Group U																
VC	0.548	<0.01	0.617	<0.01	0.508	<0.01	0.497	<0.01	0.0191	0.91	0.215	0.17	-0.0846	0.61	0.147	0.36
%VC	0.531	<0.01	0.608	<0.01	0.494	<0.01	0.48	<0.01	0.0338	0.84	0.246	0.12	-0.107	0.52	0.115	0.47
FVC	0.576	<0.01	0.605	<0.01	0.497	<0.01	0.479	<0.01	0.0275	0.87	0.24	0.13	-0.0752	0.65	0.137	0.39
%FVC	0.546	<0.01	0.594	<0.01	0.49	<0.01	0.467	<0.01	0.00506	0.98	0.292	0.06	-0.0684	0.68	0.118	0.46
FEV1	0.0804	0.63	0.236	0.13	-0.00952	0.96	0.199	0.21	-0.0771	0.64	0.0493	0.76	0.0108	0.95	0.0845	0.60
%FEV1	0.0785	0.63	0.219	0.16	0.0275	0.87	0.185	0.25	-0.0656	0.69	0.0691	0.66	-0.0128	0.94	0.0775	0.63
FEV1%	0.284	0.08	-0.429	<0.01	-0.431	<0.01	-0.42	0.01	0.0684	0.68	-0.237	0.13	0.0242	0.89	-0.0852	0.60
DL _{CO}	0.03	0.88	0.0782	0.65	0.0185	0.92	0.337	0.056	0.115	0.55	-0.178	0.31	-0.0447	0.81	0.298	0.09
%DL _{CO}	0.0414	0.83	0.0734	0.67	-0.0256	0.89	0.27	0.13	0.105	0.59	-0.165	0.34	-0.00467	0.98	0.23	0.20
DL _{CO} /V _A	-0.214	0.26	-0.116	0.51	-0.0768	0.69	-0.00568	0.98	0.0788	0.68	-0.26	0.13	-0.0327	0.86	0.0674	0.71
%DL _{CO} /V _A	-0.311	0.12	-0.077	0.68	0.0421	0.84	-0.00887	0.96	-0.0126	0.95	-0.306	0.09	-0.302	0.13	0.0669	0.72
Group L																
VC	0.0503	0.83	0.115	0.61	0.161	0.47	0.575	0.014	-0.312	0.16	-0.394	0.07	-0.0311	0.89	-0.125	0.62
%VC	0.0887	0.69	0.0853	0.71	0.107	0.64	0.575	0.014	-0.319	0.15	-0.429	0.048	-0.0649	0.77	-0.131	0.60
FVC	-0.0356	0.88	0.0988	0.66	0.167	0.46	0.60	<0.01	-0.406	0.06	-0.45	0.04	0.00169	0.99	-0.0712	0.78
%FVC	-0.0446	0.84	0.661	0.77	0.171	0.45	0.637	<0.01	-0.396	0.07	-0.457	0.03	-0.0096	0.97	-0.0258	0.92
FEV1	0.0356	0.88	-0.313	0.16	-0.137	0.54	0.276	0.27	-0.252	0.26	-0.275	0.22	-0.165	0.46	-0.141	0.56
%FEV1	0.0604	0.79	-0.3555	0.11	-0.0757	0.74	0.342	0.17	-0.242	0.28	-0.247	0.27	-0.0683	0.76	-0.00722	0.98
FEV1%	0.195	0.38	-0.185	0.41	0.002	0.99	-0.263	0.29	-0.0774	0.73	0.26	0.24	-0.0209	0.93	0.0423	0.87
DL _{CO}	0.267	0.27	0.134	0.56	0.0135	0.96	0.376	0.15	0.093	0.71	0.0506	0.83	0.0902	0.71	0.112	0.68
%DL _{CO}	0.10	0.69	0.149	0.52	-0.112	0.65	0.276	0.30	0.0155	0.95	0.0688	0.77	0.116	0.64	-0.00882	0.98
DL _{CO} /V _A	0.291	0.23	0.0883	0.70	-0.0406	0.87	-0.159	0.56	-0.00702	0.98	0.151	0.51	-0.0346	0.89	-0.353	0.18
%DL _{CO} /V _A	0.243	0.33	0.135	0.57	-0.0219	0.93	-0.132	0.64	-0.0671	0.79	0.131	0.58	-0.0105	0.97	-0.425	0.12