

Supplementary

Table S1 Interobserver agreement in rated items and PI-RADS scores (rating 1–5)

Item	Kappa
Anterior wall motion	0.73 (0.55 to 0.90)
Anatomical resolution T2	0.72 (0.54 to 0.90)
Motion artifact T2	0.75 (0.59 to 0.91)
Overall image quality on T2	0.63 (0.43 to 0.83)
Susceptibility artifact	0.86 (0.77 to 0.96)
Motion on DCE	0.95 (0.86 to 1.00)
Breathing motion	0.58 (0.45 to 0.71)
T2 maximum PI-RADS score	1.00 (1.00 to 1.00)
DWI maximum PI-RADS score	1.00 (1.00 to 1.00)

Values are shown as estimate (95% confidence interval). DCE, dynamic contrast-enhancement imaging; DWI, diffusion-weighted images; PI-RADS, Prostate Imaging Reporting and Data System; T2, T2-weighted images.



Video S1 Dynamic contrast enhancement sequence shows respiratory motion of the anterior abdominal wall, motion of the rectum, prostate, and bladder.

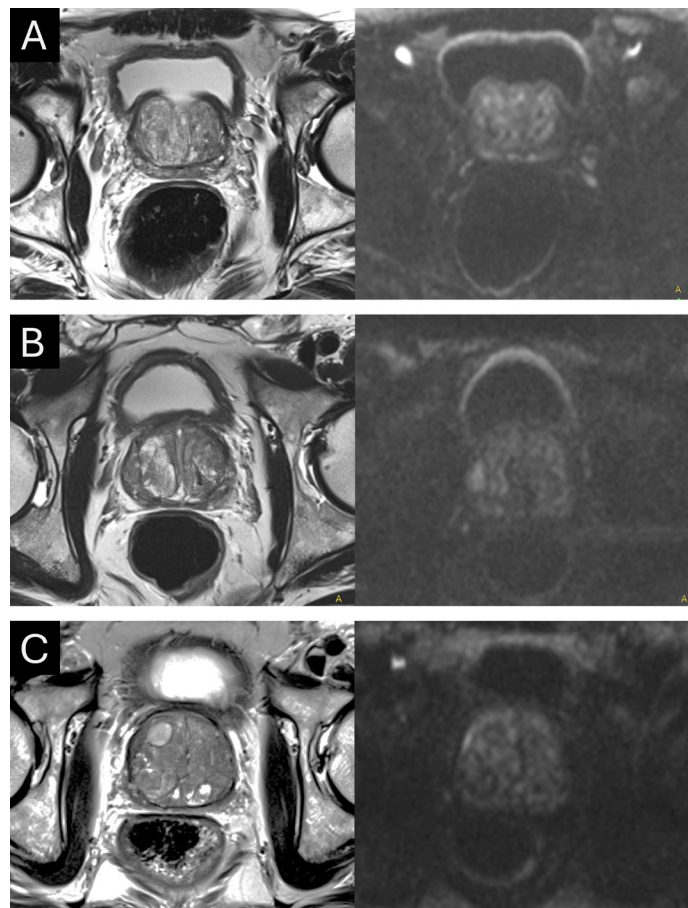


Figure S1 Representative examples from three patients (A-C) demonstrating pronounced rectal distension while maintaining excellent image quality on T2-weighted images (left). The posterior peripheral zone exhibits no susceptibility artifacts on high b-value diffusion-weighted images (right).