

Table S1 Diagnostic performance for differentiating VETC-positive and negative HCCs

Variables	AUC (95% CI)	Sensitivity (%)	Specificity (%)
IAPHC ($\geq 20\%$)	0.672 (0.524–0.798)	61.90	72.41
IC-EP	0.766 (0.625–0.874)	80.95	68.97
Combined model	0.810 (0.675–0.907)	66.67	89.66
AFP	0.645 (0.497–0.775)	42.86	86.21

VETC, vessels encapsulating tumor clusters; IC-EP, iodine concentration in the equilibrium phase; AUC, area under the curve; CI, confidence interval; IAPHC, intratumor arterial phase hypovascular component; AFP, alpha-fetoprotein.

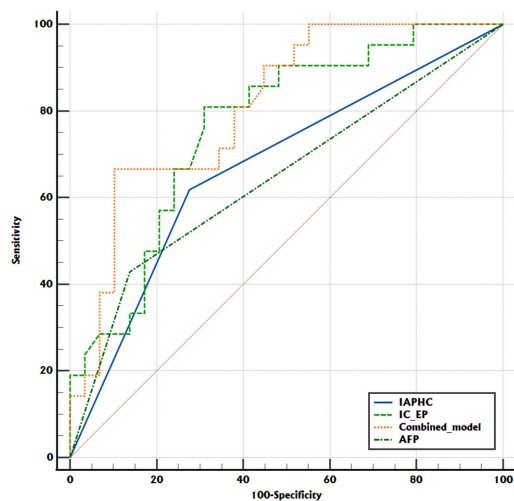


Figure S1 ROC curves of the IAPHC, IC-EP, combined model, and AFP for discriminating VETC pattern. VETC, vessels encapsulating tumor clusters; ROC, receiver operating characteristic; IC-EP, iodine concentration in the equilibrium phase; AFP, alpha-fetoprotein; IAPHC, intratumor arterial phase hypovascular component.