

Figure S1 Histograms of the primary (blue) and metastatic tumors (red) from CT images for Patient 1. X-axis is the value of radiomics features, Y-axis is the value of the corresponding histogram bins. CT, computed tomography.

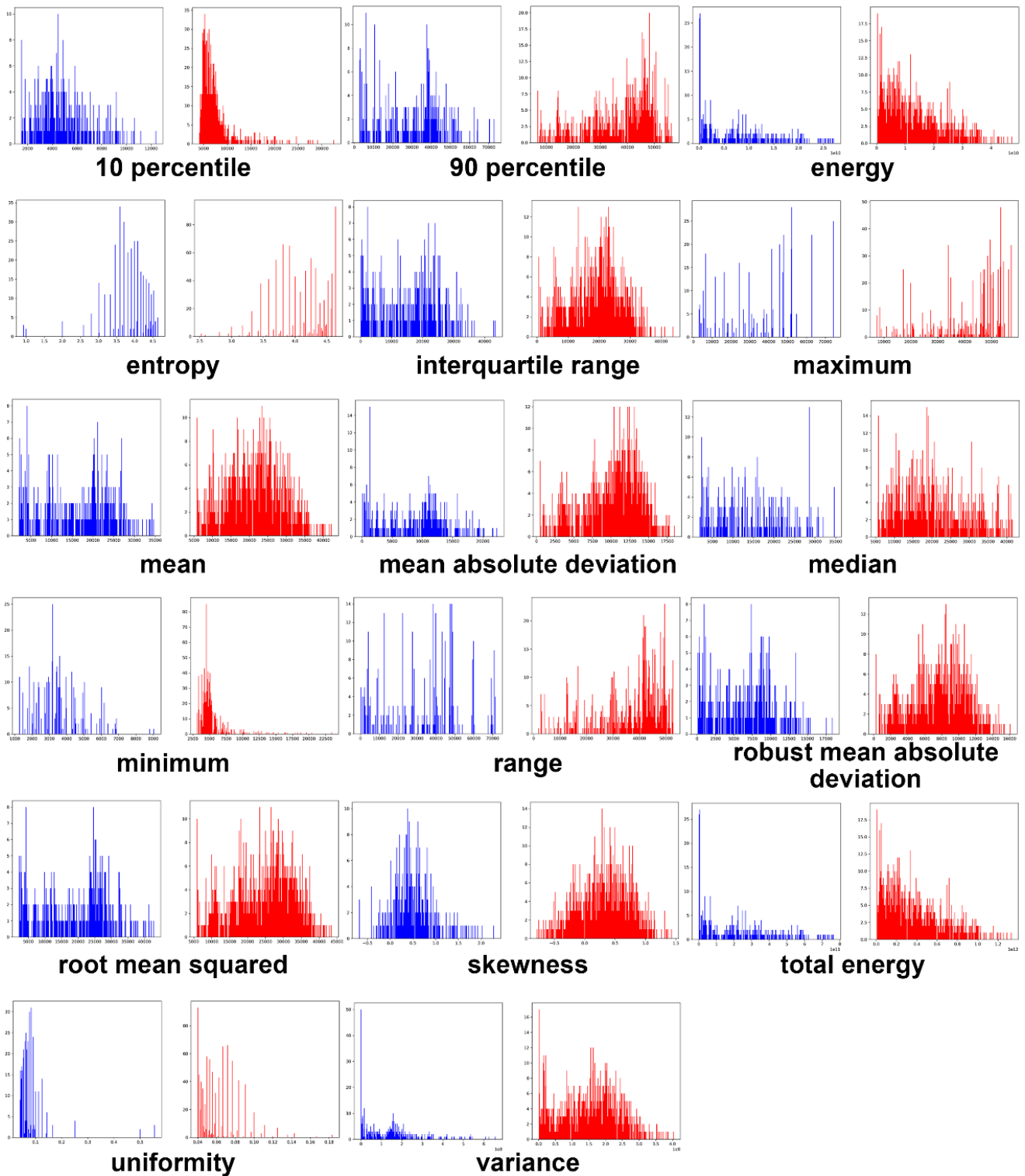


Figure S2 Histograms of the primary (blue) and metastatic tumors (red) from PET images for Patient 1. X-axis is the value of radiomics features, Y-axis is the value of the corresponding histogram bins. PET, positron emission tomography.

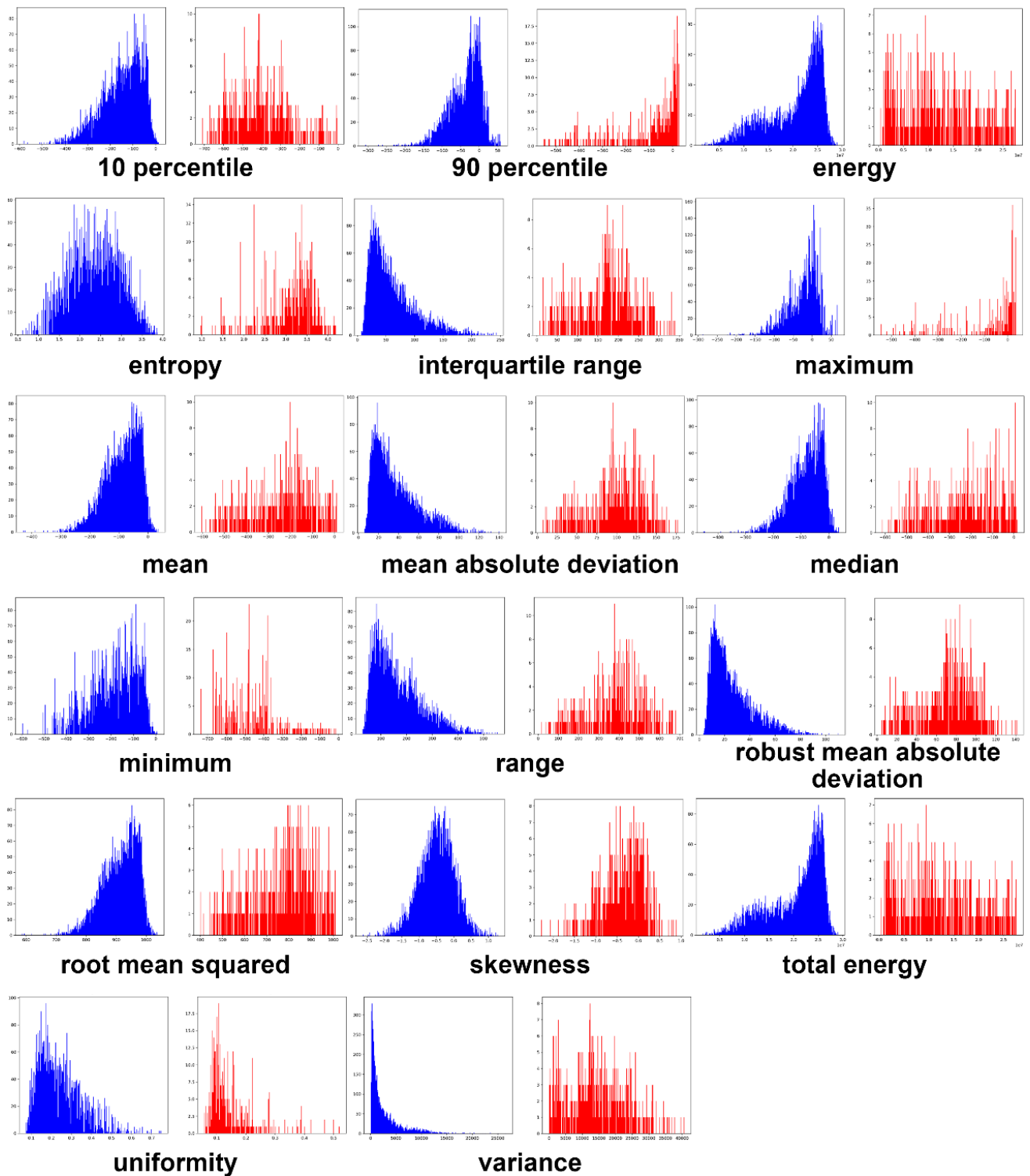


Figure S3 Histograms of the primary (blue) and metastatic tumors (red) from CT images for Patient 2. X-axis is the value of radiomics features, Y-axis is the value of the corresponding histogram bins. CT, computed tomography.

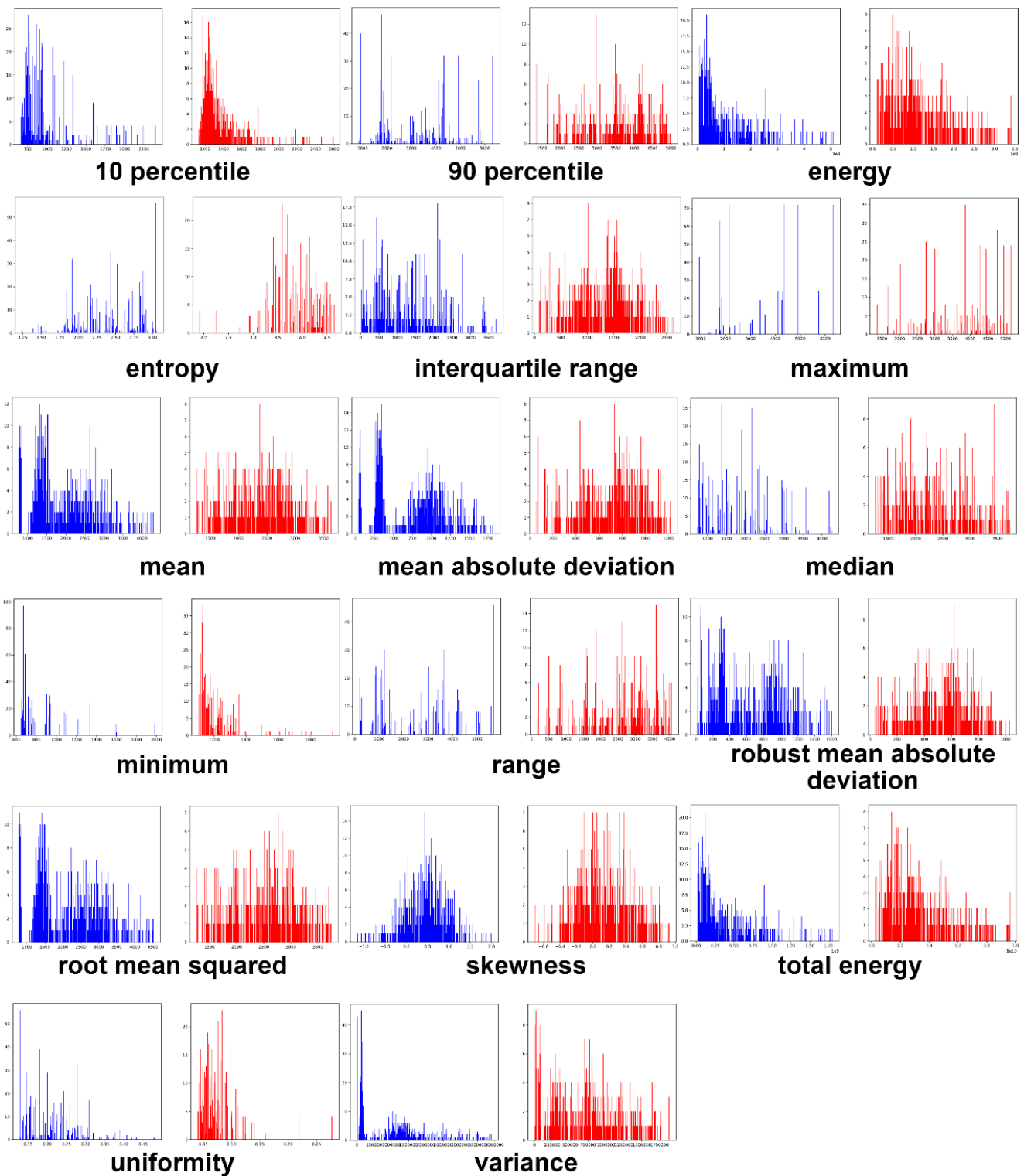


Figure S4 Histograms of the primary (blue) and metastatic tumors (red) from PET images for Patient 2. X-axis is the value of radiomics features, Y-axis is the value of the corresponding histogram bins. PET, positron emission tomography.