

Table S1 Scoring table of thoracic surgeon

Patient number	Image identification scoring table of thoracic surgeon					
	By original CT images			By fused images		
	Coronal plane	Sagittal plane	Axial plane	Coronal plane	Sagittal plane	Axial plane
1				•	•	•
2				•	•	•
3				•	•	
4				•	•	•
5				•	•	•
6				•	•	•
7				•	•	•
8			•	•	•	•
9				•		•
10				•	•	•
11					•	•
12			•	•	•	•
13				•		•
14				•	•	•
15	•		•	•	•	•
16			•	•	•	•
17				•		•
18						•
19			•	•		•
20				•	•	•
21				•	•	•
22				•	•	•
23				•	•	•
24				•		•
25				•	•	•
26			•		•	•
27				•	•	•
28				•	•	•
29				•	•	•
30				•	•	•
31				•	•	•

CT, computed tomography.

Table S2 Scoring table of radiologist

Patient number	Image identification scoring table of radiologist					
	By Original CT Images			By Fused Images		
	Coronal plane	Sagittal plane	Axial plane	Coronal plane	Sagittal plane	Axial plane
1				•	•	•
2				•	•	•
3		•		•	•	•
4				•	•	•
5		•		•	•	•
6		•	•	•	•	•
7			•			•
8			•	•	•	•
9				•		•
10			•	•	•	•
11				•		•
12				•	•	•
13				•		•
14			•	•	•	•
15			•	•	•	•
16			•	•	•	•
17				•		•
18				•		•
19				•		•
20				•	•	•
21				•	•	•
22				•	•	•
23				•	•	•
24	•			•	•	•
25				•		•
26					•	•
27				•	•	•
28				•	•	•
29				•	•	•
30	•			•	•	•
31				•	•	•

CT, computed tomography.

Table S3 Cross-tabulation of identification of the two sets of images by the two doctors

Observer	Radiologist			Total
	1	2	3	
Thoracic surgeon				
1	1	1	0	2
2	0	7	0	7
3	1	0	21	22
Total	2	8	21	31

Table S4 Kappa coefficient for agreement testing of the two doctors

Statistics	Value	Asymptotic standard error	Approximate T	Asymptotic significance
Agreement measurement (Kappa)	0.859	0.091	5.783	<0.001
Number of valid cases	31			

Table S5 Correlation of image quality after fusion with lesion size, location, and CT value

Variables	B	Standard error	Wald	Degrees of freedom	Significance	Exp (B)
Step 1						
GGN site	-0.162	0.468	0.120	1	0.729	0.850
GGN size	-0.522	0.426	1.500	1	0.221	0.593
GGN CT value	0.040	0.015	7.201	1	0.007	1.041
Constant	29.223	11.333	6.649	1	0.010	4914371182713.370
Step 2						
GGN size	-0.572	0.415	1.901	1	0.168	0.565
GGN CT value	0.042	0.015	7.542	1	0.006	1.042
Constant	30.054	11.655	6.650	1	0.010	11284024123492.076
Step 3						
GGN CT value	0.033	0.013	6.919	1	0.009	1.034
Constant	20.345	7.711	6.962	1	0.008	685223389.734

CT, computed tomography; GGN, ground-glass nodule.

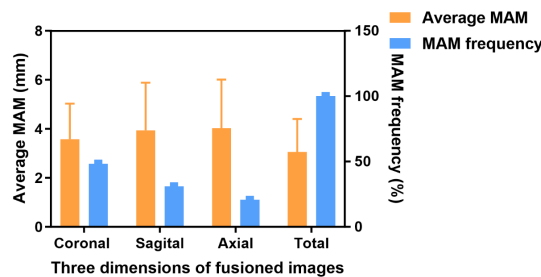


Figure S1 The MAM appeared in the coronal plane, accounting for 48.27% of the total, with an average of 3.60 ± 1.43 mm. The MAM appeared in the sagittal plane, accounting for 31.03% of the total, with an average of 3.94 ± 1.94 mm. The MAM appeared in the axial plane, accounting for 20.69% of the total, with an average of 4.04 ± 1.96 mm. The average of the all MAM of the three dimensions was 3.05 ± 1.35 mm. MAM, minimum ablative margin.