

Figure S1 LASSO regression with 10-fold cross-validation for feature selection. The red dotted line indicates the minimum lambda; the blue dotted line indicates the 1 standard error of the minimum. LASSO, least absolute shrinkage and selection operator.

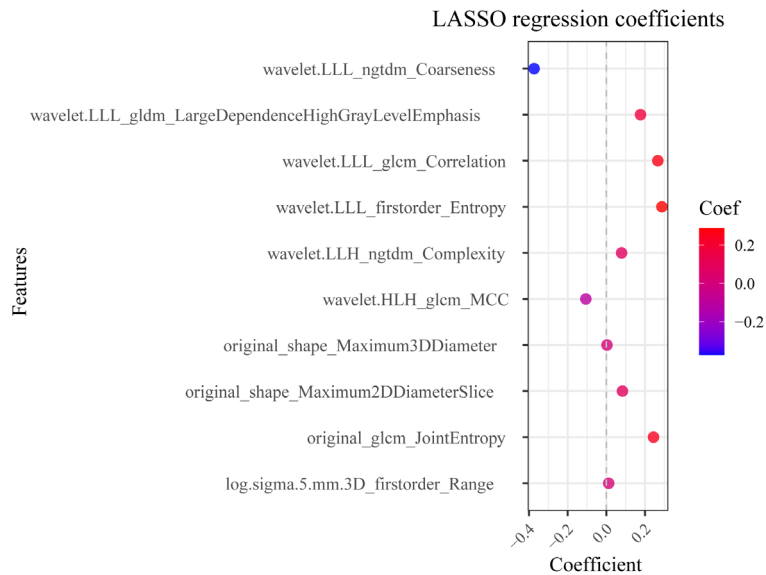


Figure S2 Least absolute shrinkage and selection operator regression with 10-fold cross-validation identified 10 significant radiomics features that could preoperatively predict invasive adenocarcinoma with pulmonary adenocarcinomas presenting as pure ground-glass nodules.

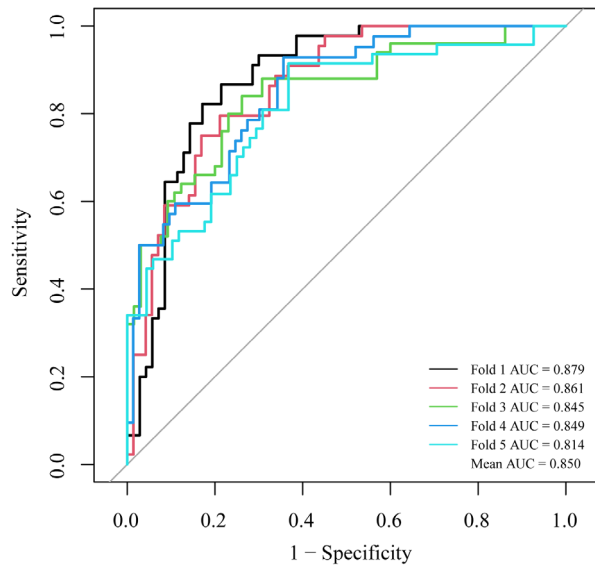


Figure S3 Evaluation of the robustness of radiomics features using five-fold cross-validation. AUC, area under the curve.