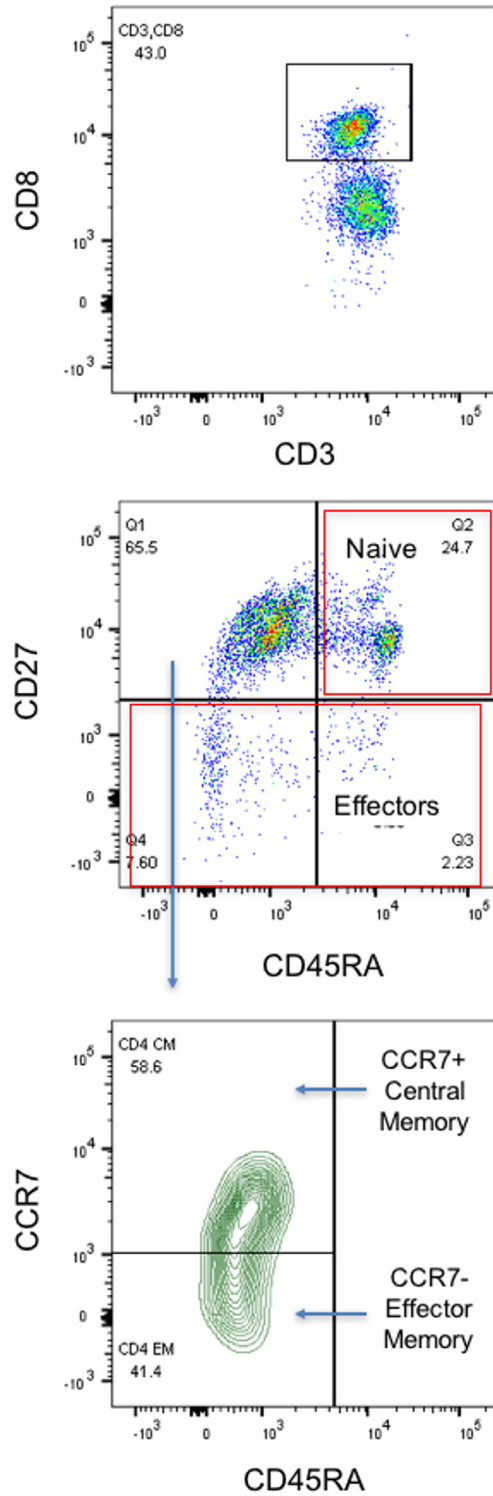


## Effector Memory Gating Strategy



**Figure S1** Gating strategy. CCR7, CC-type chemokine receptor 7; CM, central memory; EM, effector memory.

**Table S1** Median donor chimerism data for CD3 and CD15 at days 28, 84, 175, and 365

Timepoint	MRD (n=48)		MUD (n=61)		Haplo (n=28)	
	CD3 (%)	CD15 (%)	CD3 (%)	CD15 (%)	CD3 (%)	CD15 (%)
Day 28	100	100	80	100	91	95
Day 84	100	98	96	99	97	98
Day 175	99	99	99	98	97	99
Day 365	100	100	100	100	98	99

MRD, matched related donor; MUD, matched unrelated donor.