

Table S1 Association between baseline clinicopathologic characteristics and cumulative mGPS score in the total cohort

	Modified Glasgow Prognostic Score			P value
	0	1	2	
Patients (n) 1510	1081	387	42	
Median age, yr (IQR)	71 (65–78)	70 (65–78)	70 (63.75–79.25)	0.82
Gender, n (%)				0.27
Male	876(81.0)	316 (81.7)	30 (71.4)	
Female	205 (19.0)	71 (18.3)	12 (28.6)	
Smoking status, n (%)				<0.01
Never	455 (42.1)	202 (52.2)	16 (38.1)	
Current	306 (28.3)	107 (27.6)	16 (38.1)	
Former	320 (29.6)	78 (20.2)	10 (23.8)	
Median cigarettes per day, n (IQR)	10 (0–15)	10 (0–20)	15 (0–20)	<0.01
Median smoking years, n (IQR)	18 (0–30)	25 (0–35)	25 (0–40)	<0.01
Statin use, n (%)				0.02
Never	773 (71.5)	305 (78.8)	30 (71.4)	
Current	308 (28.5)	82 (21.2)	12 (28.6)	
Multifocal disease, n (%)	449 (41.5)	199 (51.4)	21 (50.0)	<0.01
Tumor size ≥3 cm, n (%)	670 (62.0)	271 (70.0)	26 (63.4)	0.02
Carcinoma in situ, n (%)	169 (15.6)	57 (14.7)	5 (11.9)	0.75
Median ESR, mm/h (IQR)	12 (7–20)	17 (10.15–26)	20.50 (12.75–27)	<0.01
Median CRP, mg/l (IQR)	1.09 (0.4–2.64)	14 (12–17)	14.15 (12.6–17)	<0.01

Table S2 Association between baseline clinicopathologic characteristics and cumulative PNI in the total cohort

	PNI		P value
	<51.55	≥51.55	
Patients (n) 1510	755	755	
Median age, yr (IQR)	72 (65–78)	70 (63–77)	0.001
Gender, n (%)			0.000
Male	578 (76.6)	644 (85.3)	
Female	177 (23.4)	111 (14.7)	
Smoking status, n (%)			0.55
Never	343 (45.4)	330 (43.7)	
Current	205 (27.2)	224 (29.7)	
Former	207 (27.4)	201 (26.6)	
Median cigarettes per day, n (IQR)	10 (0–20)	10 (0–20)	0.16
Median smoking years, n (IQR)	20 (0–31)	20 (0–30)	0.027
Statin use, n (%)			0.007
Never	531 (70.3)	577 (76.4)	
Current	224 (29.7)	178 (23.6)	
Multifocal disease, n (%)	346 (45.8)	323 (42.8)	0.23
Tumor size ≥3 cm, n (%)	490 (65.0)	477 (63.2)	0.46
Carcinoma in situ, n (%)	118 (15.6)	113 (15.0)	0.72
Median ESR, mm/h (IQR)	13 (8–22)	12 (7–20)	0.002
Median CRP, mg/l (IQR)	2 (0.55–11.5)	2.08 (0.8–11)	0.549

Table S3 Association between baseline clinicopathologic characteristics and cumulative SIM score in the total cohort

	SIM				P value
	0	1	2	3	
Patients (n) 1510	150	603	610	140	
Median age, yr (IQR)	73 (65–78)	70 (64–77)	71 (65–78)	70 (67–80)	0.14
Gender, n (%)					0.17
Male	127 (84.7)	483 (80.1)	486 (79.7)	121 (86.4)	
Female	23 (15.3)	120 (19.9)	124 (20.3)	19 (13.6)	
Smoking status, n (%)					0.000
Never	51 (34.0)	242 (40.1)	297 (48.7)	77 (55.0)	
Current	43 (28.7)	165 (27.4)	181 (29.7)	40 (28.6)	
Former	56 (37.3)	196 (32.5)	132 (21.6)	23 (16.4)	
Median cigarettes per day, n (IQR)	10 (0–15)	10 (0–15)	10 (0–20)	12 (0–20)	0.018
Median smoking years, n (IQR)	15 (0–30)	19.50 (0–30)	25 (0–35)	20 (0–35)	0.035
Statin use, n (%)					0.006
Never	119 (79.3)	462 (76.6)	427 (70.0)	94 (67.1)	
Current	31 (20.7)	141 (23.4)	183 (30.0)	46 (32.9)	
Multifocal disease, n (%)	70 (46.7)	231 (38.3)	299 (49.0)	65 (46.4)	0.002
Tumor size \geq 3 cm, n (%)	113 (75.3)	367 (61.0)	398 (65.2)	83 (59.3)	0.006
Carcinoma in situ, n (%)	17 (11.3)	103 (17.1)	83 (13.6)	28 (20.0)	0.07
Median ESR, mm/h (IQR)	8.75 (6–14.25)	12 (7.80–20)	14 (8–24.25)	16 (8–25)	0.000
Median CRP, mg/l (IQR)	2.16 (0.65–12)	1.69 (0.5–9.25)	2.85 (0.7–11.23)	3.17 (1–13.2)	0.000

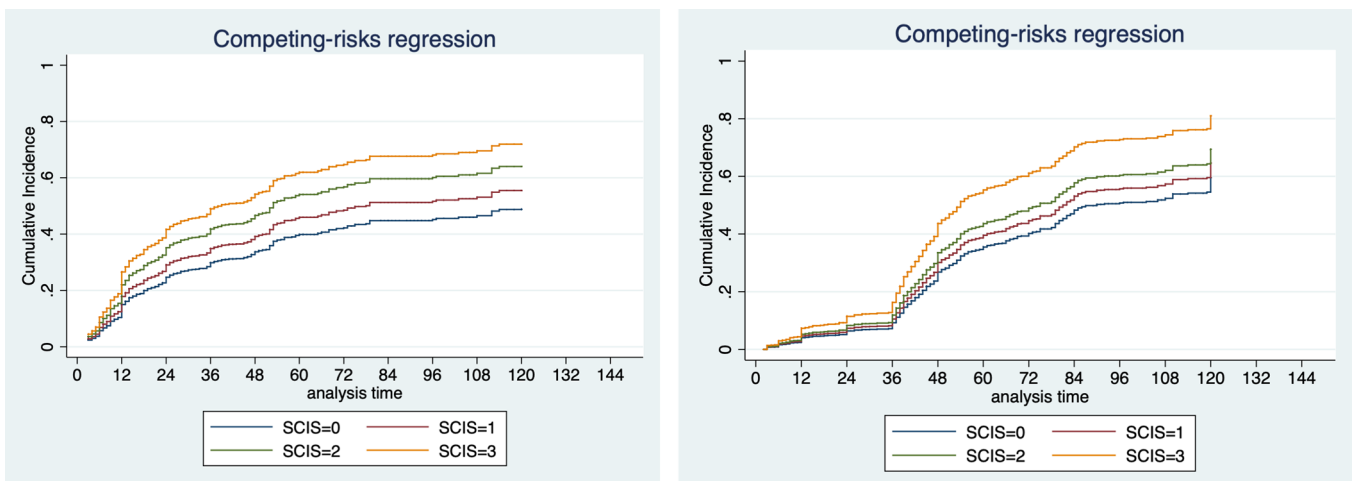


Figure S1 Fine–Gray competing risk analysis of recurrence (a) and progression (b) according to SCIS.

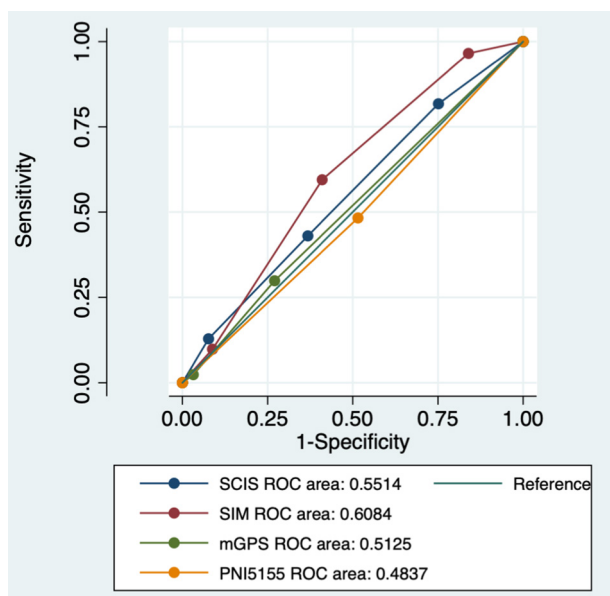


Figure S2 ROC for recurrence prediction for SIM, SCIS, mGPS and PNI.