

Figure S1 Histograms of the propensity scores before and after matching.

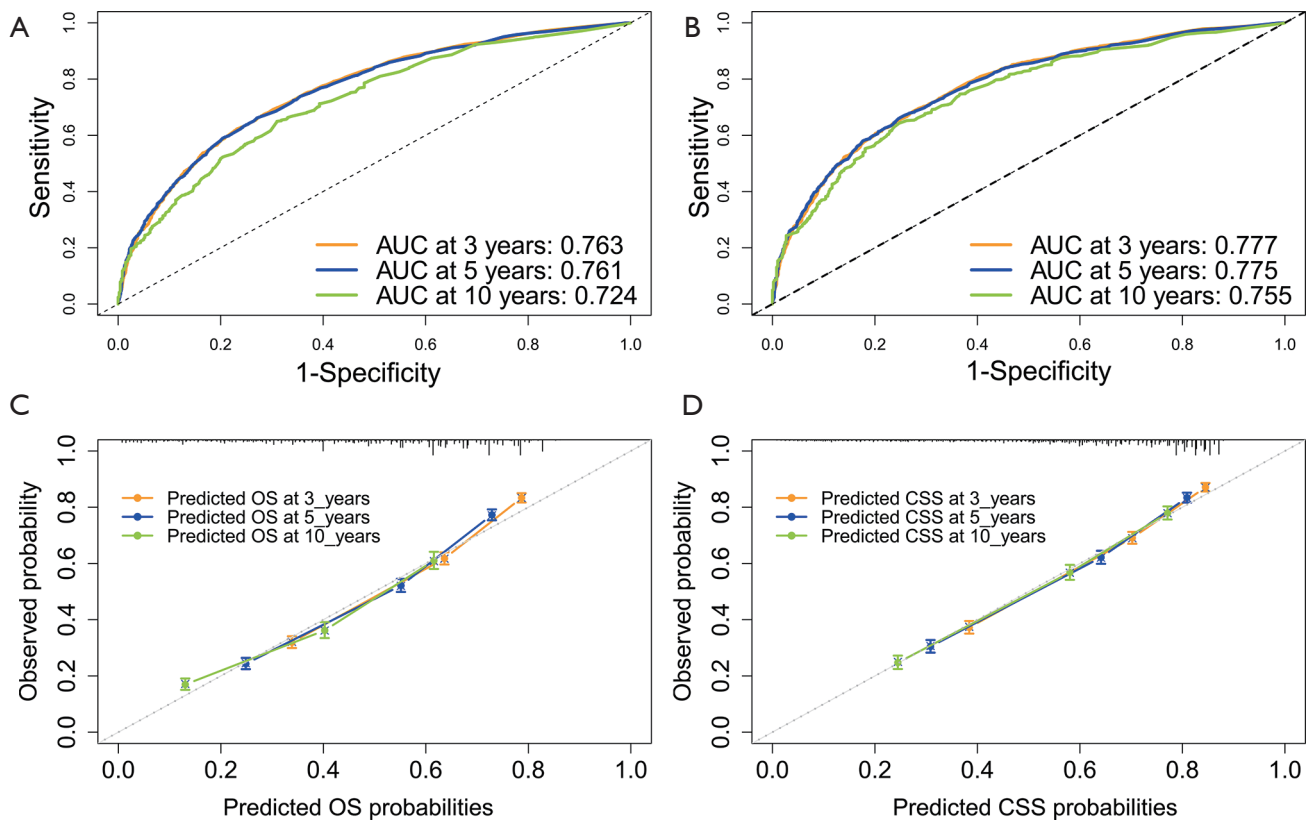


Figure S2 The discrimination and calibration curves of nomogram for 3-, 5- and 10-year OS and CSS. (A) and (B) show the ROC curves of the 3-, 5-, and 10-year OS and CSS nomogram, respectively. C and D show the calibration curves of 3-, 5-, and 10-year OS and CSS nomogram, respectively. The 45-degree dashed line represents a perfect match between the nomogram-predicted survival (X-axis) and actual survival (Y-axis). The perpendicular line represents 95% confidence intervals (CI) of actual survival. AUC, area under the curve; OS, overall survival; CSS, cancer-specific survival; ROC, receiver operating characteristic.