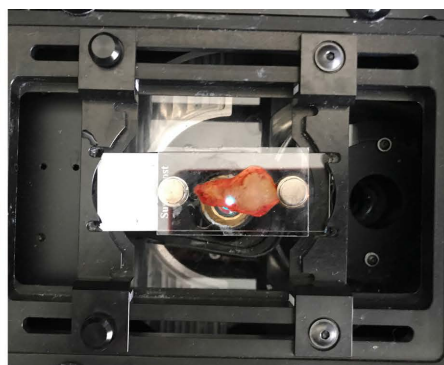
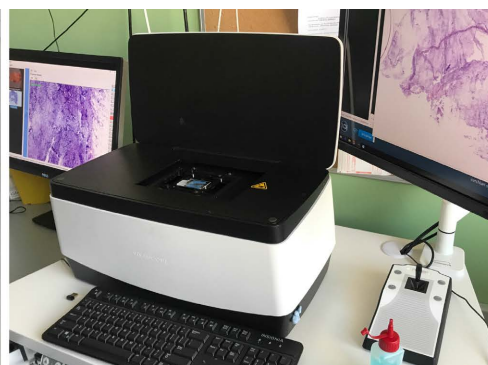




Preparation of a prostate apex; saline, and orange acridine staining for 30 seconds



Fresh specimen (lateral margin) inside a glass, located in the microscope; scanning with laser from the bottom, the microscopical image appears on the main screen



Setup of confocal microscope. From the right: main screen, a pc where the image instantaneously appears while scanning; the microscope, keyboard and mouse; additional screen

Figure S1 Confocal microscope setup.