

Figure S1 Global trends in PC burden by regions. (A) ASPR in 2021 and (B) their EAPC from 1990 to 2021 by region. (C) DALYs in 2021 and (D) their EAPC from 1990 to 2021 by region. ASPR, age-standardized prevalence rate; DALY, disability-adjusted life year; EAPC, estimated annual percentage change; PC, prostate cancer.

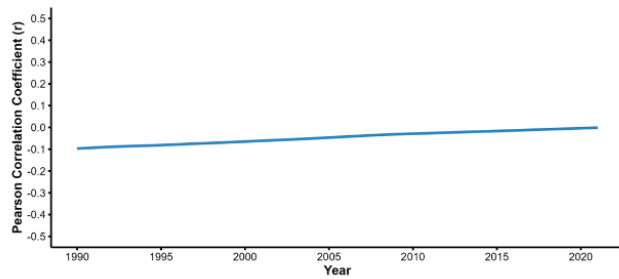
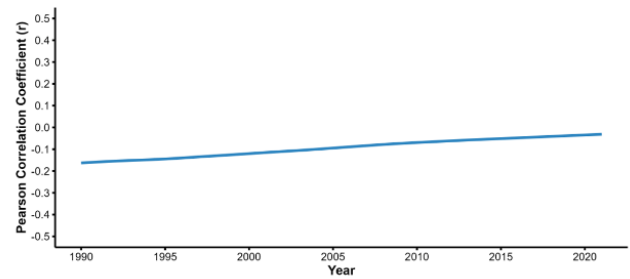
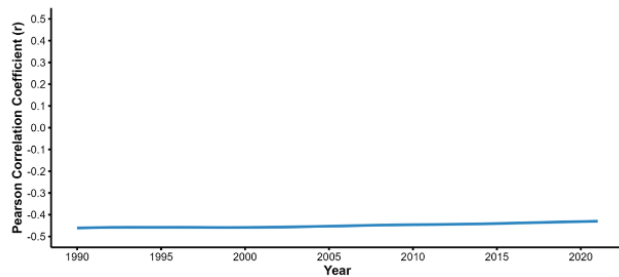
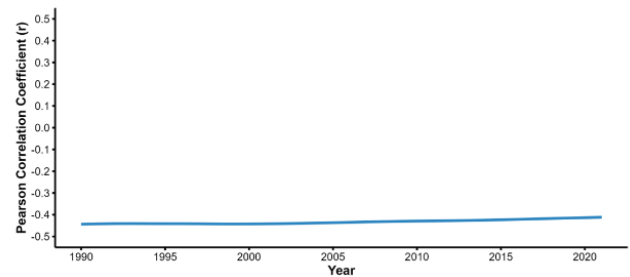
A**Temporal Correlation Between SDI and EAPC of Prostate Cancer Incidence****B****Temporal Correlation Between SDI and EAPC of Prostate Cancer Prevalence****C****Temporal Correlation Between SDI and EAPC of Prostate Cancer Deaths****D****Temporal Correlation Between SDI and EAPC of Prostate Cancer DALYs**

Figure S2 Pearson correlation analysis between the EAPC and the SDI in PC. (A) Incidence. (B) Prevalence. (C) Deaths. (D) DALYs. DALY, disability-adjusted life year; EAPC, estimated annual percentage change; SDI, socio-demographic index; PC, prostate cancer.

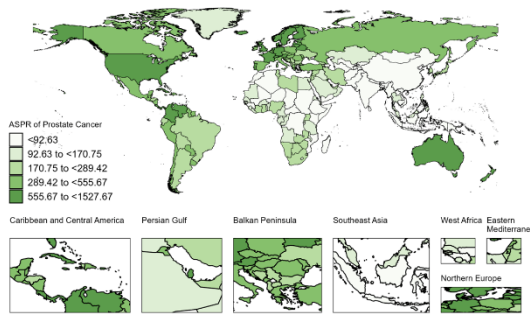
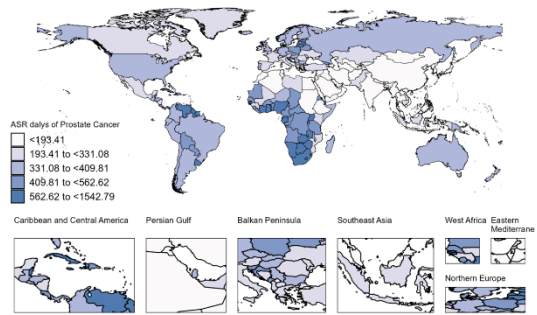
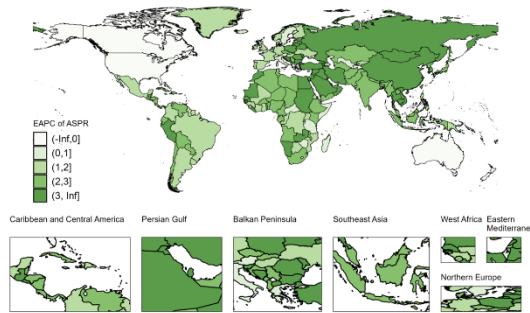
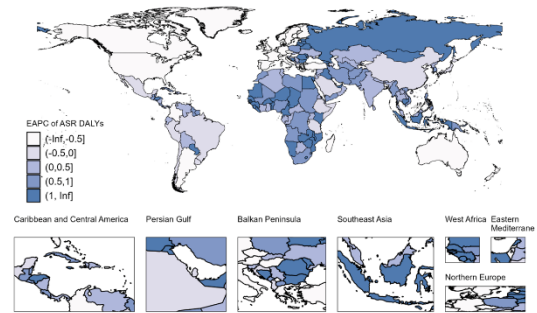
A**B****C****D**

Figure S3 Global trends in PC burden by countries and regions. (A) ASPR and (B) DALYs in 2021 by country. (C) EAPC of ASPR, and (D) EAPC of DALYs from 1990 to 2021, by country. ASPR, age-standardized prevalence rate; DALY, disability-adjusted life year; EAPC, estimated annual percentage change; PC, prostate cancer.

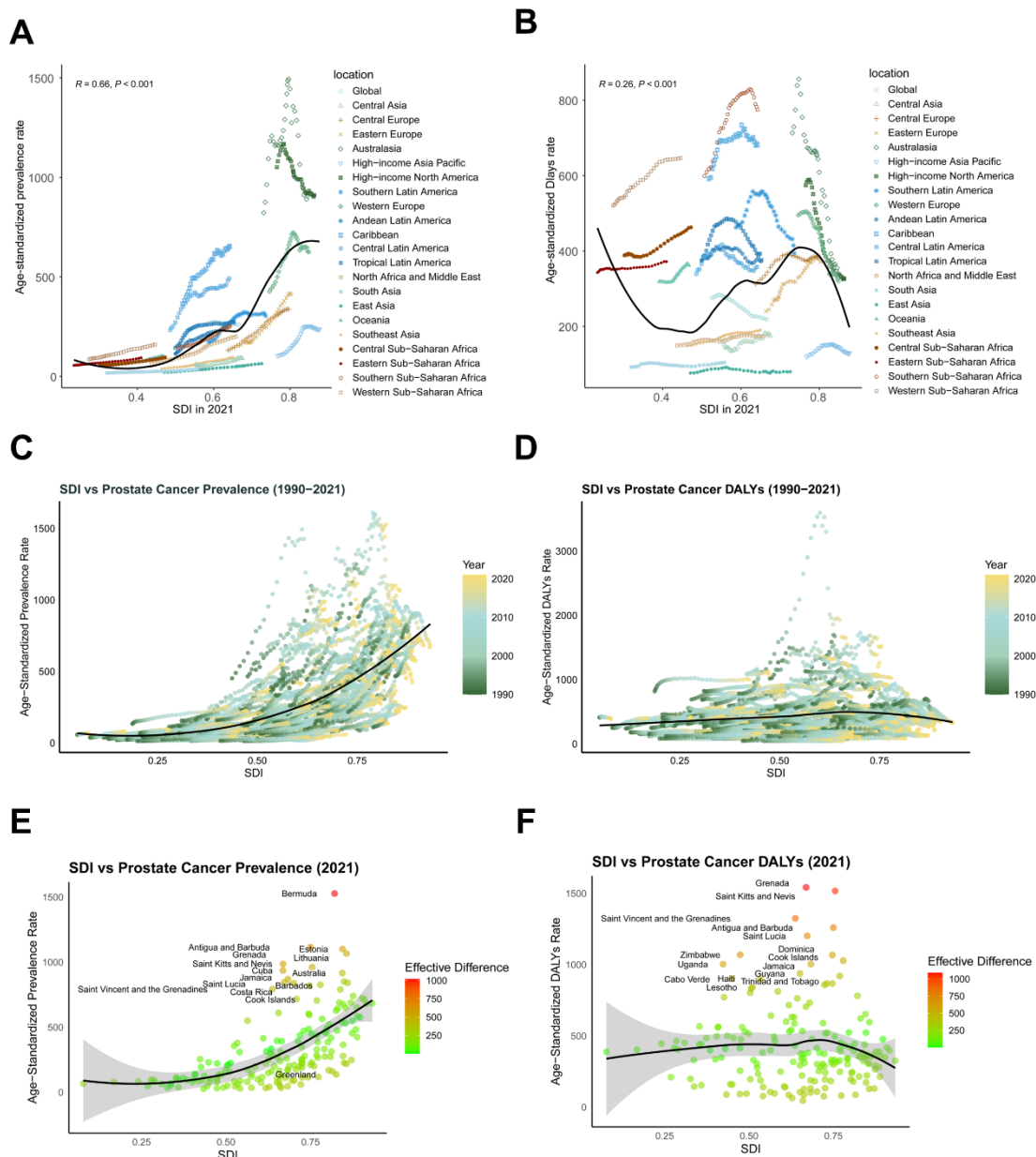


Figure S4 Global ASPR and DALYs of PC in relation to the SDI [1990–2021]. (A,C,E) ASPR and (B,D,F) DALYs (per 100,000) for PC plotted against SDI. Points above the solid line represent countries or territories with a higher-than-expected burden, while points below the line indicate a lower-than-expected burden. ASPR, age-standardized prevalence rate; DALY, disability-adjusted life year; SDI, socio-demographic index; PC, prostate cancer.