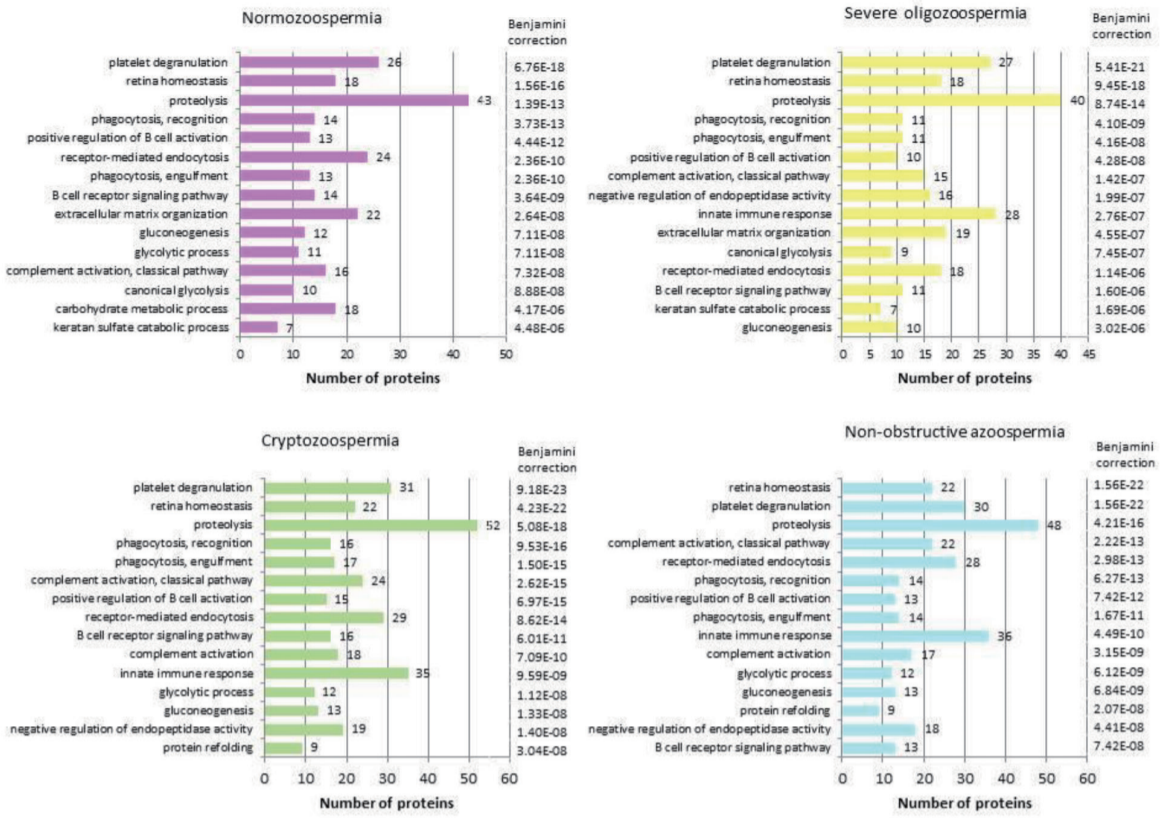


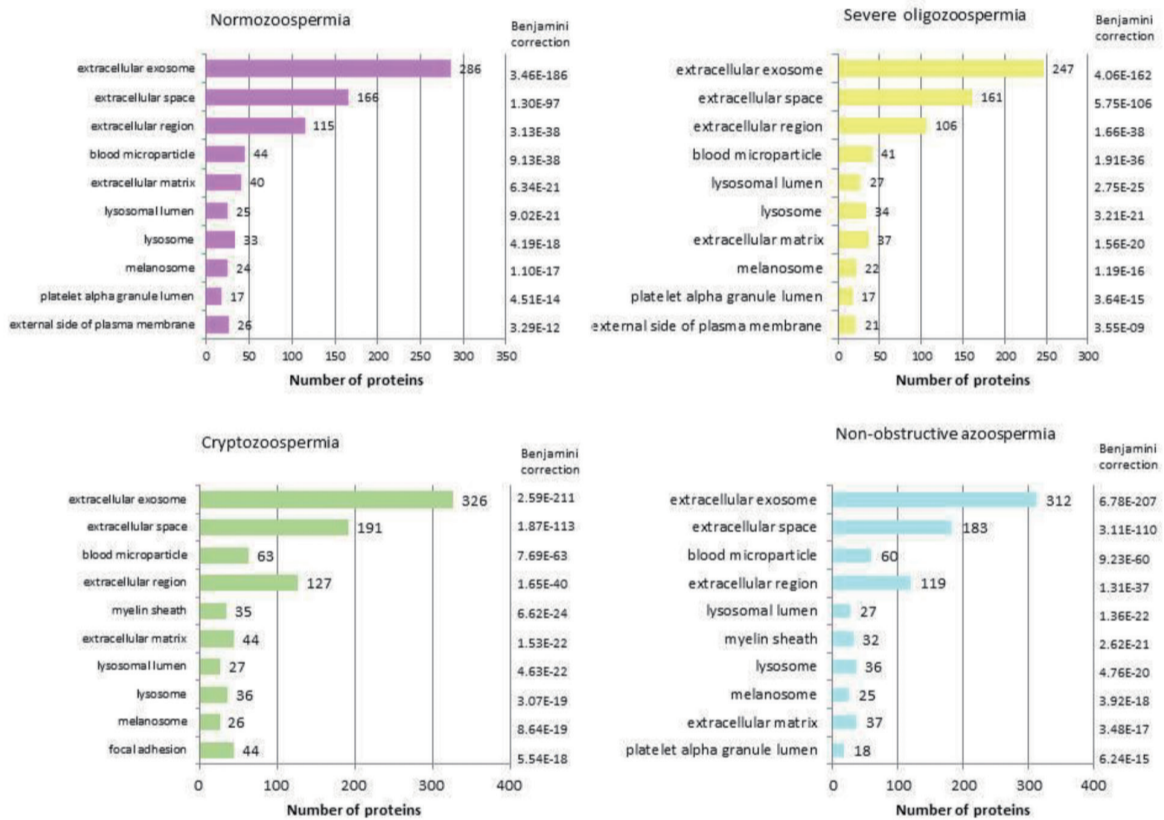
A

GO: Biological Process Terms



B

GO: Cellular Compartmentalization Terms



C

GO: Molecular Function

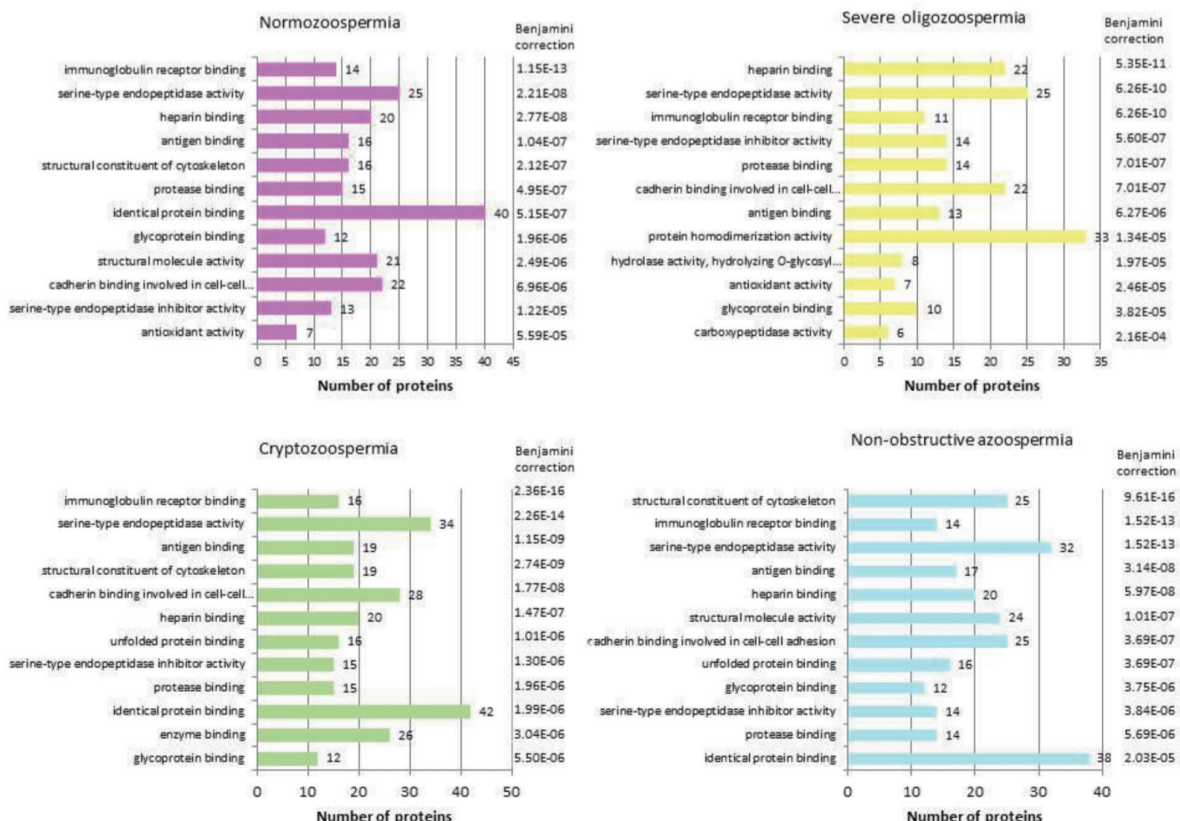


Figure S1 GO analysis of the seminal fluid proteomes presenting ten the most important terms of (A) Biological Process, (B) Cellular Compartmentalization and (C) Molecular Function among the cohorts of infertile males. GO, Gene Ontology.