

Figure S1 Eosin-aniline black method ($\times 100$). A: Spermatozoa with white heads are considered alive; B: red or dark pink heads of spermatozoa are considered dead.

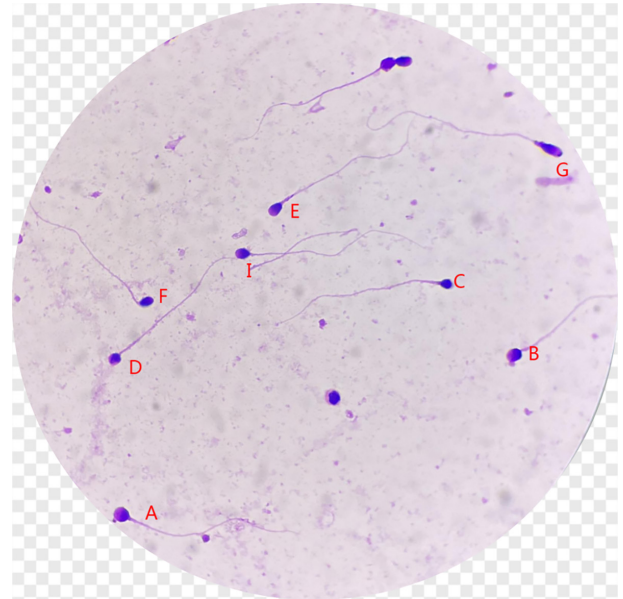


Figure S3 Sperm morphology (necrozoospermic): Diff-Quik staining ($\times 100$). A, B, C, E, F, D: abnormal; I: normal.

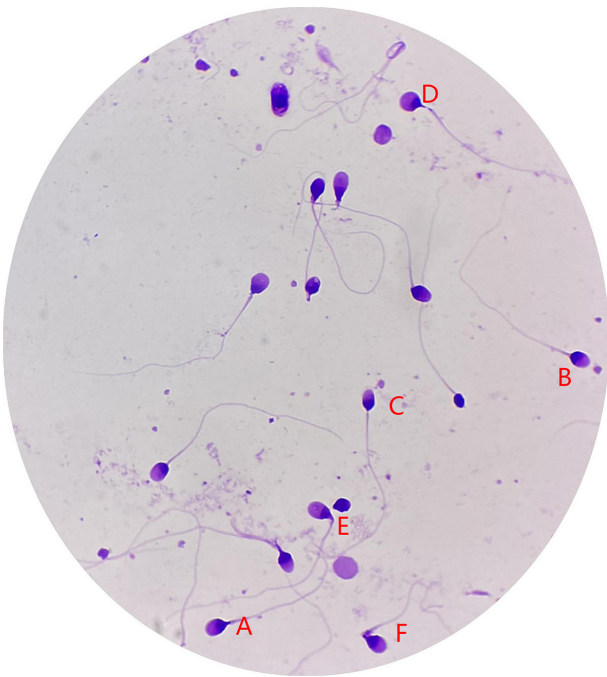


Figure S2 Sperm morphology (controls): Diff-Quik staining ($\times 100$). A, B, C: normal; D, E, F: abnormal.