

Figure S1 Different TSR scores in HE slides. (A) TSR score of 10%; (B) TSR score of 20%; (C) TSR score of 30%; (D) TSR score was 40%; (E) TSR score was 50%; (F) TSR score was 60%; (G) TSR score was 70%; (H) TSR score was 80%; (I) TSR score of 90%; (J) The TSR score was 100%. TSR, tumor stroma ratio; HE, hematoxylin-eosin.

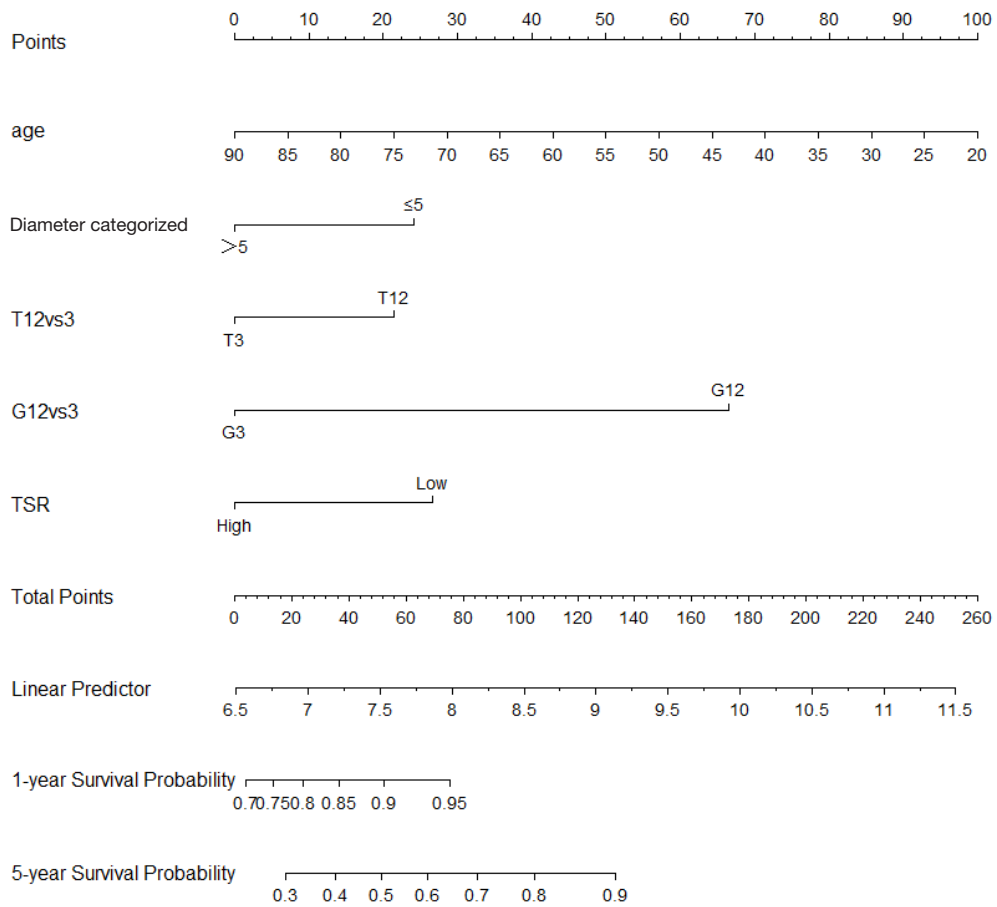


Figure S2 Nomogram for predicting OS of ccRCC patients. TSR, tumor stroma ratio; OS, overall survival; ccRCC, clear cell renal cell carcinoma.