

**Table S1** The description of CPRGs

Cuproptosis

*FDX1**LIAS**LIPT1**DLD**DLAT**PDHA1**PDHB**MTF1**GLS**CDKN2A*

CPRGs, cuproptosis-related genes.

**Table S2** Lasso\_coef for calculating risk\_score

Genes

lasso\_coef

*GOLT1A*

-0.00577

*STXBP2*

-0.02566

*DCXR*

0.135932

*ILVBL*

0.091837

*ZNF524*

-0.19804

*COX7B*

-0.00812

*MED19*

0.070801

*FKBP9*

0.042239

*ALDH1L2*

0.095136

*RILP*

-0.03035

*EXT1*

-0.01006

*TPST1*

0.064143

*EMP1*

0.143527

*LIPT1*

-0.176

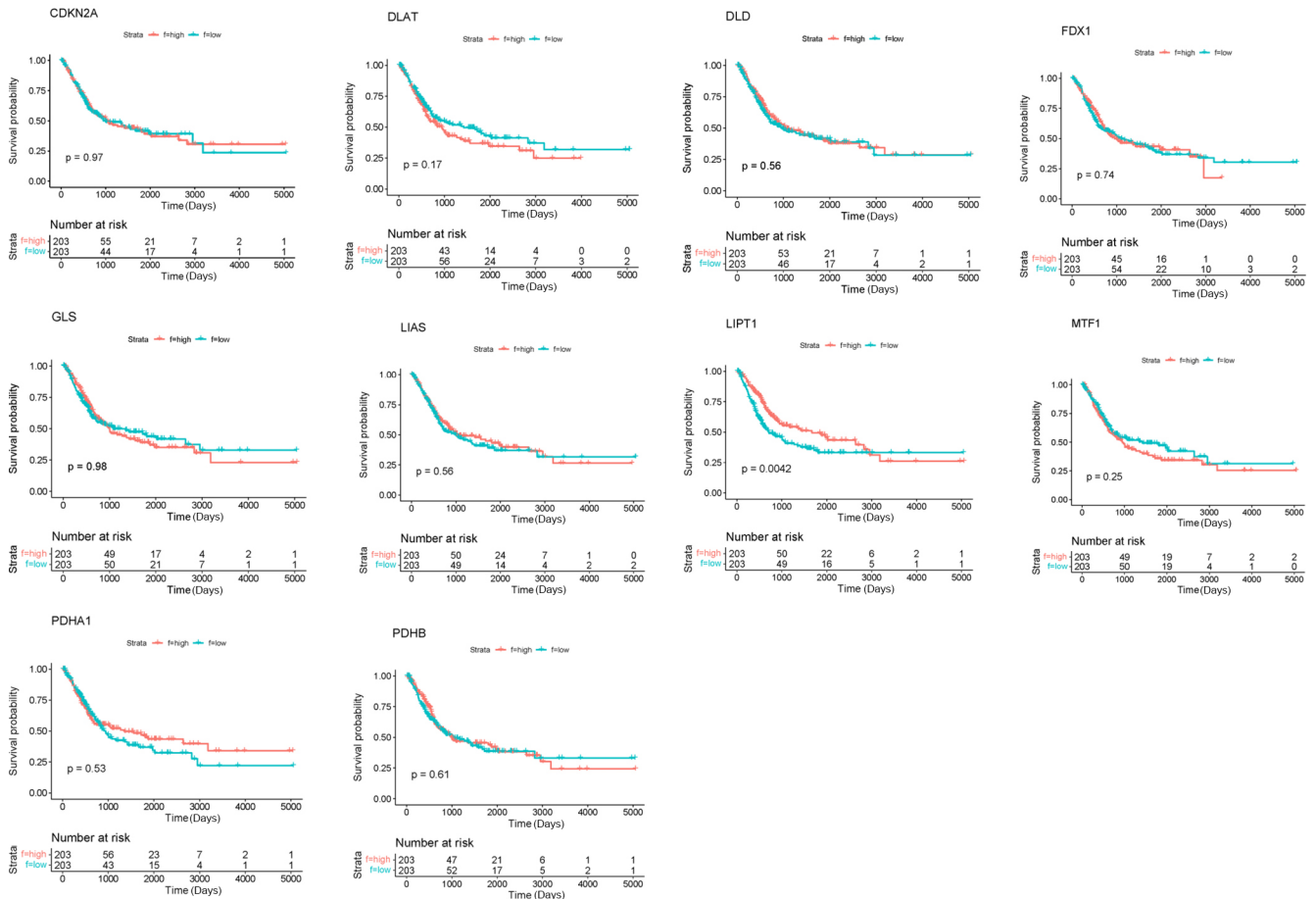
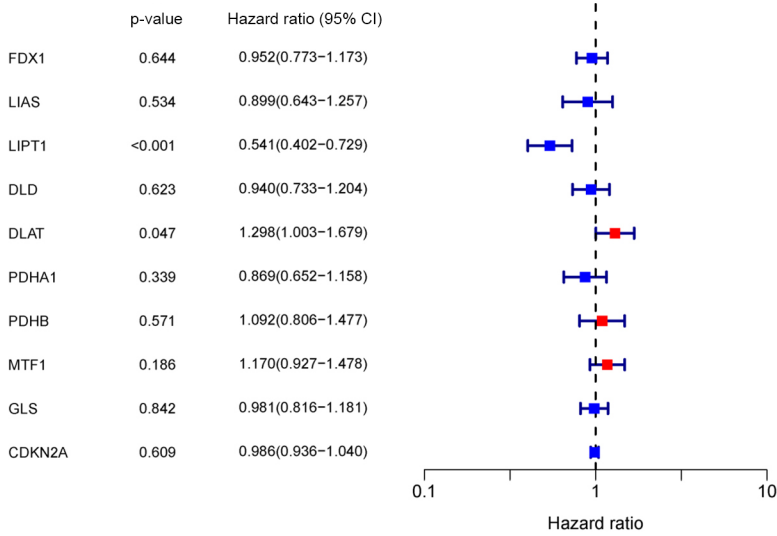
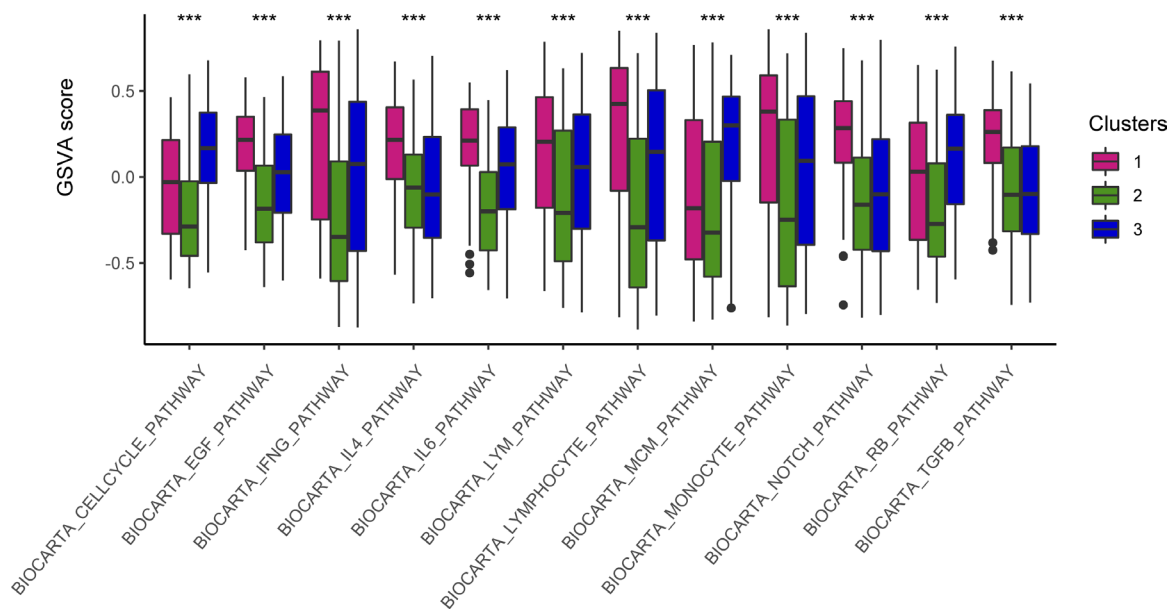
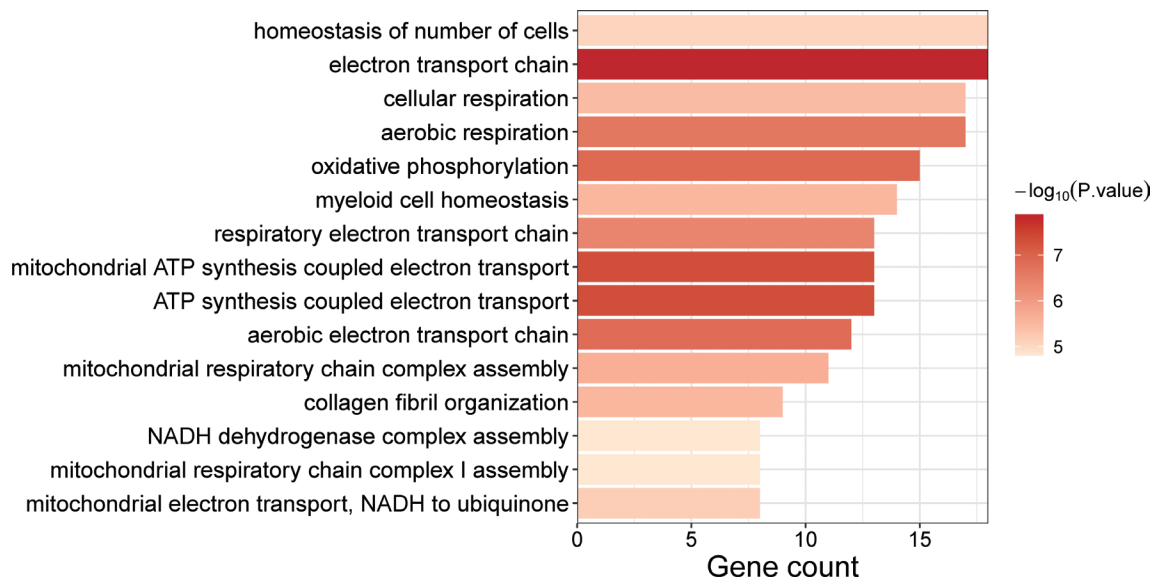


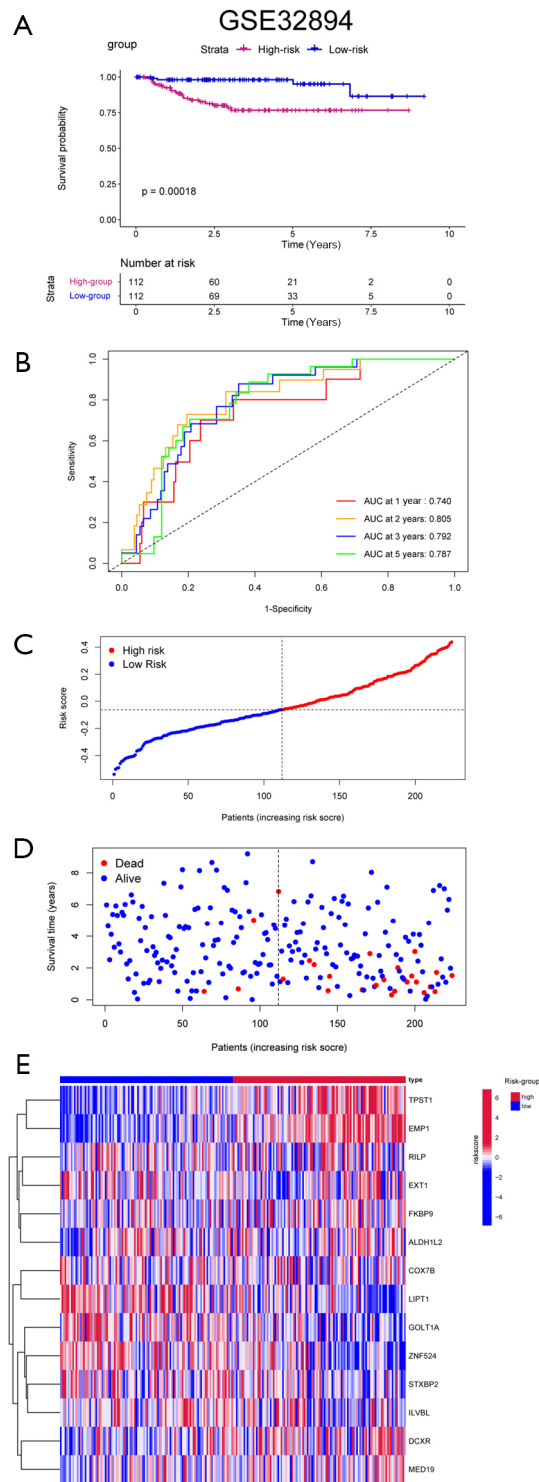
Figure S1. Prognostic analysis of cuproptosis-related genes in BLCA. BLCA, bladder cancer.



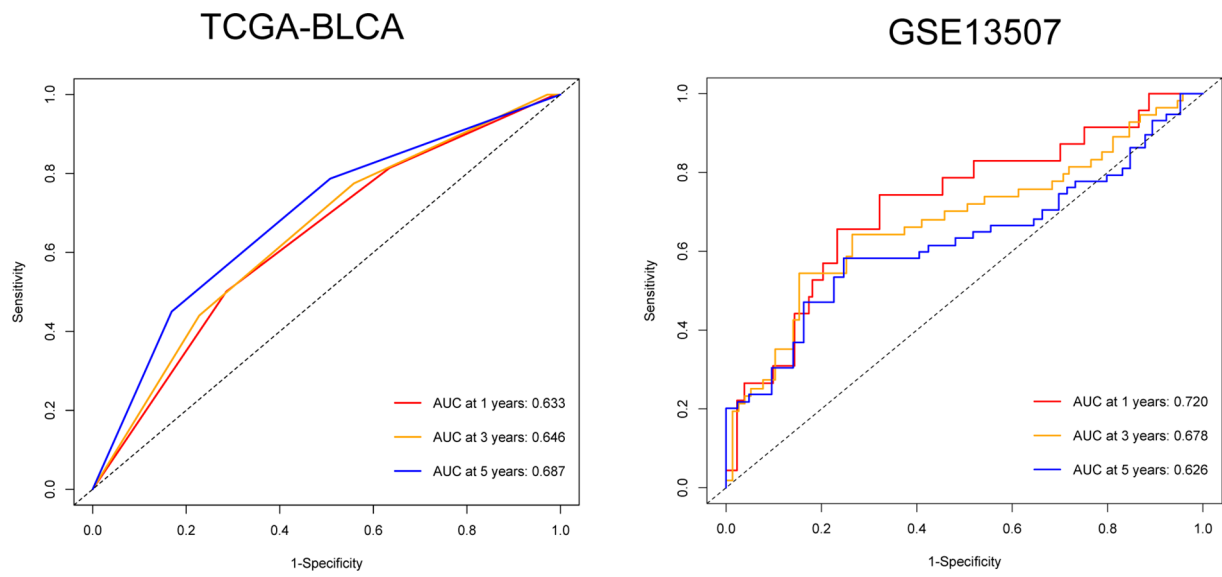
**Figure S2** Pathway analysis of NMF clusters in BLCA. \*\*\*,  $P < 0.001$ . BLCA, bladder cancer; NMF, non-negative matrix factorization; GSVA, gene set variation analysis.



**Figure S3** Gene ontology analysis of DEGs. DEGs, differentially expressed genes; ATP, adenosine triphosphate; NADH, nicotinamide adenine dinucleotide.



**Figure S4** Predictive capacity of CPRG\_score in prognosis of patients from an external control. CPRGs, cuproptosis-related genes; AUC, area under the curve.



**Figure S5** Predictive capacity of CPRG\_score in patients' prognosis. CPRGs, cuproptosis-related genes; AUC, area under the curve.