

Figure S1 CT scans of representative cases before and after presurgical therapy: (A) primary tumor and lymph node metastasis; (B) primary tumor and inferior vena cava tumor thrombus; (C) primary tumor.

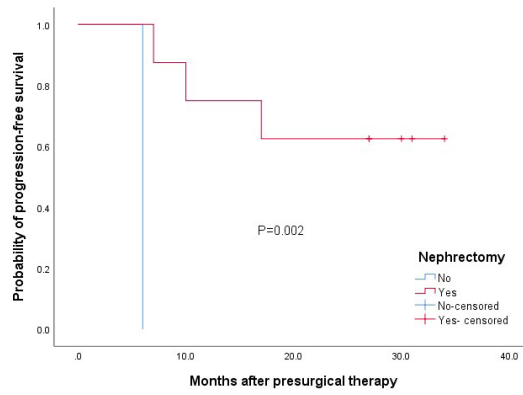


Figure S2 PFS with (red line) and without (blue line) nephrectomy from the time of presurgical therapy initiation. PFS, progression-free survival.

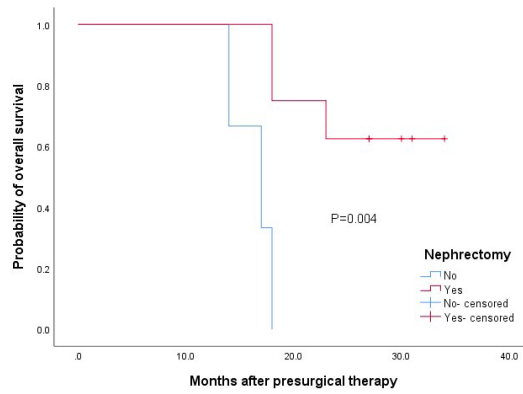


Figure S3 OS with (red line) and without (blue line) nephrectomy from the time of presurgical therapy initiation. OS, overall survival.

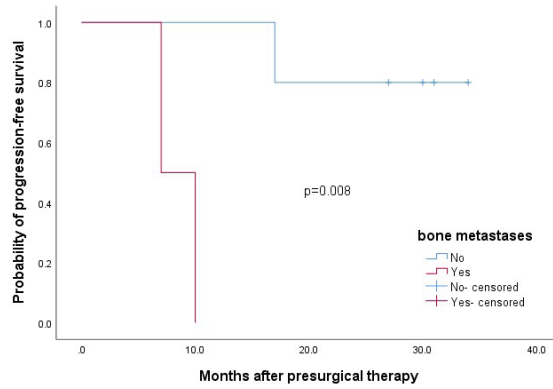


Figure S4 PFS with (red line) and without (blue line) bone metastases in the nephrectomy group. PFS, progression-free survival.

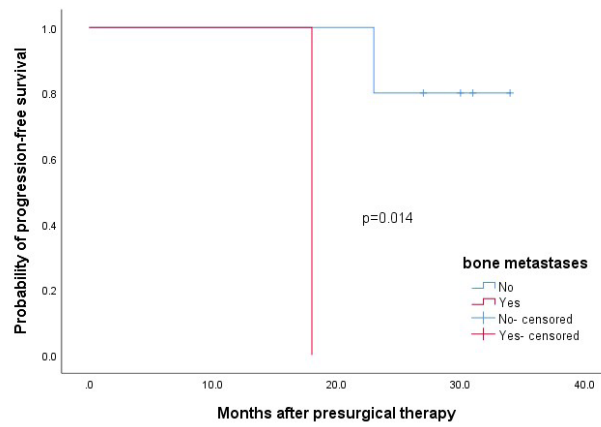


Figure S5 OS with (red line) and without (blue line) bone metastases in the nephrectomy group. OS, overall survival.