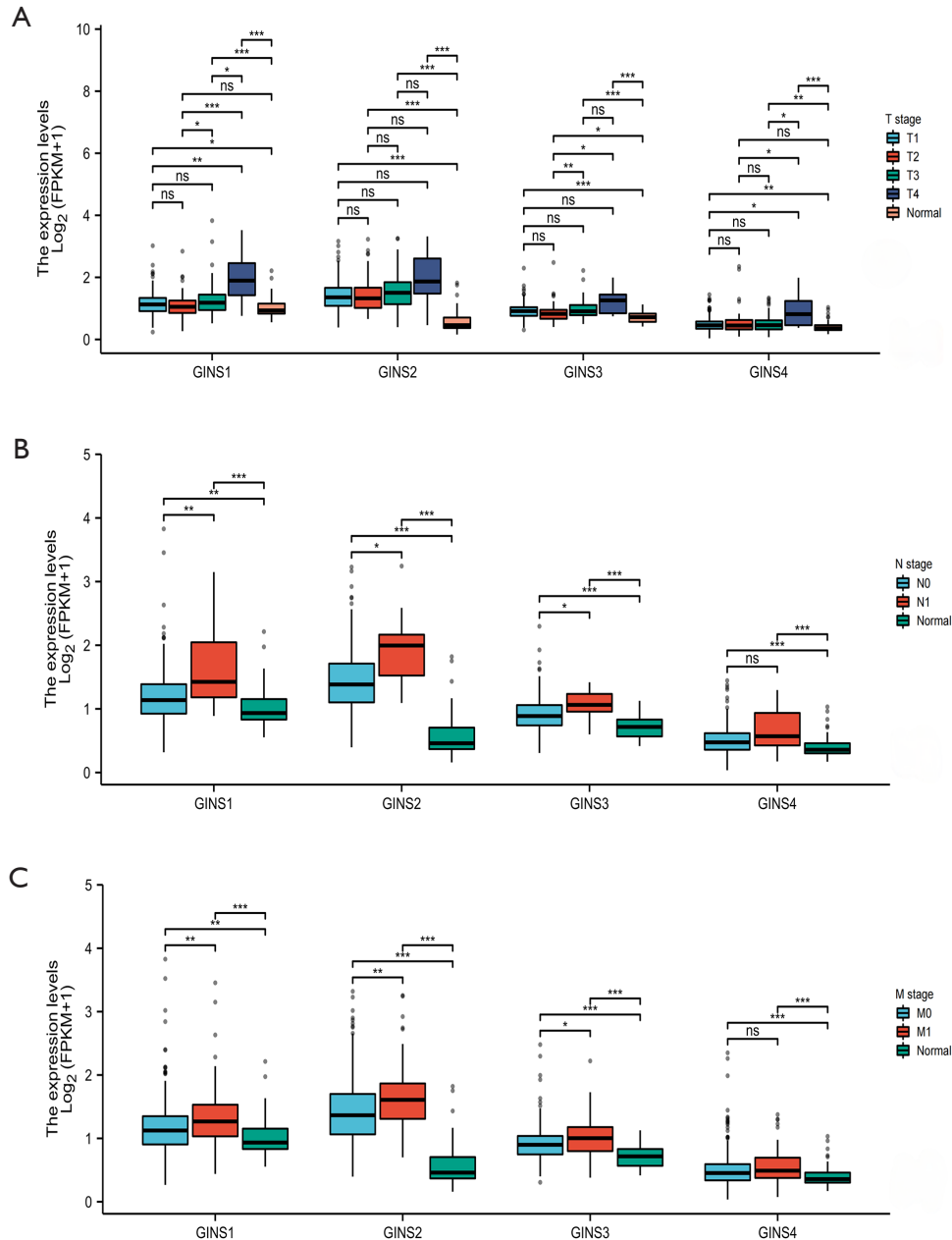
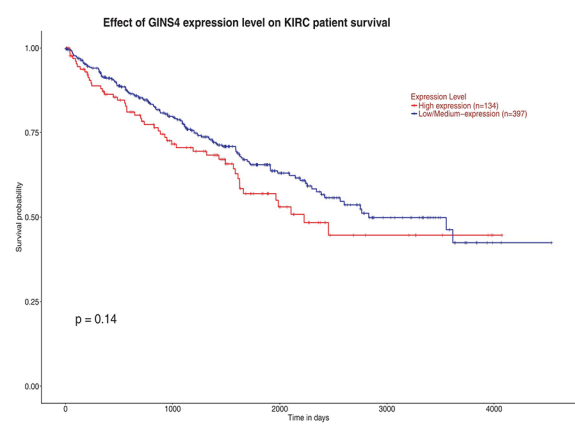
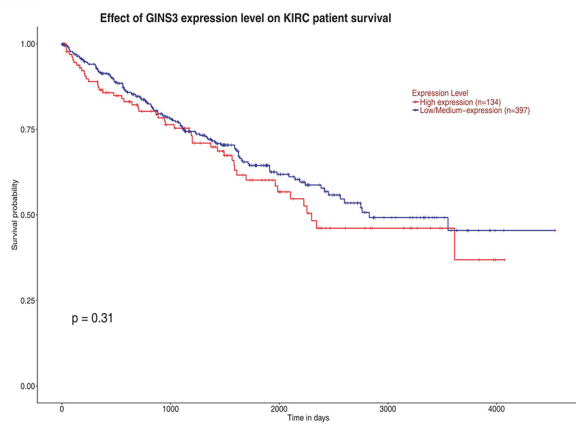
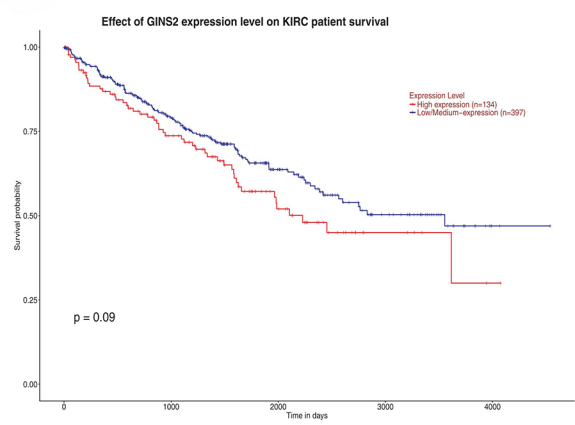
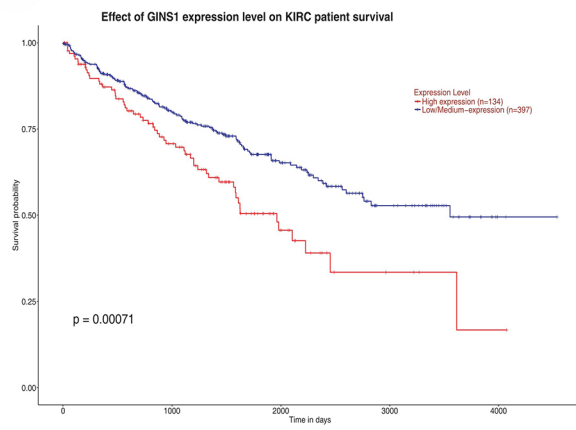


We explored the relationship between *GINS* subunit messenger RNA expression in ccRCC patients and tumor stages T, N and M, and used the University of ALabama at Birmingham CANcer (UALCAN) platform to study the effect of the differential expression of the *GINS* subunits on the prognosis of clear cell renal cell carcinoma (ccRCC) patients.



**Figure S1** Relationship between mRNA expression of the *GINS* subunits and the T stage, N stage and M stage of cancer in ccRCC patients. (A) The mRNA expression of the *GINS* subunits (*GINS1/2/3/4*) was correlated with the cancer T stage of patients. (B) The mRNA expression of the *GINS* subunits (*GINS1/2/3/4*) was correlated with the cancer N stage of patients. (C) The mRNA expression of *GINS* subunits (*GINS1/2/3/4*) was correlated with the cancer M stage of patients. ns,  $P > 0.05$ ; \*,  $P < 0.05$ ; \*\*,  $P < 0.01$ ; \*\*\*,  $P < 0.001$ . mRNA, messenger RNA; *GINS*, Go-Ichi-Nii-San; *GINS1*, Go-Ichi-Nii-San1; *GINS2*, Go-Ichi-Nii-San2; *GINS3*, Go-Ichi-Nii-San3; *GINS4*, Go-Ichi-Nii-San4; ccRCC, clear cell renal cell carcinoma.



**Figure S2** Prognostic role of *GINS* subunit expression in ccRCC patients. *GINS*, Go-Ichi-Nii-San; *GINS1*, Go-Ichi-Nii-San1; *GINS2*, Go-Ichi-Nii-San2; *GINS3*, Go-Ichi-Nii-San3; *GINS4*, Go-Ichi-Nii-San4; ccRCC, clear cell renal cell carcinoma.