

Figure S1 1- and 5-year time-dependent ROC analysis of the lncRNA risk signature in the training, validation, and combination set.

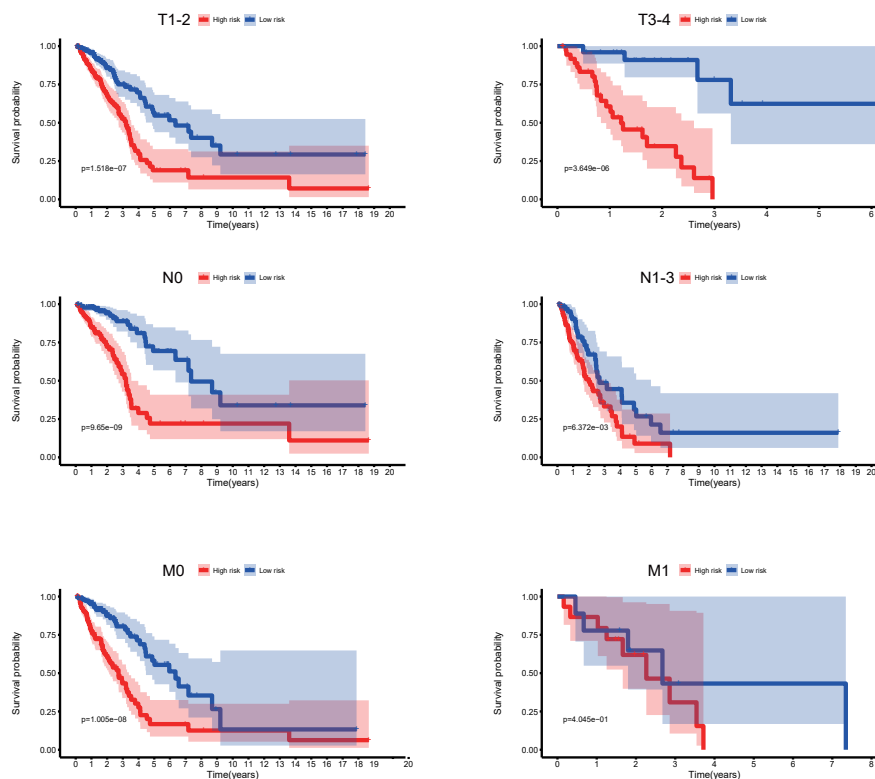


Figure S2 The difference in survival curves between the high- and low-risk group stratified by TNM stage.

**Table S1** The comparison analysis between the training set and validation set

	Training set (N=351)	Validation set (N=148)	P value
Age, years			0.468†
Median	65.1(33-88)	64.4(39-81)	
Gender			0.667*
Female	190(54.1%)	77(52.0%)	
Male	161(45.9%)	71(48.0%)	
T stage			0.134*
T1	109 (31.1%)	57(38.5%)	
T2	198 (56.4%)	69(46.6%)	
T3-T4	41 (11.7%)	22(14.9%)	
TX	3 (0.8%)	0(0%)	
N stage			0.892*
N0	230 (65.5%)	95(64.2%)	
N1	61 (17.4%)	29(19.6%)	
N2-N3	50 (14.2%)	19(12.8%)	
NX	9 (2.6%)	5(3.4%)	
UnKnow	1 (0.3%)	0(0%)	
M stage			0.121*
M0	233(66.4%)	97(65.5%)	
M1	20(5.7%)	4(2.7%)	
MX	96(27.3%)	43(29.1%)	
Unknow	2(0.6%)	4(2.7%)	
AJCC stage			0.559*
Stage I	194(55.2%)	79(53.4%)	
Stage II	76(21.7%)	39(26.4%)	
Stage III-IV	76(21.7%)	27(18.2%)	
Unknow	5(1.4%)	3(2.0%)	

\* chi-square or Fisher's exact test. † student's *t*-test.