

Figure S1 Flow diagram of patient selection.

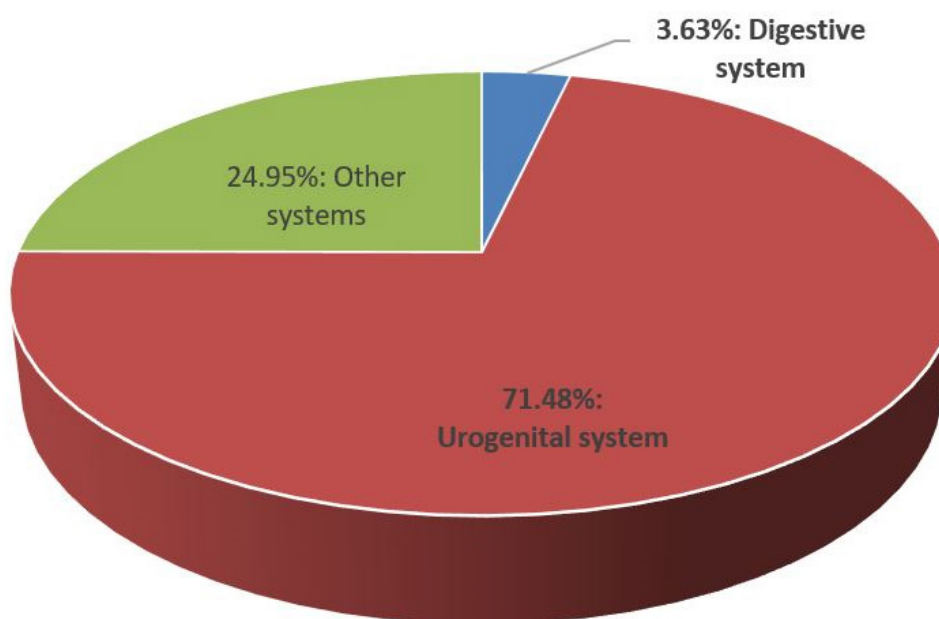


Figure S2 Pie chart to show the proportion of different tumor sites for EMPD. EMPD, extramammary Paget's disease.

Table S1 TNM, AJCC, and SEER staging for extramammary Paget disease

Features	Number	Percent (%)
T stage	501	100
T0	1	0.2
T1	232	46.3
T2	82	16.4
T3	5	1.0
T4	2	0.4
Unknown	179	35.7
N stage	501	100
N0	419	83.6
N1	5	1.0
N2	5	1.0
N3	3	0.6
Unknown	69	13.8
M stage	501	100
M0	487	97.2
M1	8	1.6
Unknown	6	1.2
AJCC stage	501	100
I	220	43.9
II	80	16.0
III	4	0.8
IV	17	3.3
Unknown	180	35.9
SEER stage	1848	100
Localized	1281	69.3
Regional	227	12.3
Distant	38	2.1
Unstaged	204	11.0
Unknown	98	5.3

TNM, Tumor, Node, Metastasis; AJCC, American Joint Committee on Cancer; SEER, The Surveillance, Epidemiology, and End Results database.

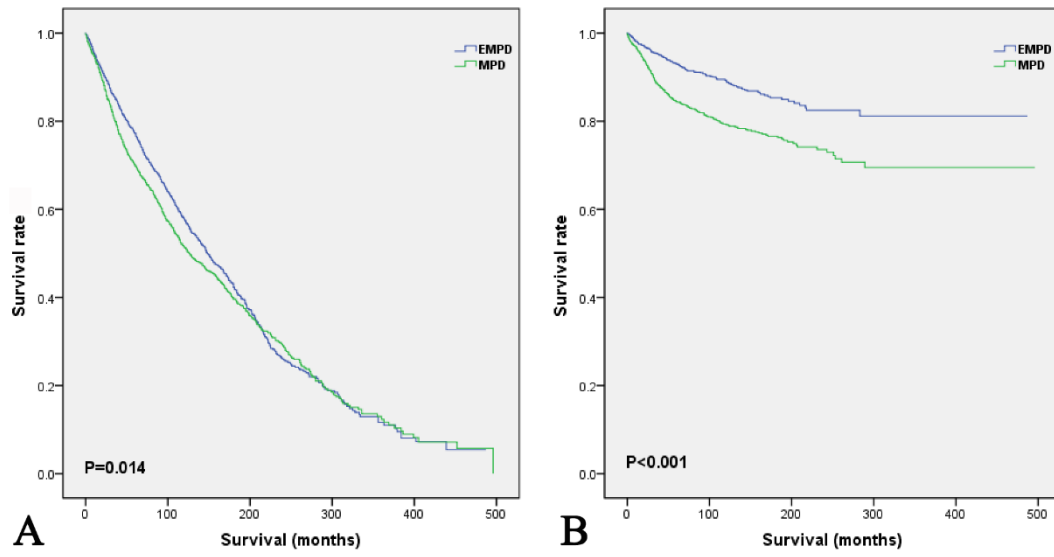


Figure S3 Overall survival (A) and cancer-specific survival (B) for EMPD and MPD. The diagnosed years and ages for MPD and EMPD patients was matched in two compared groups. EMPD, extramammary Paget’s disease; MPD, mammary Paget’s disease.