

Table S1 XXXXXXXXXXXXXXX

Samples	Gender	Age (years)	Grade	Lymphovascular invasion	Perineural invasion	pTNM
LNM-						
NEC1	M	66	G2	No	No	T1N0M0
NEC3	F	75	G2	No	No	T1N0M0
NEC6	M	62	G1-G2	No	No	T1N0M0
LNM+						
MEC2	M	64	G2	Yes	No	T1N1M0
MEC3	F	66	G2-G3	No	No	T1N1M0
MEC5	M	62	G2-G3	Yes	No	T1N2M0

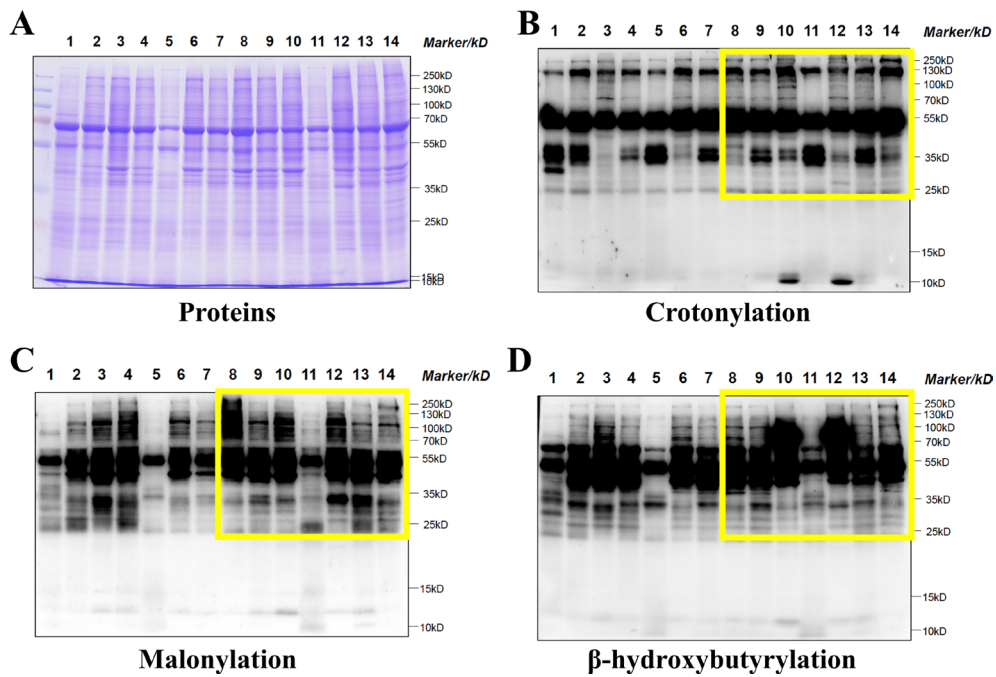
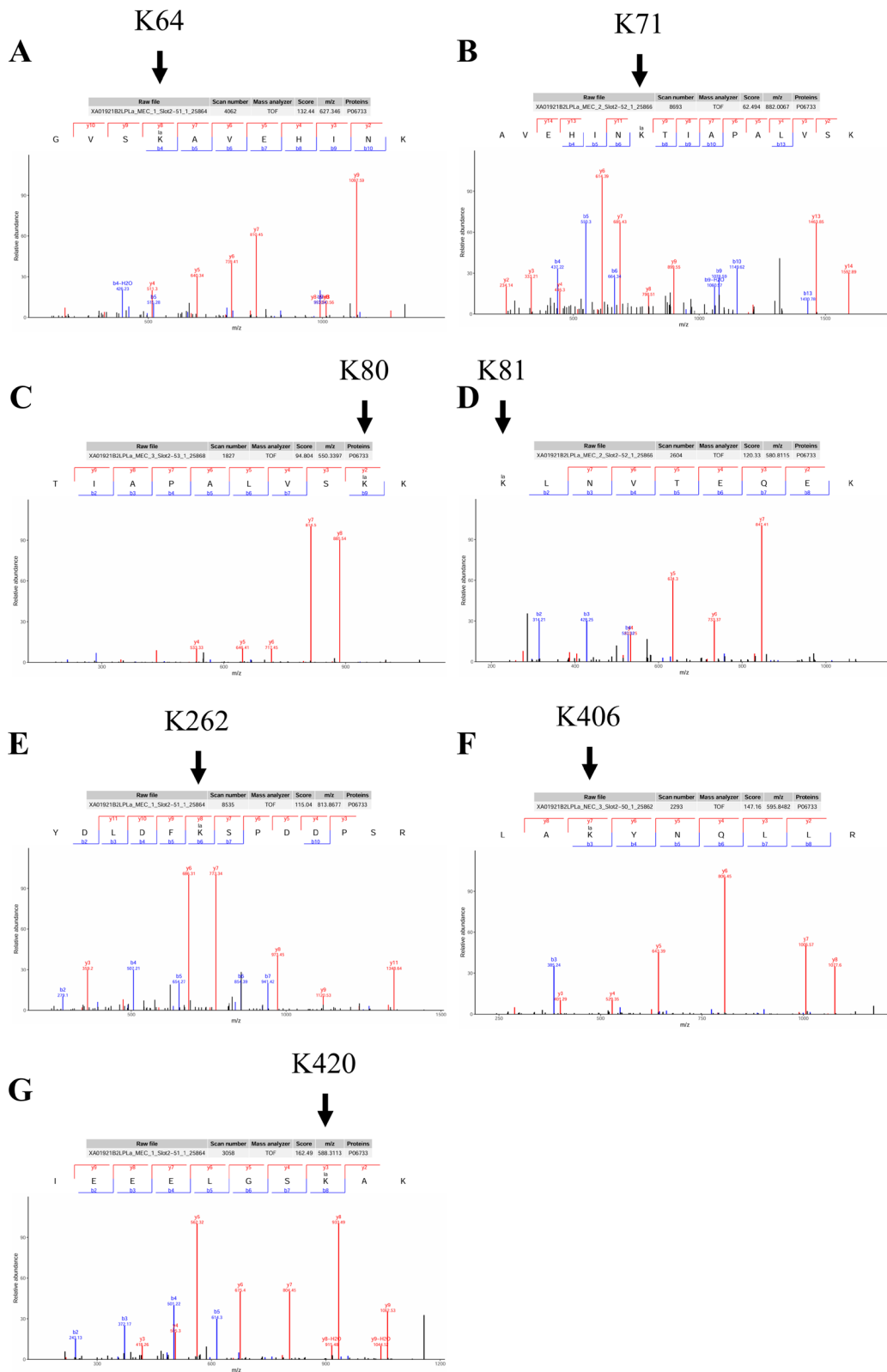


Figure S1 XXXXXXXXXXXXXXX. (A) Coomassie-stained gel shows equal loading amounts; (B-D) Representative western blot of lysine crotonylation (B), malonylation (C) and  $\beta$ -hydroxybutyrylation (D) in NEC and MEC.



**Figure S2** Tandem mass spectrometry (MS/MS) spectra of ENO1 lactylation sites, K64 (A), K71 (B), K80 (C), K81 (D), K262 (E), K406 (F) and K420 (G).