

Figure S1 Results of the proportional hazards assumption test for the eight candidate genes. All P values >0.05, confirming that the assumption is met for the Cox regression model.

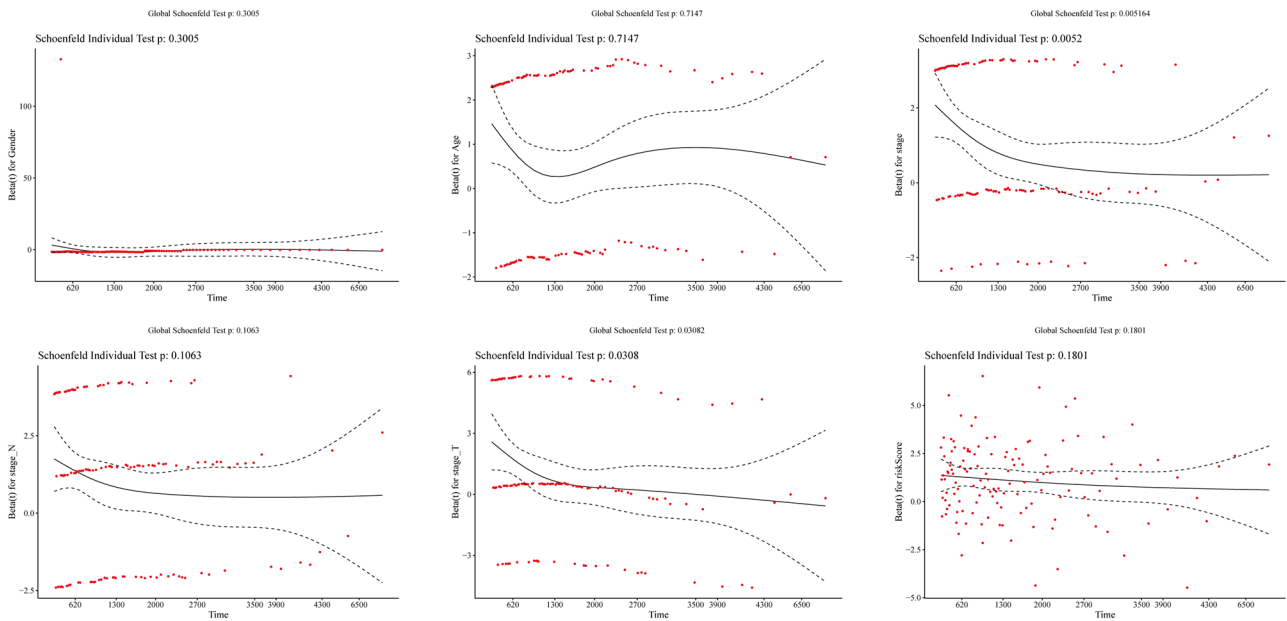


Figure S2 Proportional hazards assumption test for the risk score and clinical characteristics (gender, age, Stage-N). All P values >0.05, satisfying the assumption for the Cox regression model.

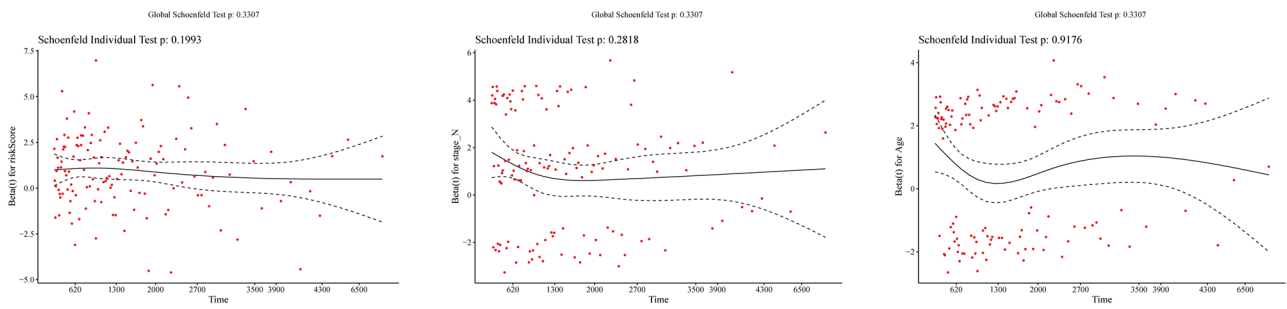


Figure S3 Proportional hazards assumption test for the significant features from the univariate analysis. The P values for age, Stage-N, and riskScore were all >0.05 , meeting the requirement for multivariable Cox regression modeling.