

Table S1 Primers for real-time PCR

Genes	Primers (5'-3')
<i>ANXA5</i>	
F	AGCGGGCTGATGCAGAAAC
R	ACTTCGGGATGTCAACAGAGT
<i>TM7SF2</i>	
F	CAGCATGAAGCCAAACCC
R	TCTGTGAACTGCGACCCG
Humen-GAPDH	
F	GGAAGCTTGTCAATGAAATC
R	TGATGACCCTTTTGGCTCCC

F, forward; GAPDH, glyceraldehyde 3-phosphate dehydrogenase; PCR, polymerase chain reaction; R, reverse.

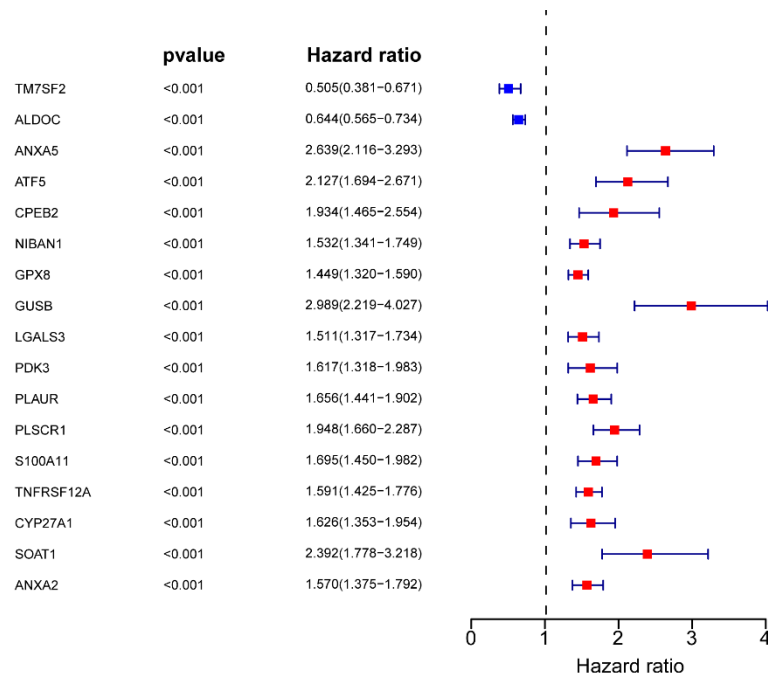


Figure S1 Forest plot of CMRGs in glioma based on univariate Cox regression. CMRGs, cholesterol metabolism-related genes.

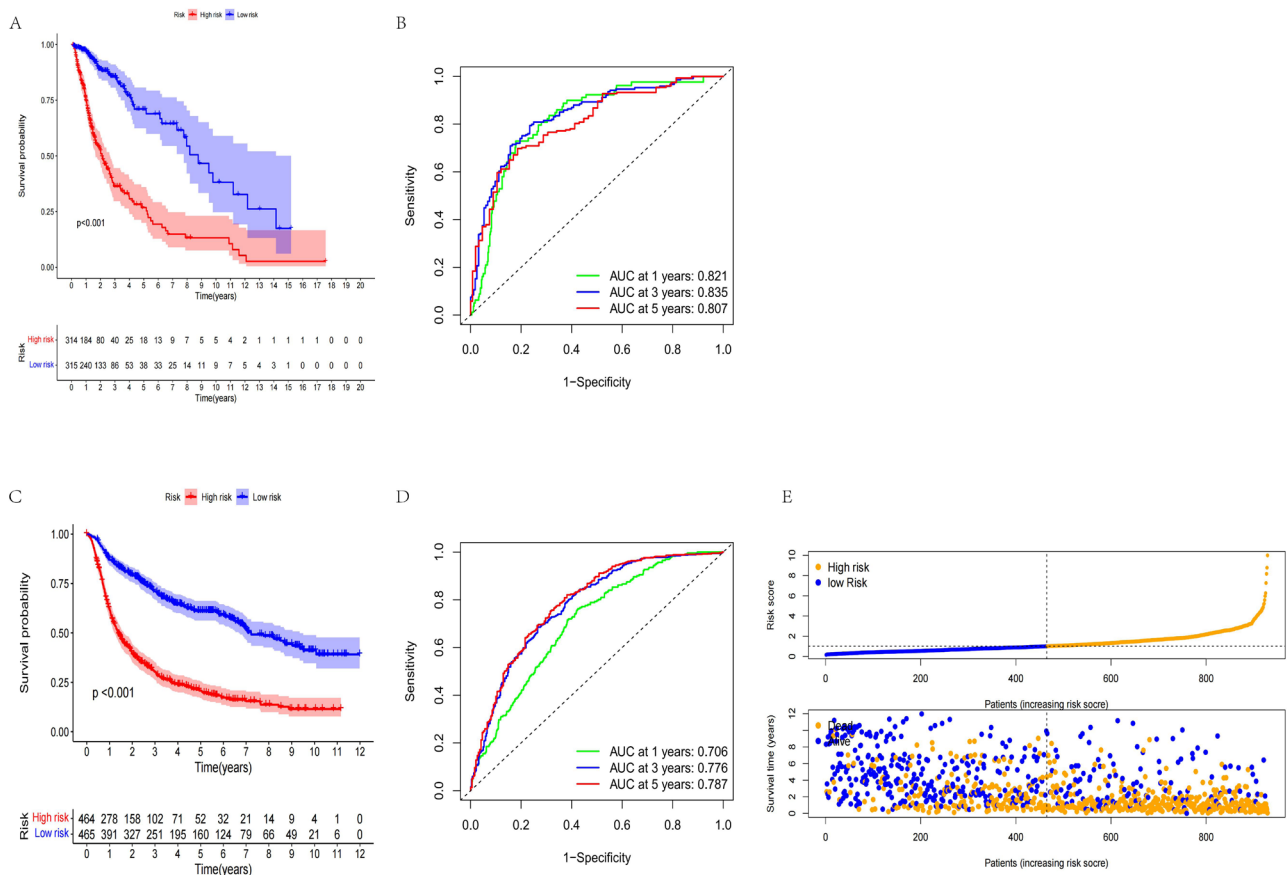


Figure S2 Validation of the prognostic risk model through Kaplan-Meier survival analysis and time-dependent ROC curves. (A) OS curve for the high- and low-risk groups in the TCGA cohort. (B) Time-dependent ROC curve of risk score. (C) Survival curve of the CRMGs risk model in high- and low-risk groups in the CGGA cohort. (D) Time-dependent ROC analysis of CMRGs. (E) Patients in the CGGA dataset were divided into high- and low-risk groups according to the increasing CMRG (upper). Heatmap of the modeling genes expression in high- and low-risk groups (below). AUC, area under the curve; CGGA, Chinese Glioma Genome Atlas; CMRGs, cholesterol metabolism-related genes; OS, overall survival; ROC, receiver operating characteristic; TCGA, The Cancer Genome Atlas.