

Figure S1 Threshold-based filtering using GeneCards relevance score for palmitoylation-associated genes.

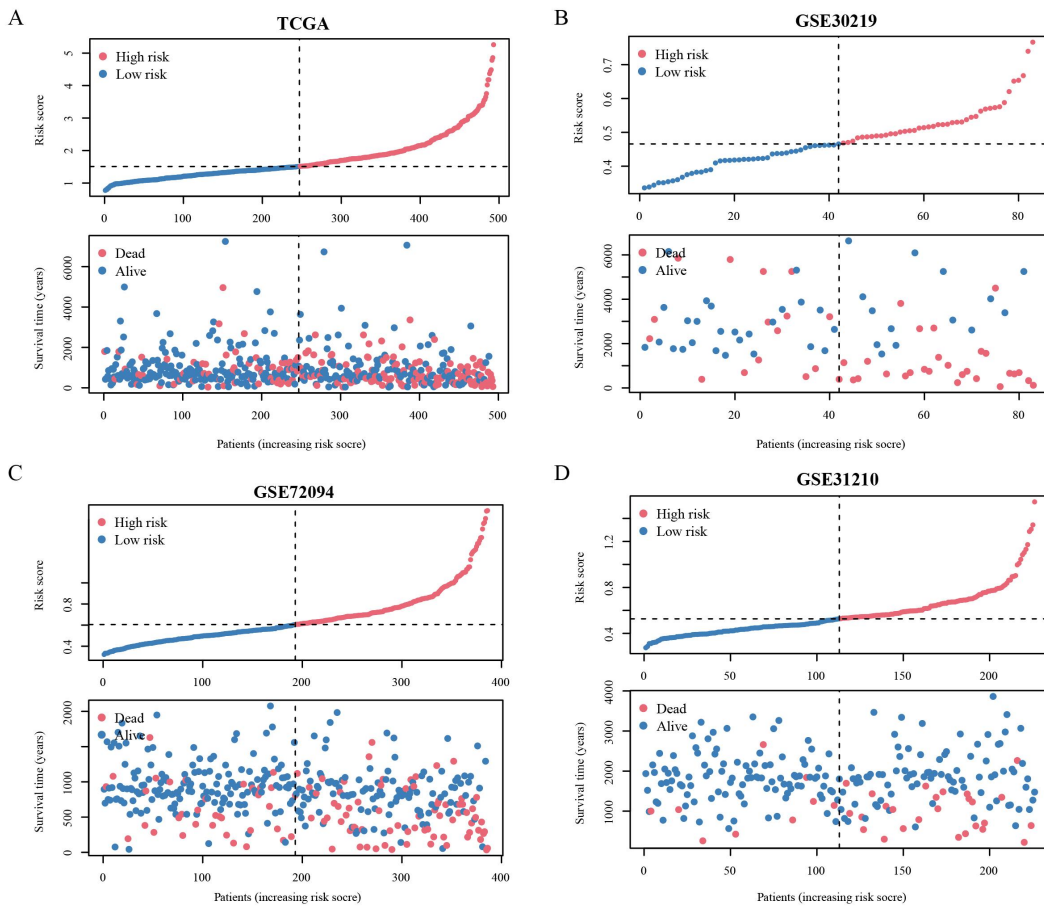


Figure S2 Risk score distributions in the TCGA-LUAD dataset (A) and three external validation datasets including GSE30219 (B), GSE72094 (C) and GSE31210 (D).

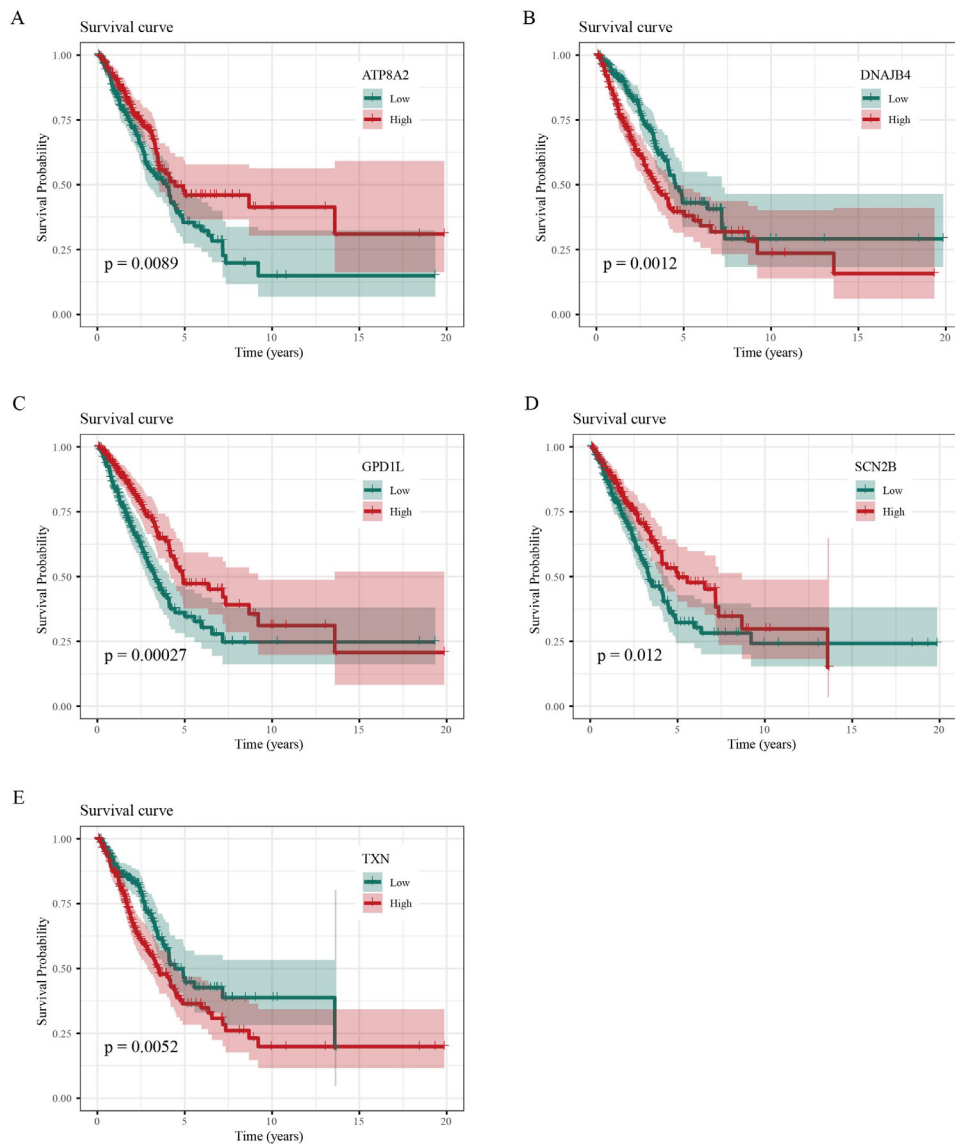


Figure S5 Overall survival KM analysis stratified by expression levels of five core genes: ATP8A2 (A), DNAJB4 (B), GPD1L (C), SCN2B (D), and TXN (E).

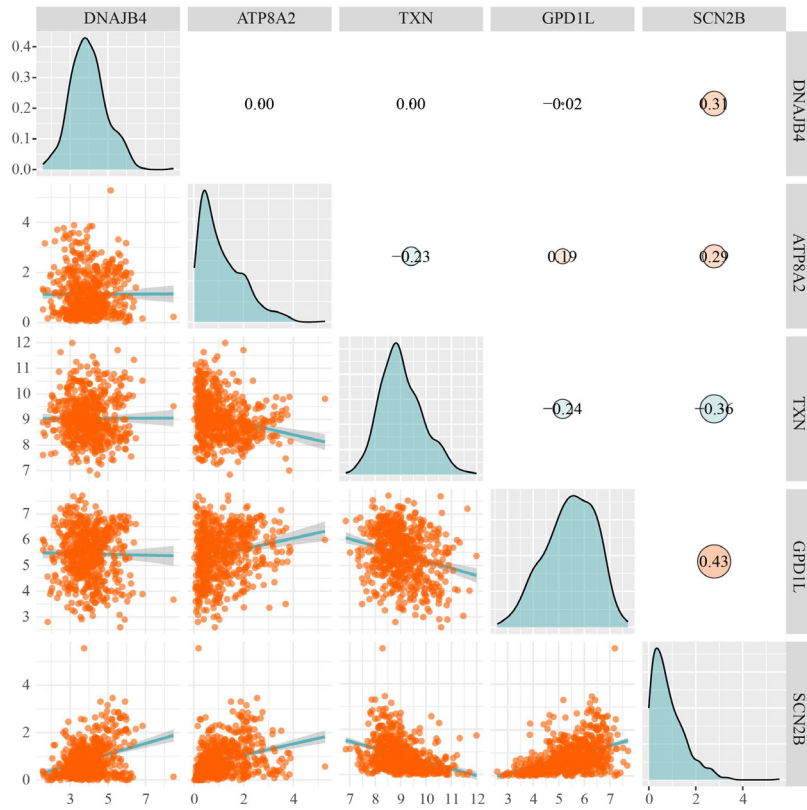


Figure S6 Core gene expression correlation diagram.

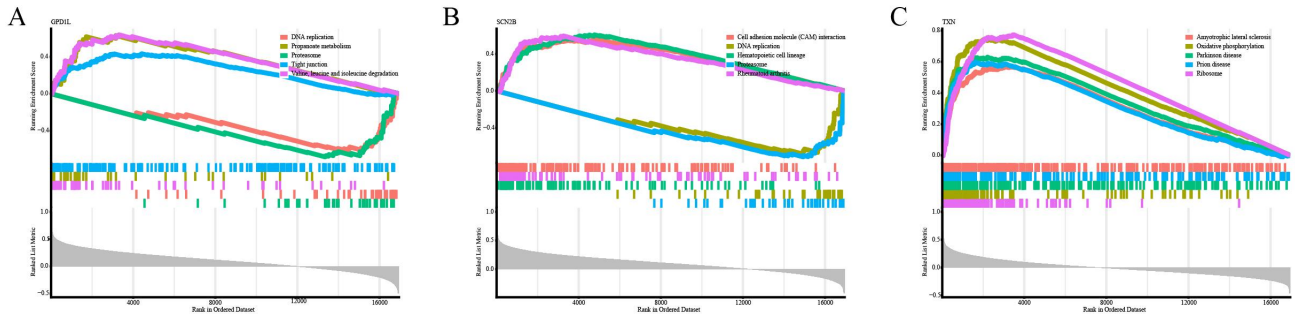


Figure S7 The pathways enriched in GSEA for GPD1L, SCN2B, and TXN.

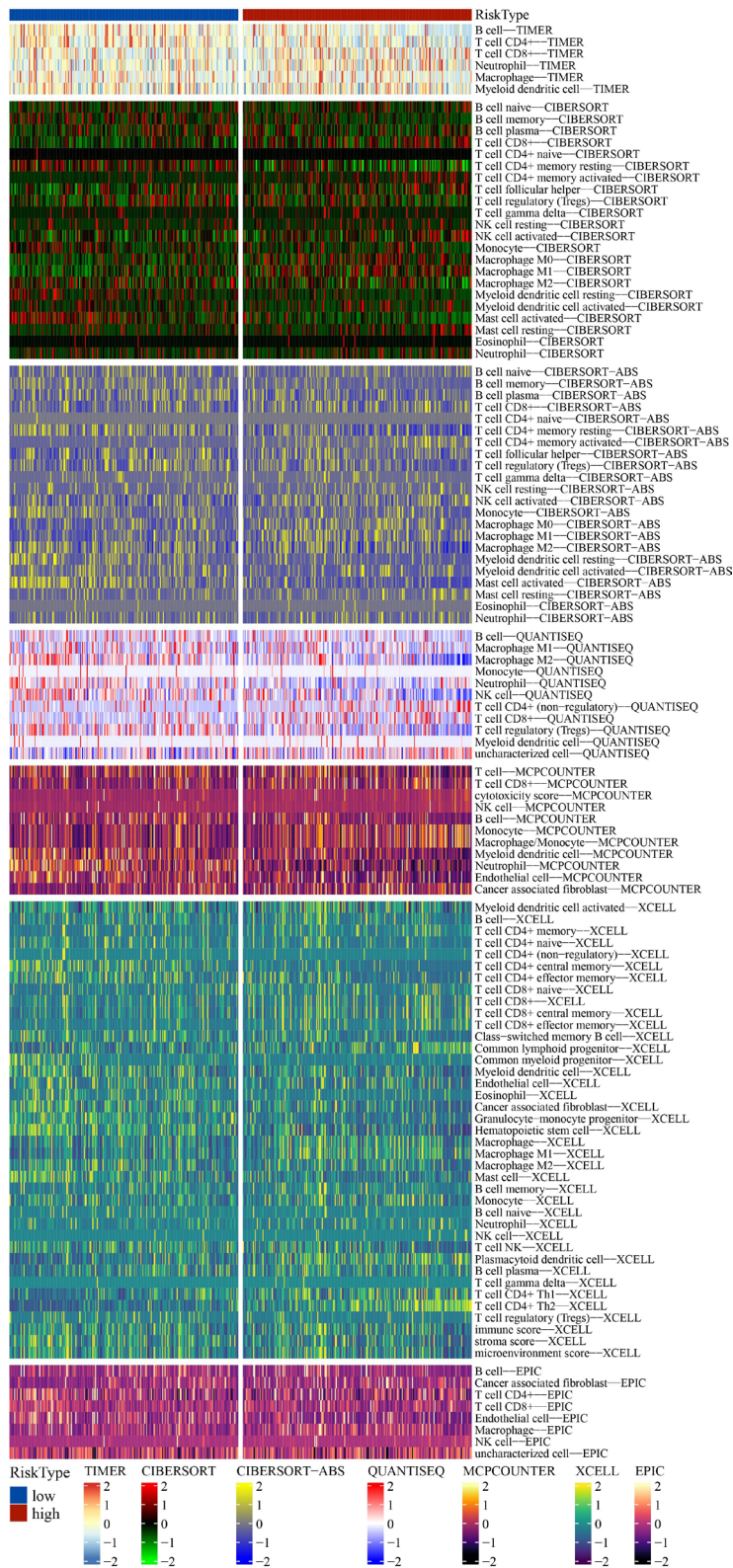


Figure S8 Immune-cell infiltration abundance under 8 algorithms including CIBERSORT, CIBERSORT-ABS, TIMER, xCell, MCPcounter, ESTIMATE, EPIC, and quanTIseq.

Table S1 Published prognostic models for LUAD

Model
PMID: 39507618
PMID: 36524120
PMID: 40474982
PMID: 39696439
PMID: 38965505
PMID: 39972012
PMID: 40092704
PMID: 40433361
PMID: 39735553
PMID: 39830760
PMID: 38370379
PMID: 39823156
PMID: 39551861
PMID: 41174058
PMID: 41174059
PMID: 41174060
PMID: 41174061
PMID: 41174062
PMID: 41174063
PMID: 41174064
PMID: 39520644
PMID: 40221448
PMID: 41160214
PMID: 39839650
PMID: 40530113
PMID: 35069695
PMID: 40530147
PMID: 41003841
PMID: 40950705
PMID: 40759816
PMID: 39438534
PMID: 38602568
PMID: 38223725

Table S2 A comprehensive quantitative report on the nomogram's calibration

Time	Intercept	Intercept_P	Slope	Slope_P
1-year	0.125188315236032	0.834058110560698	0.972192653507842	0.00652339751210056
3-year	-0.02646699	0.905653858478019	1.12470680264668	0.000800454054621777
5-year	0.100459504587396	0.599376417845147	0.888540905361915	0.00105472297415129