

Table S1 Dataset characteristics

Datasets	Experiment type	Platform	Tissue	Size	Subgroup size	Country	LINC01314 median expression value
GSE30219	Expression profiling by array	GPL570	Lung	307	293 lung tumor samples and 14 non-tumoral lung samples	France	5.286
GSE19188	Expression profiling by array	GPL570	Lung	165	91 tumor lung tissue and 65 adjacent normal lung tissue samples	Netherlands	-0.061
GSE31210	Expression profiling by array	GPL570	Lung	246	226 lung adenocarcinomas and 20 normal control	Japan	5.911
TCGA-LUAD	Expression profiling by high throughput sequencing	-	Lung	588	529 lung adenocarcinomas and 59 normal control	America	23

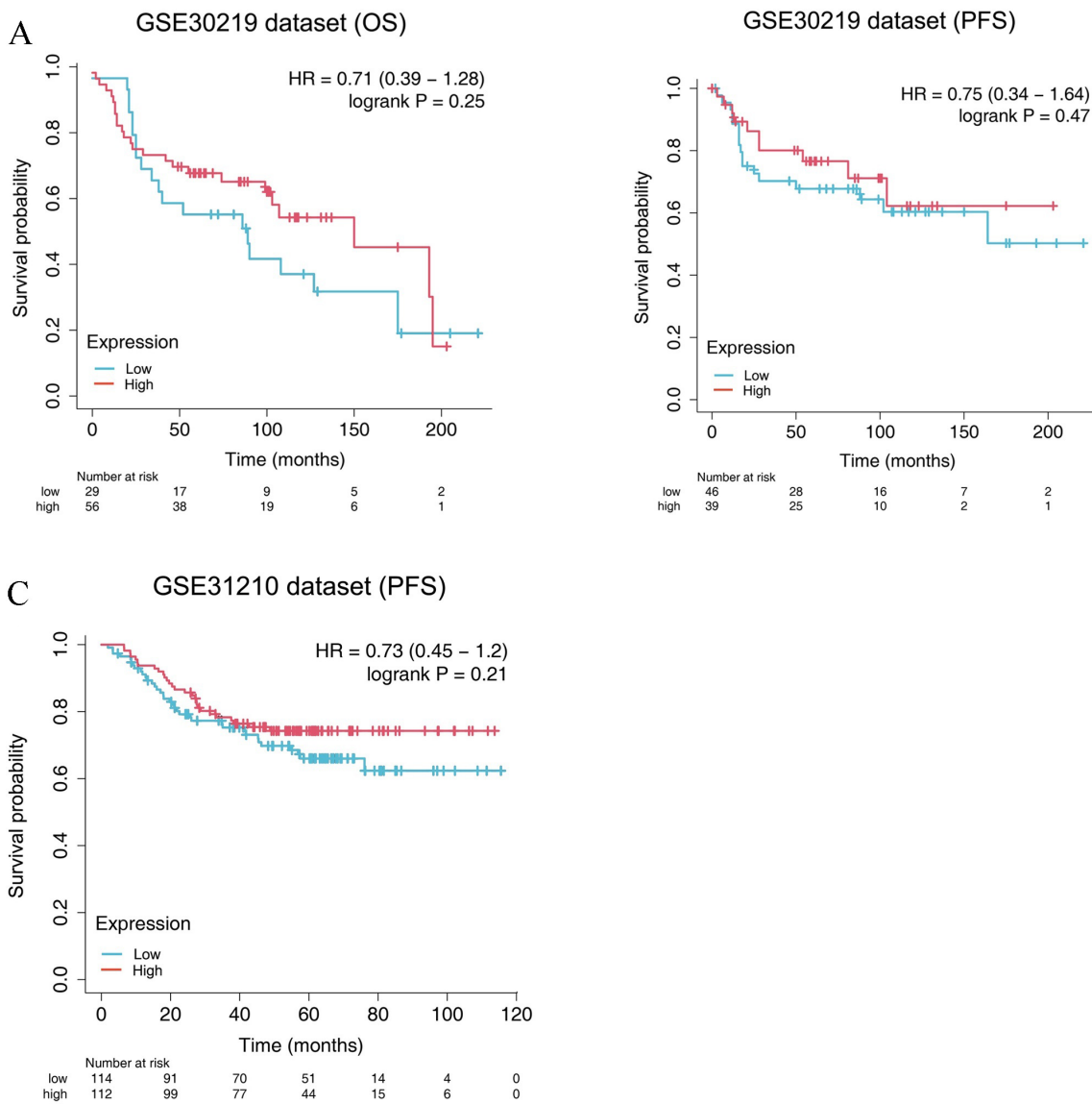


Figure S1 Supplementary Kaplan-Meier survival analyses of LINC01314 expression in GEO cohorts. Kaplan-Meier survival curves assessing the prognostic relevance of LINC01314 expression in two additional GEO datasets. (A,B) show OS and PFS for the GSE30219 cohort, respectively, while (C) presents overall survival for the GSE31210 cohort. GEO, Gene Expression Omnibus; LINC01314, long intergenic non-protein coding RNA 1314; OS, overall survival; PFS, progression-free survival.