

Table S1 Clinical characteristics and analysis results of patients in different groups in the 24 samples

Variables	Total (n=24)	Non-recurrence (n=15)	Recurrence (n=9)	P
Gender				0.285
Female	14 (58.33)	10 (66.67)	4 (44.44)	
Male	10 (41.67)	5 (33.33)	5 (55.56)	
Age (years)	45.71±14.95	47.40±15.05	42.89±15.23	0.486
Symptom of pain	8 (33.33)	4 (26.67)	1 (11.11)	0.364
Primary site				0.875
Minor salivary glands	8 (33.33)	5 (33.33)	3 (33.33)	
Sublingual gland	4 (16.67)	2 (13.33)	2 (22.22)	
Parotid gland	7 (29.25)	4 (26.67)	3 (33.33)	
Lacrimal gland	1 (4.17)	1 (6.67)	0 (0.00)	
Skull base	4 (16.67)	3 (20.00)	1 (11.11)	
T stage				0.167
T1	4 (16.67)	3 (20.00)	1 (11.11)	
T2	5 (20.83)	1 (6.67)	4 (44.44)	
T3	6 (25.00)	4 (26.67)	2 (22.22)	
T4	9 (37.50)	7 (46.67)	2 (22.22)	
N stage				0.703
N0	22 (91.67)	14 (93.33)	8 (88.89)	
N1	2 (8.33)	1 (6.67)	1 (11.11)	
M stage				0.259
M0	4 (16.67)	0 (0.00)	4 (44.44)	
Lymph node dissection				0.916
Yes	11 (45.83)	7 (46.67)	4 (44.44)	
No	13 (54.17)	8 (53.33)	5 (55.56)	
Radiotherapy				0.088
Yes	18 (75.00)	13 (86.67)	5 (55.56)	
No	6 (25.00)	2 (13.33)	4 (44.44)	
Radiotherapy modality				0.334
Conventional radiotherapy	18 (75.0)	10 (66.67)	8 (88.89)	
Intensity-modulated radiotherapy	3 (12.50)	3 (20.00)	0 (0.00)	
No radiotherapy	3 (12.50)	2 (13.33)	1 (11.11)	
Total radiotherapy dose	60.00 (60.00, 66.00)	60.00 (60.00, 68.00)	58.00 (54.00, 60.00)	0.736
Chemotherapy				0.586
Yes	9 (37.50)	5 (33.33)	4 (44.44)	
No	15 (62.50)	10 (66.67)	5 (55.56)	
Targeted therapy				0.703
Yes	2 (8.33)	1 (6.67)	1 (11.11)	
No	22 (91.67)	14 (93.33)	8 (88.89)	
Particle therapy				0.187
Yes	1 (4.17)	0 (0.00)	1 (11.11)	
No	23 (95.83)	15 (100.00)	8 (88.89)	
Pulmonary metastasis				0.224
Yes	18 (75.00)	5 (33.33)	1 (11.11)	
No	6 (25.00)	10 (66.67)	8 (88.89)	
Pathological grade				0.285
Solid pattern ≥30%	14 (58.33)	10 (66.67)	4 (44.44)	
Solid pattern <30%	10 (41.67)	5 (33.33)	5 (55.56)	
High-grade transformation				0.873
Yes	3 (12.50)	2 (13.33)	1 (11.11)	
No	21 (87.50)	13 (86.67)	8 (88.89)	
Neural invasion				0.916
Yes	11 (45.83)	8 (53.33)	5 (55.56)	
No	13 (54.17)	7 (46.67)	4 (44.44)	
Vascular invasion				0.057
Yes	2 (8.33)	0 (0.00)	2 (22.22)	
No	22 (91.67)	15 (100.00)	7 (77.78)	
Ki-67	20.00 (10.00, 30.00)	20.00 (10.00, 30.00)	25.00 (10.00, 40.00)	

Categorical data are presented as frequency (percentage). Continuous variables are presented as mean ± SD or median (IQR) based on their distribution. The radiotherapy dose and Ki-67 index were both described by median (IQR), and age was expressed as mean ± SD. IQR, interquartile range; M, metastasis; N, node; SD, standard deviation; T, tumor.

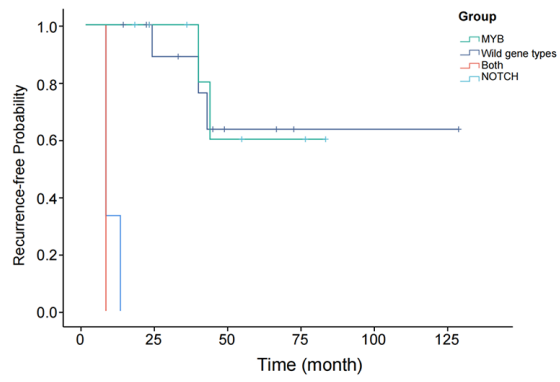


Figure S1 Recurrence rate curves of various genotypes in the 24 samples.