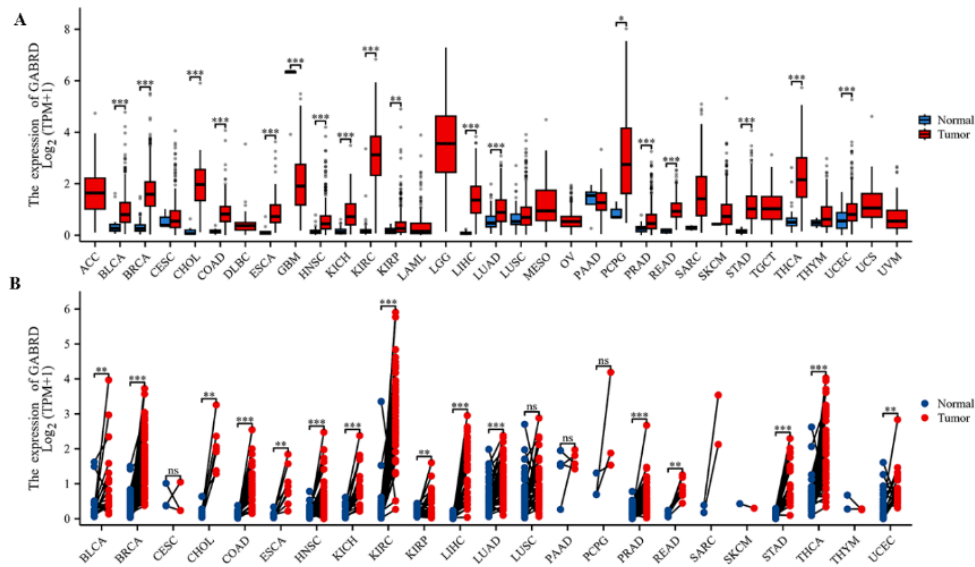
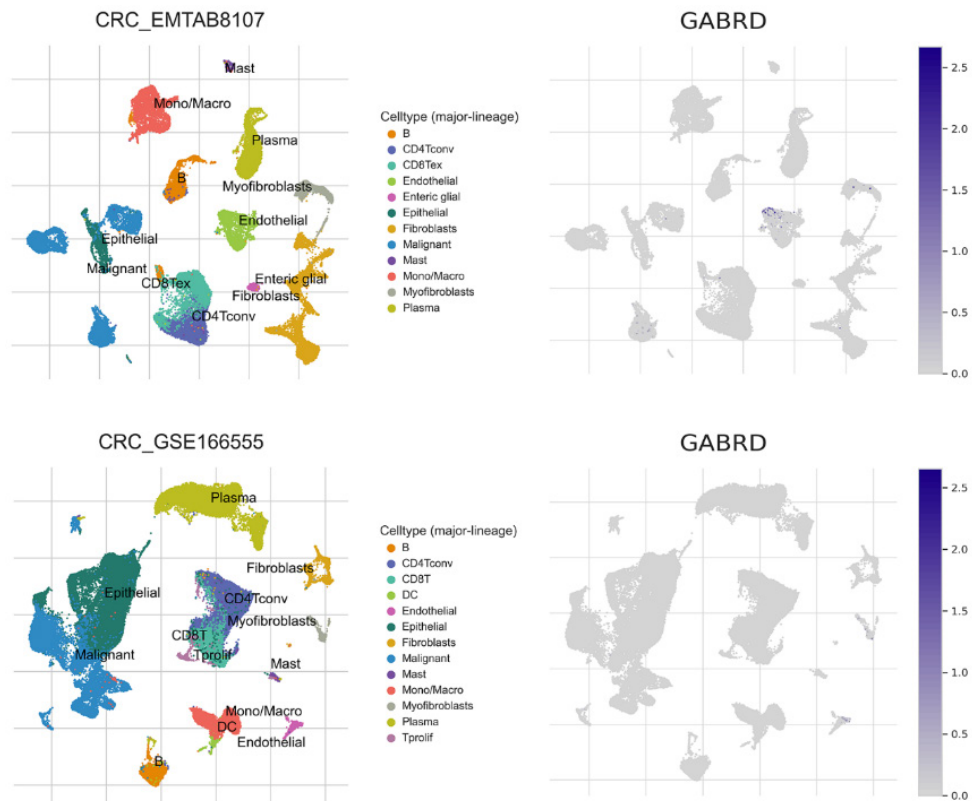


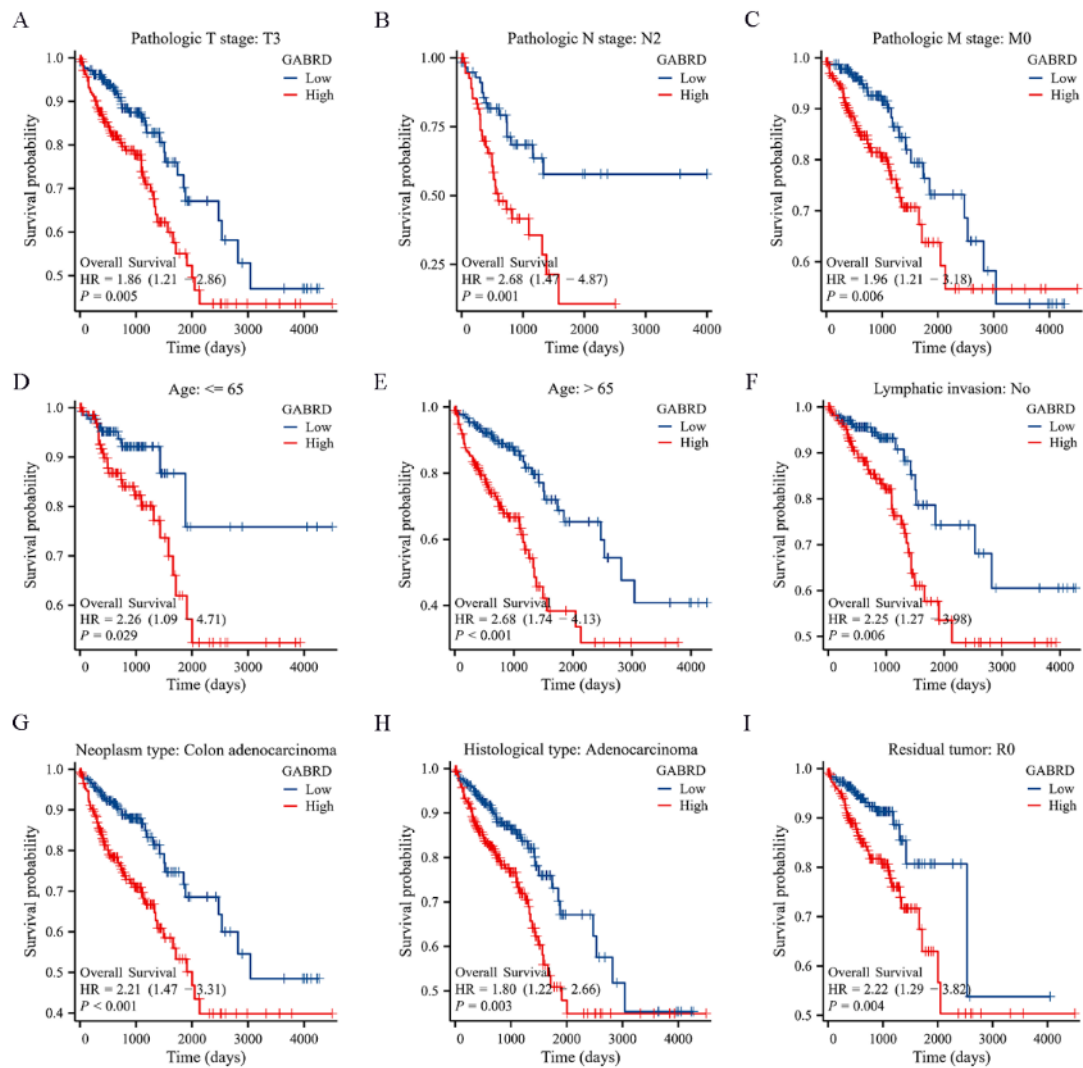
**Figure S1** *GABRD* exhibited the best diagnostic value. ROC curve analysis of the nine genes revealed that *GABRD* possessed the highest AUC.



**Figure S2** High expression level of GABRD in pan-cancer. GABRD expression in (A) unpaired and (B) paired samples from the TCGA database.



**Figure S3** Single-cell atlas of GABRD expression. Single-cell data from two distinct sample sources within the TISCH database collectively indicated predominant expression of GABRD in Endothelial cells, Myofibroblasts cells, and malignant cells.



**Figure S4** The association between OS and the expression levels of GABRD in various clinical subgroups of COADREAD.

**Table S1** The clinical baseline information table about the association between the expression of *GABRD* and different clinicopathological characteristics of COADREAD patients from the GSE28000 dataset

Characteristics	High expression of <i>GABRD</i> (n=41)	Low expression of <i>GABRD</i> (n=40)	P value
Gender, n (%)			0.318
Female	23 (28.4)	18 (22.2)	
Male	18 (22.2)	22 (27.2)	
Age, years, mean $\pm$ SD	64.634 $\pm$ 13.59	63.9 $\pm$ 16.102	0.825
Race, n (%)			0.149
Black	24 (29.6)	17 (21)	
White	17 (21)	23 (28.4)	

**Table S2** The clinical baseline information table about the association between the expression of *GABRD* and different clinicopathological characteristics of COADREAD patients from the GSE44076 dataset

Characteristics	High expression of <i>GABRD</i> (n=49)	Low expression of <i>GABRD</i> (n=49)	P value
Pathologic stage, n (%)			0.268
IIB	6 (6.1)	2 (2)	
IIA	43 (43.9)	47 (48)	
Age, years, mean $\pm$ SD	70.592 $\pm$ 8.965	70.49 $\pm$ 9.17	0.956
gender, n (%)			0.258
Male	38 (38.8)	33 (33.7)	
Female	11 (11.2)	16 (16.3)	
location, n (%)			0.097
Left	34 (34.7)	26 (26.5)	
Right	15 (15.3)	23 (23.5)	