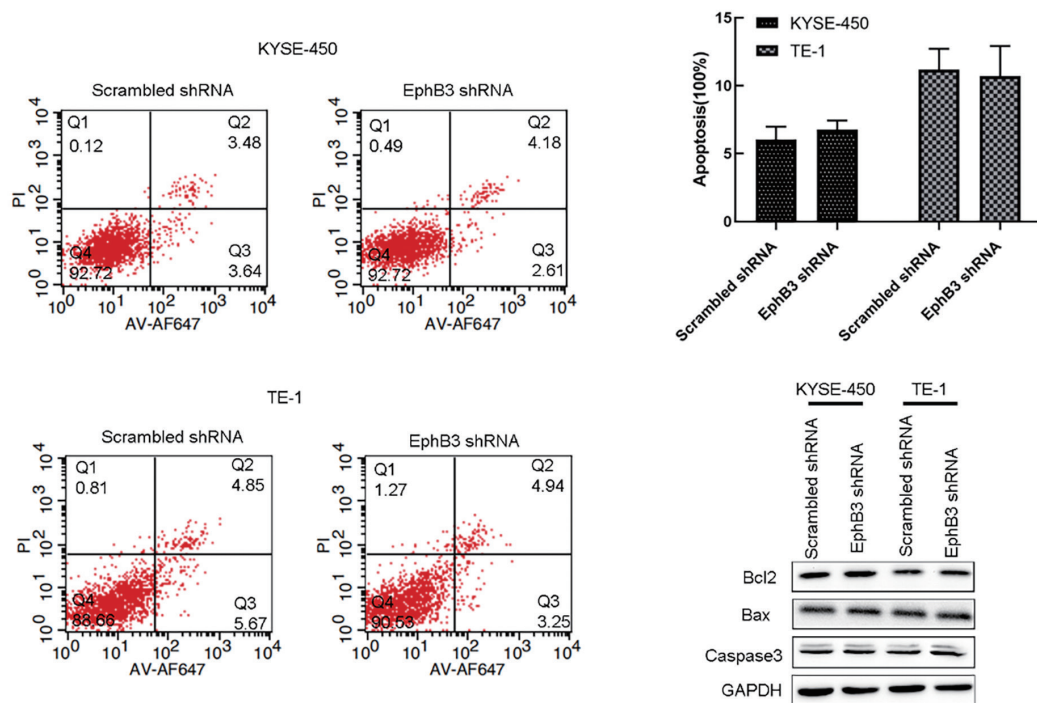


**Table S1** The EphB3 targeting shRNAs and scrambled shRNAs sequences

Name	Sequence
sh-Scrambled (sense)	GATCCGTTCTCCGAACGTGTCACGTTTCAAGAGAACGTGACACGTTCCGGAGAACCTTTTTTG
sh-Scrambled (anti-sense)	AATTCAAAAAAGTTCCTCCGAACGTGTCACGTTCTCTTGAAAACGTGACACGTTCCGGAGAACG
shEphB3-1(shRNA1) sense	GATCCGGTCCCAGATTACACAACCTTTTTCAAGAGAAAAGGTTGTGTAATCTGGGACCTTTTTTG
shEphB3-1(shRNA1) anti-sense	AATTCAAAAAAGGTCCCAGATTACACAACCTTTTTCTTGTAAAAGGTTGTGTAATCTGGGACCG
shEphB3-2(shRNA2) sense	GATCCGGCGAGTCAAGCCAGAACAATTTTCAAGAGAAATTGTTCTGGCTTGACTCGCCTTTTTTG
shEphB3-2(shRNA2) anti-sense	AATTCAAAAAAGGCGAGTCAAGCCAGAACAATTTCTTGTAAAATTGTTCTGGCTTGACTCGCCG



**Figure S1** EphB3 knockdown had no significant effects on apoptosis in KYSE-450 and TE-1 cells. (A) The apoptosis percentage was detected using flow cytometry and no statistical differences were found between KYSE-450 and TE-1 cells after EphB3 gene knockdown ( $P=0.33$  and  $P=0.76$  respectively); (B) protein expression of Bcl2, Bax and Caspase 3 were detected by western blotting.