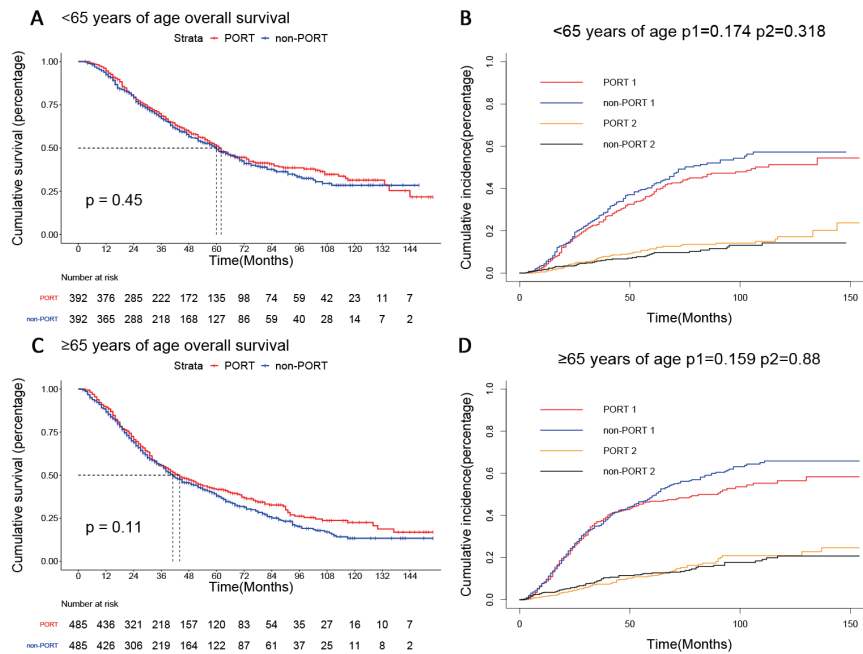
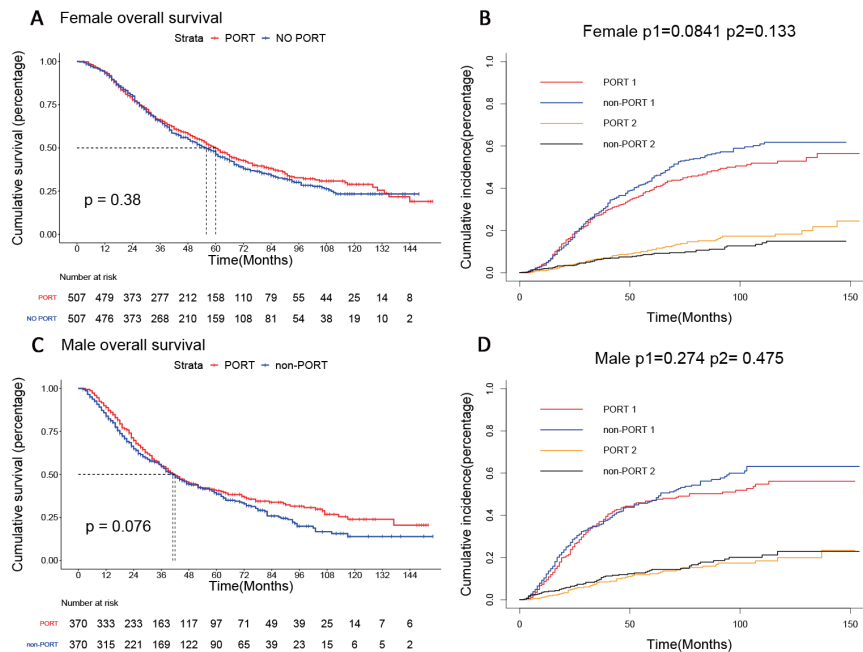


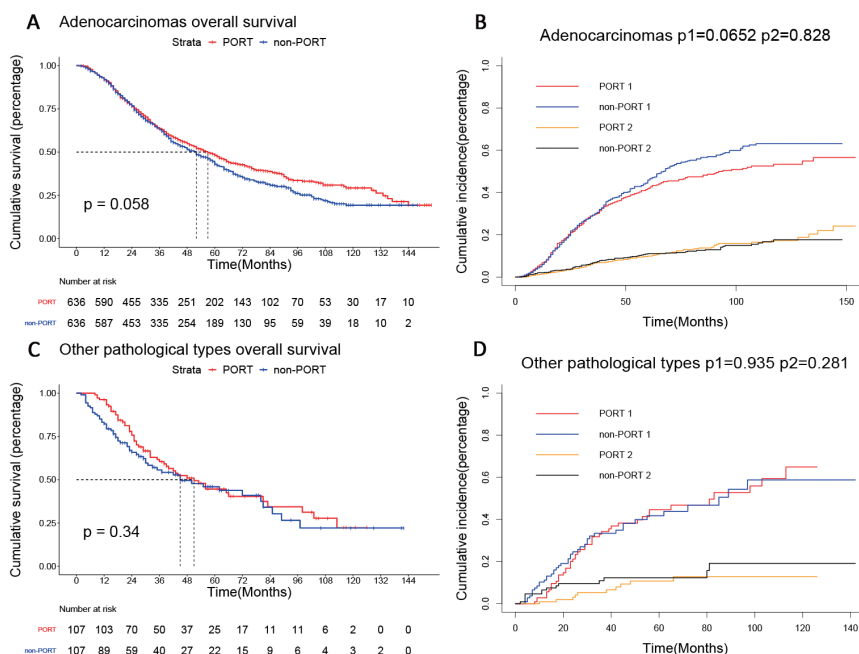
**Figure S1** Overall survival and cause-specific mortality between patients with PORT group and non-PORT group in Grade III-IV, T1 and LNR <0.31 after PSM. (A) the overall survival between PORT group and non-PORT group in Grade III-IV patients; (B) the cause-specific mortality between PORT group and non-PORT group in Grade III-IV patients; (C) the overall survival between PORT group and non-PORT group in T1 patients; (D) the cause-specific mortality between PORT group and non-PORT group in T1 patients; (E) the overall survival between PORT group and non-PORT group in LNR <0.31 patients; (F) the cause-specific mortality between PORT group and non-PORT group in LNR <0.31 patients. PORT, postoperative radiotherapy; PSM, propensity score matching; LNR, lymph node ratio.



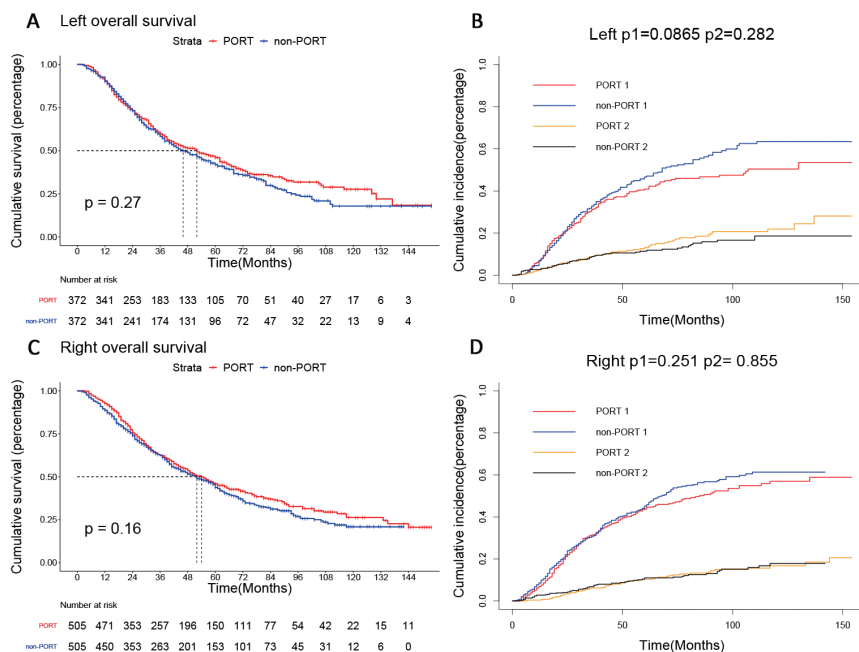
**Figure S2** Overall survival and cause-specific mortality between patients with PORT group and non-PORT group in <65 years of age and ≥65 years of age after PSM. (A) the overall survival between patients with PORT group and non-PORT group in <65 years of age; (B) the cause-specific mortality between PORT group and non-PORT group in <65 years of age; (C) the overall survival between PORT group and non-PORT group in ≥65 years of age; (D) the cause-specific mortality between PORT group and non-PORT group in ≥65 years of age. PORT, postoperative radiotherapy; PSM, propensity score matching.



**Figure S3** Overall survival and cause-specific mortality between patients with PORT group and non-PORT group in female and male after PSM. (A) the overall survival between patients with PORT group and non-PORT group in female; (B) the cause-specific mortality between PORT group and non-PORT group in female; (C) the overall survival between PORT group and non-PORT group in male; (D) the cause-specific mortality between PORT group and non-PORT group in male. PORT, postoperative radiotherapy; PSM, propensity score matching.



**Figure S4** Overall survival and cause-specific mortality between patients with PORT group and non-PORT group in adenocarcinomas and other pathological types after PSM. (A) the overall survival between patients with PORT group and non-PORT group in adenocarcinomas; (B) the cause-specific mortality between PORT group and non-PORT group in adenocarcinomas; (C) the overall survival between PORT group and non-PORT group in other pathological types; (D) the cause-specific mortality between PORT group and non-PORT group in other pathological types. PORT, postoperative radiotherapy; PSM, propensity score matching.



**Figure S5** Overall survival and cause-specific mortality between patients with PORT group and non-PORT group in left and right lung after PSM. (A) the overall survival between patients with PORT group and non-PORT group in left lung; (B) the cause-specific mortality between PORT group and non-PORT group in left lung; (C) the overall survival between PORT group and non-PORT group in right lung; (D) the cause-specific mortality between PORT group and non-PORT group in right lung. PORT, postoperative radiotherapy; PSM, propensity score matching.