

Appendix 1

A. Detailed search terms

(A1) Search terms in PubMed

#1

"Glycine Hydroxymethyltransferase"[Mesh] OR "SHMT protein"

#2

"Prognosis" [Mesh] OR "prognoses" OR "survival" OR "prognostic factors"

#3

"Neoplasms"[Mesh] OR "tumour" OR "cancer" OR ""neoplasm"

#4

#1 AND #2 AND #3

(A2) Search terms in Embase

#1

'glycine hydroxymethyltransferase'/exp

#2

'shmt protein'

#3

'shmt'

#4

'serine hydroxymethyltransferase'

#5

'shmt-1'

#6

'shmt-2'

#7

'prognosis'/exp

#8

'survival'

#9

'prognostic factors'

#10

'neoplasm'/exp

#11

'tumour'

#12

'cancer'

#13

'neoplasms'

#14

#1 OR #2 OR #3 OR #4 OR #5 OR #6

#15

#7 OR #8 OR #9

#16

#10 OR #11 OR #12 OR #13

#17

#14 AND #15 AND #16

(A3) Search terms in Web of Science

- #1
TS = ("Prognosis" OR "survival" OR "prognostic factors")
- #2
AK = ("Prognosis" OR "survival" OR "prognostic factors")
- #3
TS = ("Glycine Hydroxymethyltransferase" OR "SHMT protein" OR "SHMT" OR "serine hydroxymethyltransferase" OR "SHMT-1" OR "SHMT-2")
- #4
AK = ("Glycine Hydroxymethyltransferase" OR "SHMT protein" OR "SHMT" OR "serine hydroxymethyltransferase" OR "SHMT-1" OR "SHMT-2")
- #5
TS = ("Neoplasms" OR "tumour" OR "cancer" OR "neoplasm" OR "tumor")
- #6
AK = ("Neoplasms" OR "tumour" OR "cancer" OR "neoplasm" OR "tumor")
- #7
#2 OR #1
- #8
#4 OR #3
- #9
#6 OR #5
- #10
#9 AND #8 AND #7

(A4) Search terms in Cochrane Central Register of Controlled Trials (CENTRAL)

- #1
(Glycine Hydroxymethyltransferase):ti,ab,kw (Word variations have been searched)
- #2
SHMT protein
- #3
Prognosis
- #4
survival
- #5
prognostic factors
- #6
Neoplasms
- #7
cancer
- #8
tumour
- #9
#1 OR #2
- #10
#3 OR #4 OR #5
- #11
#7 OR #9 OR #9
- #12
#9 AND #10 AND #11

B. Relevant forest plots of the clinicopathological characteristics associated with SHMT2 expression

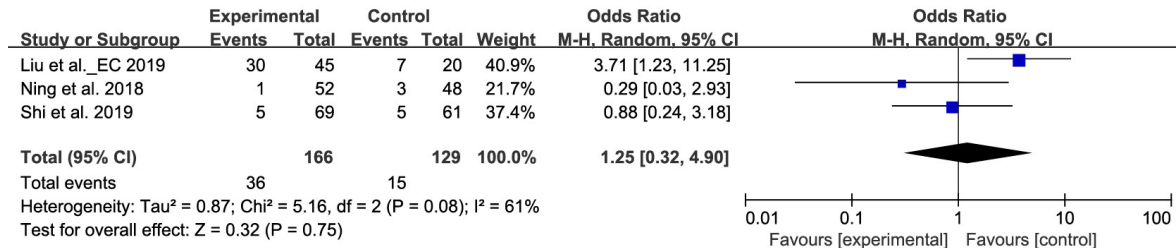


Figure S1 The forest plots of distant metastasis.

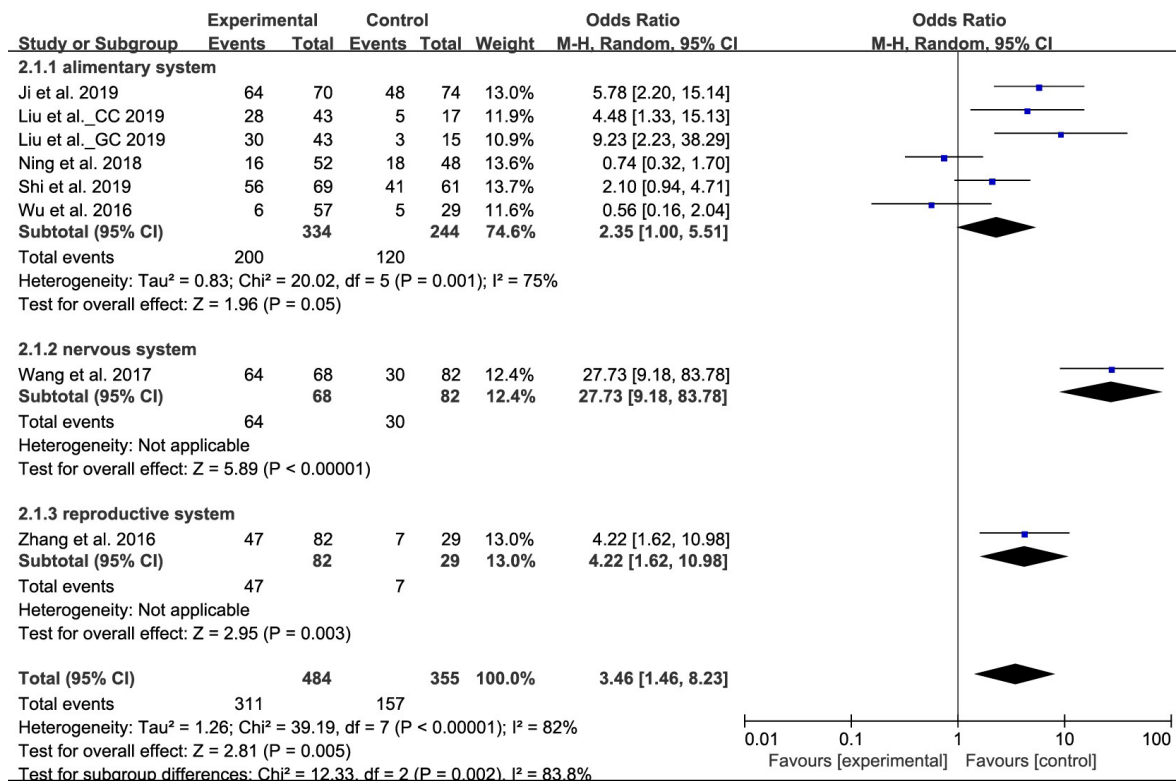


Figure S2 The forest plots of histopathological grade.

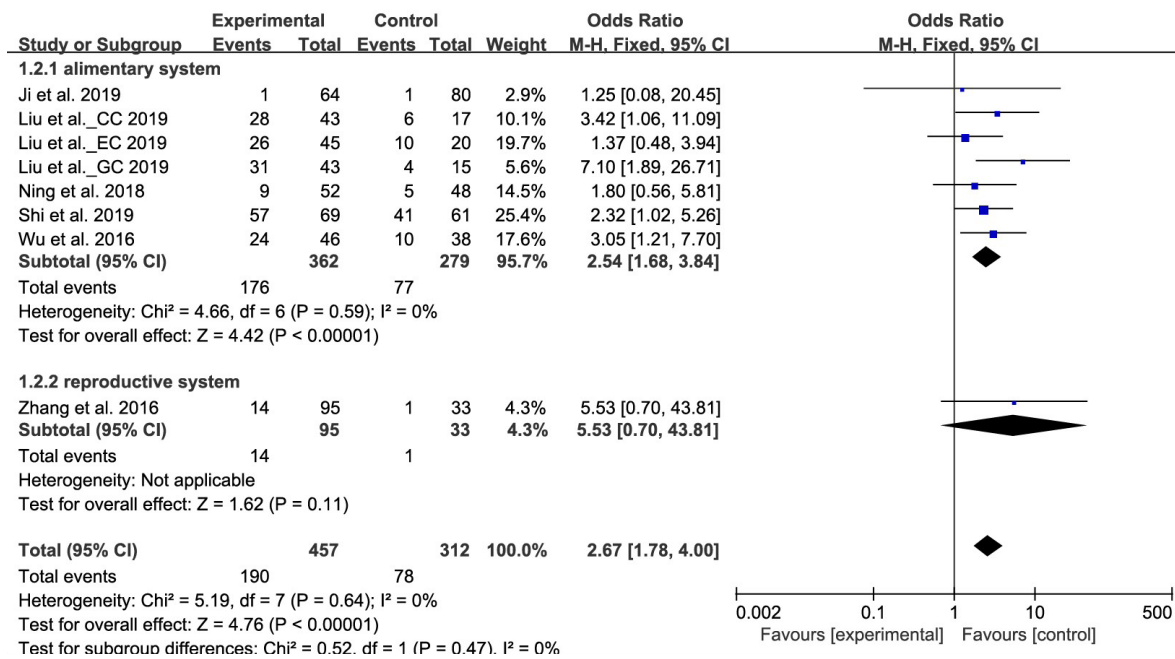


Figure S3 The forest plots of lymphatic invasion.

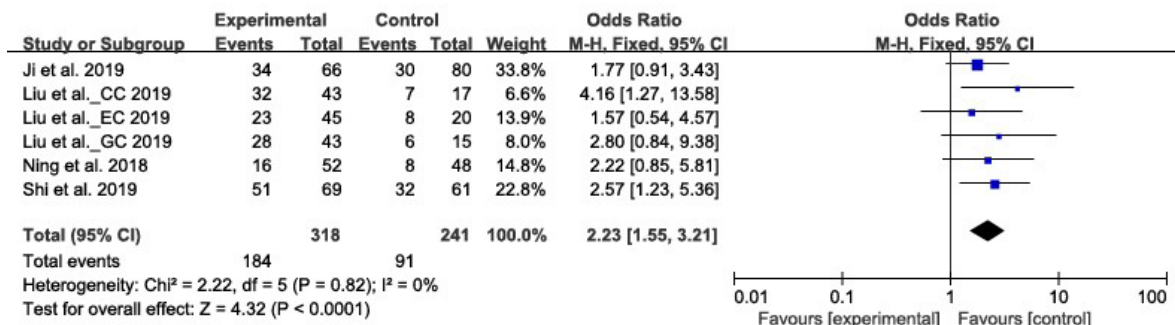


Figure S4 The forest plots of TNM grade.