

Supplementary

Table S1 Baseline characteristics of patients with T cell lymphoma

Characteristics	CD3 ⁺ CD7 ⁻ ≥1.035% (n=24)	CD3 ⁺ CD7 ⁻ <1.035% (n=61)	P value
Mean WBC count (10 ⁹ /L)	6.87	7.33	0.679
Mean RBC count (10 ¹² /L)	3.78	4.16	0.024
Mean hemoglobin (g/L)	116.0	125.4	0.059
Mean platelets count (10 ⁹ /L)	198.5	216.4	0.391
Mean prothrombin time (s)	13.92	13.68	0.393
Mean fibrinogen (g/L)	3.667	3.771	0.800
Mean APTT (s)	40.03	40.40	0.824
Mean thrombin time (s)	16.9	17.3	0.458
Mean D-dimer (mg/L)	1.16	1.98	0.143
Mean IgG (g/L)	13.9	14.2	0.886
Mean IgA (g/L)	2.78	3.10	0.438
Mean IgM (g/L)	1.63	1.48	0.737
Mean LDH (U/L)	439.5	501.0	0.676
Mean β2-microglobulin (μg/mL)	3.36	3.67	0.570
Mean ferritin (μg/L)	1,165.8	1,481.4	0.721

WBC, white blood Cell; RBC, red blood cell; APTT, activated partial thromboplastin time; LDH, lactate dehydrogenase.

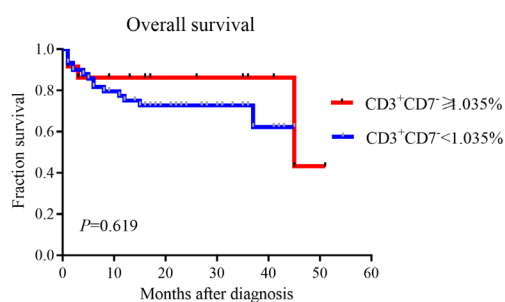


Figure S1 There was no difference in the overall survival in two groups between CD3⁺CD7⁻ ≥1.035% and CD3⁺CD7⁻ <1.035%. The log-rank method was used to test for differences in overall survival.

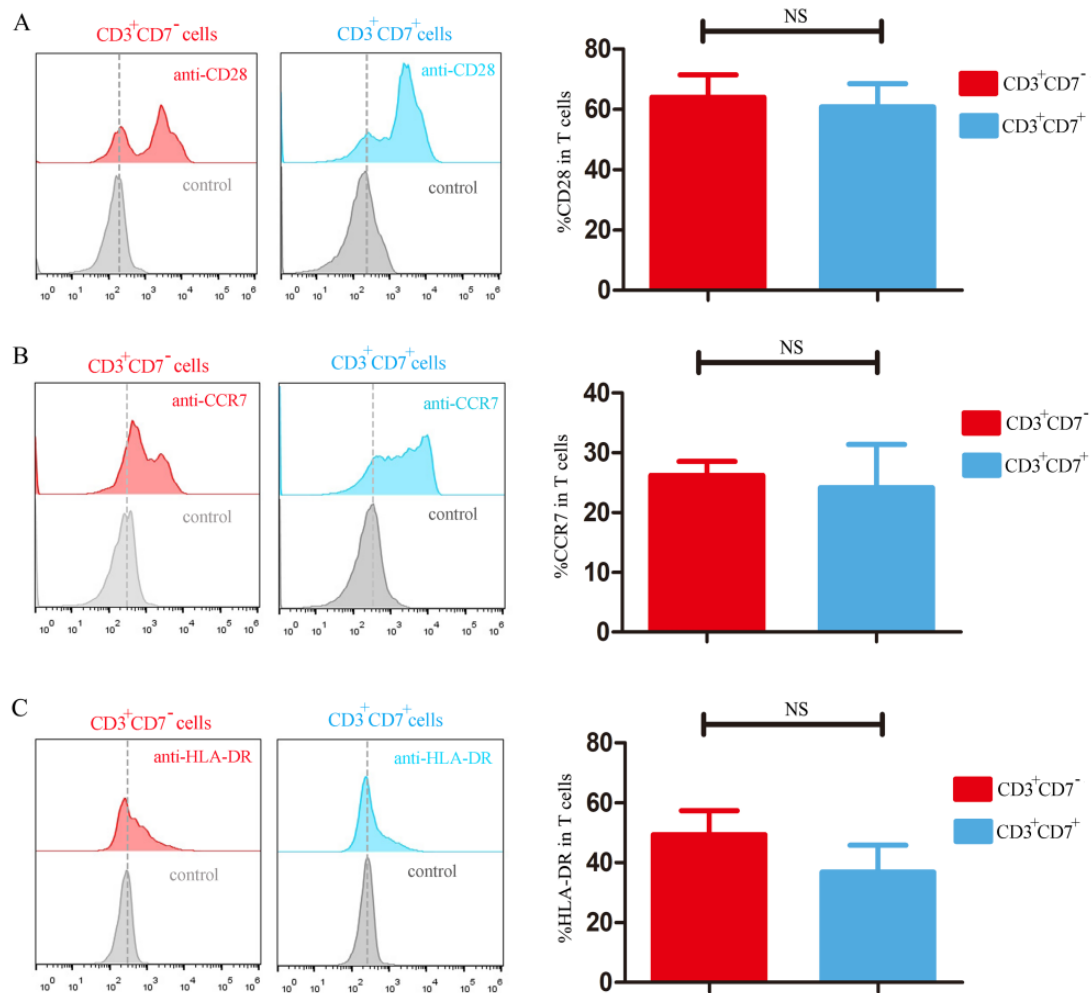


Figure S2 The expression of CD28 (A), CCR7 (B) and HLA-DR (C) in CD3⁺CD7⁻ T cells and CD3⁺CD7⁺ T cells in T-NHL patients with BM invasion. CCR7, C-C motif chemokine receptor 7; HLA-DR, human leucocyte antigen DR; T-NHL, T-cell non-Hodgkin's lymphoma. CCR7, C-C motif chemokine receptor 7; HLA-DR, human leucocyte antigen DR; NS, not significant.