

Figure S1 The proportion of CD4+/CD8+ T cell subsets (T_{CM} cells, Naive cells, T_{EM} cells and T_{EMRA} cells) in PBMCs after co-cultured with A549 cells irradiated at various doses with FFF high-dose rate or conventional dose rate. (A) Proportion of CD4+ T cell subsets in PBMCs after co-cultured with A549 cells irradiated at 400 MU/min. (B) Proportion of CD4+ T cell subsets in PBMCs after co-cultured with A549 cells irradiated at 1,000 MU/min. (C) Proportion of CD8+ T cell subsets in PBMCs after co-cultured with A549 cells irradiated at 400 MU/min. (D) Proportion of CD8+ T cell subsets in PBMCs after co-cultured with A549 cells irradiated at 1,000 MU/min. PBMC, peripheral blood mononuclear cell; FFF, flattening filter-free; NK, natural killer.

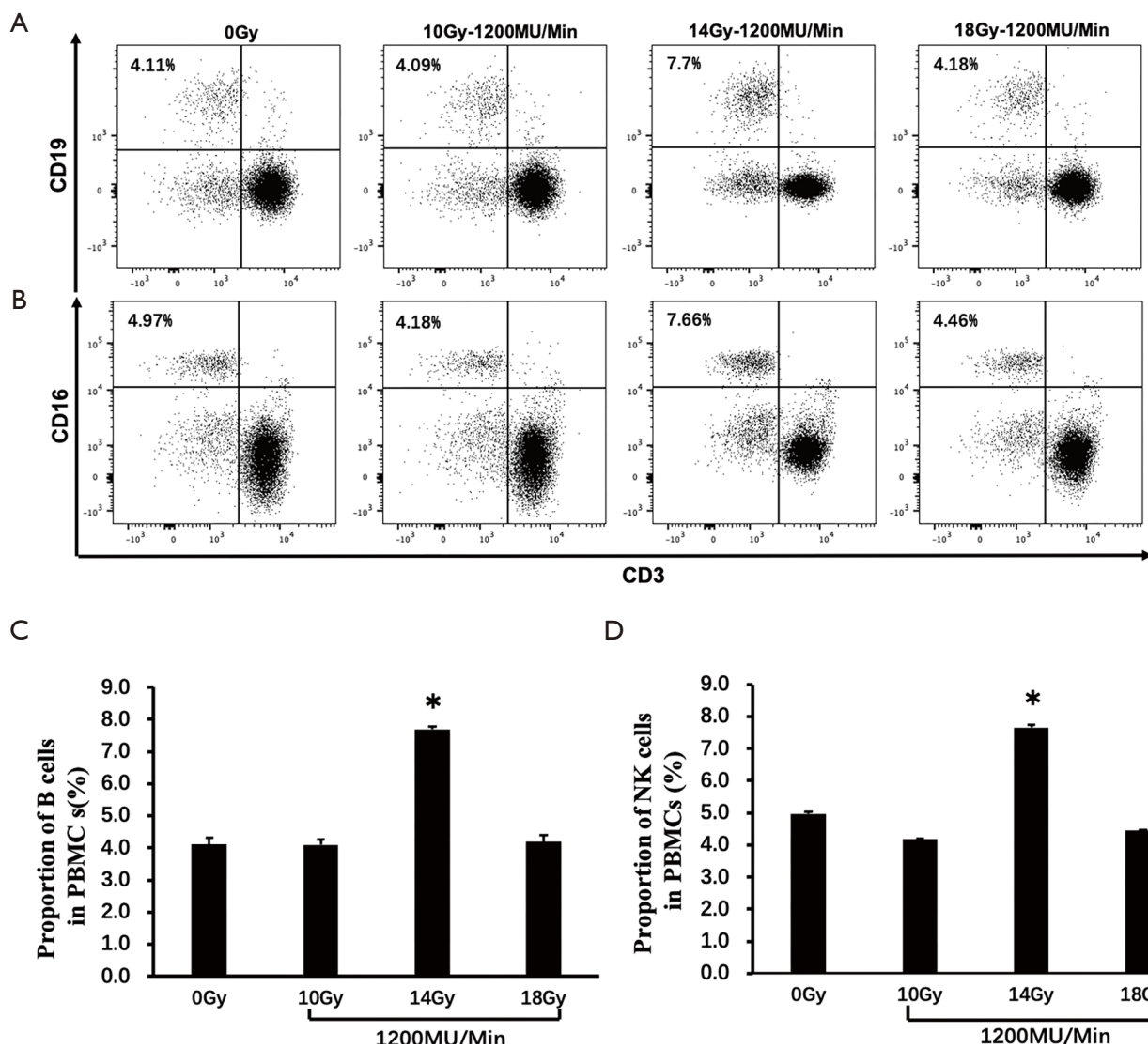


Figure S2 The polarization of B and NK cell subsets in PBMCs after co-culture with A549 cells irradiated at various doses with FFF high-dose rate (1,200 MU/min). (A,C) Proportion of B cells in PBMCs after co-cultured with A549 cells irradiated at 1,200 MU/min. (B,D) Proportion of NK cells in PBMCs after co-cultured with A549 cells irradiated at 1,200 MU/min. *P value <0.05. PBMC, peripheral blood mononuclear cell; FFF, flattening filter-free; NK, natural killer.

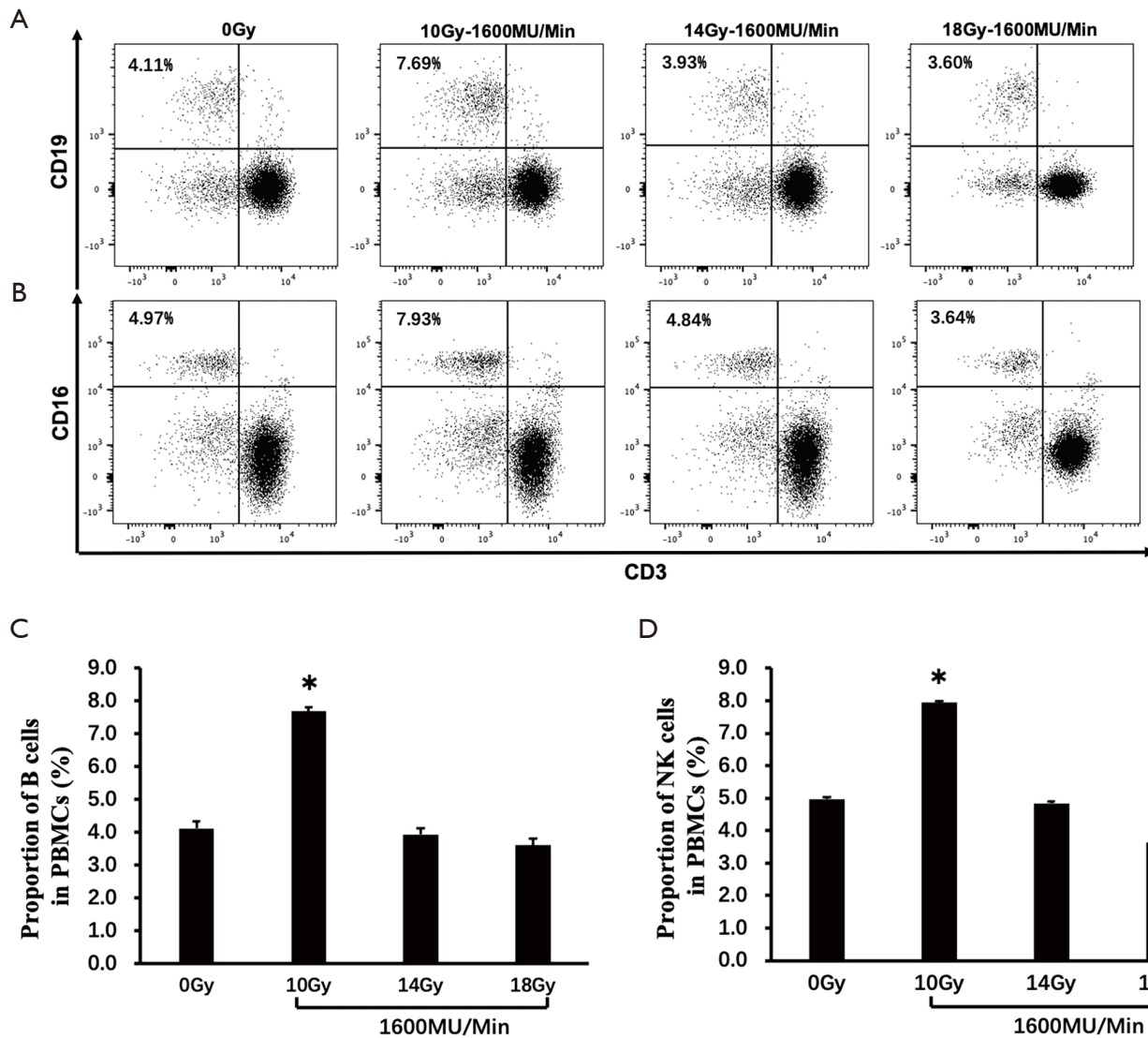


Figure S3 The polarization of B and NK cell subsets in PBMCs after co-culture with A549 cells irradiated at various doses with FFF high-dose rate (1,600 MU/min). (A,C) Proportion of B cells in PBMC after co-cultured with A549 cells irradiated at 1,600 MU/min. (B,D) Proportion of NK cells in PBMCs after co-cultured with A549 cells irradiated at 1,600 MU/min. *P value <0.05. PBMC, peripheral blood mononuclear cell; FFF, flattening filter-free; NK, natural killer.