

Table S1 Univariate and multivariate analyses of the unmatched cohort for OS

Variables	Univariate analysis		Multivariate analysis	
	HR (95% CI)	P value	HR (95% CI)	P value
Race: Black vs. White	1.006 (0.834–1.214)	0.947	0.947 (0.784–1.144)	0.571
Race: Other vs. White	0.394 (0.324–0.478)	<0.001	0.633 (0.518–0.775)	<0.001
FIGO: IIB–IVB vs. IA1–IIA2	13.327 (10.613–16.735)	<0.001	5.996 (4.43–8.115)	<0.001
Primary site: other vs. cervix uteri	0.684 (0.579–0.809)	<0.001	0.849 (0.715–1.007)	0.06
Radiation: yes vs. no	0.9 (0.735–1.101)	0.306	1.481 (1.122–1.954)	0.005
Chemotherapy: yes vs. no	3.751 (3.133–4.49)	<0.001	0.561 (0.454–0.693)	<0.001
Regional nodes: 0–18 vs. 0	0.24 (0.19–0.304)	<0.001	0.507 (0.357–0.72)	<0.001
Regional nodes: 19–90 vs. 0	0.124 (0.088–0.176)	<0.001	0.271 (0.171–0.43)	<0.001
Positive nodes: 0–2 vs. 0	1.307 (0.919–1.86)	0.136	1.507 (0.938–2.421)	0.09
Positive nodes: 3–23 vs. 0	2.245 (1.524–3.307)	<0.001	2.385 (1.436–3.96)	<0.001
Marital: married vs. single/unmarried	1.254 (1.076–1.461)	0.004	1.005 (0.858–1.178)	0.949
Marital: divorced/unknown vs. single/unmarried	1.43 (1.246–1.641)	<0.001	1.14 (0.99–1.313)	0.068
Surgery: yes vs. no	0.119 (0.099–0.143)	<0.001	0.428 (0.321–0.569)	<0.001
Age category: 40–44 vs. 21–39	1.129 (0.76–1.678)	0.548	1.029 (0.689–1.536)	0.89
Age category: 45–59 vs. 21–39	2.385 (1.782–3.193)	<0.001	1.51 (1.116–2.043)	0.007
Age category: 60–97 vs. 21–39	7.311 (5.568–9.6)	<0.001	2.912 (2.171–3.905)	<0.001
Tumor type: EC vs. AC	0.786 (0.589–1.048)	0.1	0.838 (0.624–1.124)	0.238

AC, ordinary cervical adenocarcinoma; EC, cervical endometrioid adenocarcinoma; FIGO, Federation International of Gynecology and Obstetrics; OS, overall survival.

Table S2 Univariate and multivariate analyses of the unmatched cohort for DSS

Variables	Univariate analysis		Multivariate analysis	
	HR (95% CI)	P value	HR (95% CI)	P value
Race: Black vs. White	1.008 (0.824–1.233)	0.938	0.973 (0.795–1.191)	0.789
Race: Other vs. White	0.406 (0.33–0.501)	<0.001	0.662 (0.533–0.823)	<0.001
FIGO: IIB–IVB vs. IA1–IIA2	16.927 (12.978–22.077)	<0.001	7.306 (5.172–10.319)	<0.001
Primary site: other vs. cervix uteri	0.689 (0.577–0.825)	<0.001	0.856 (0.713–1.027)	0.094
Radiation: yes vs. no	0.871 (0.7–1.083)	0.213	1.421 (1.044–1.932)	0.025
Chemotherapy: Yes vs. No	4.285 (3.516–5.224)	<0.001	0.596 (0.474–0.75)	<0.001
Regional nodes: 0–18 vs. 0	0.216 (0.167–0.281)	<0.001	0.444 (0.296–0.667)	<0.001
Regional nodes: 19–90 vs. 0	0.107 (0.072–0.158)	<0.001	0.244 (0.144–0.412)	<0.001
Positive nodes: 0–3 vs. 0	1.419 (1.014–1.985)	0.041	1.783 (1.085–2.93)	0.022
Positive nodes: 4–23 vs. 0	2.507 (1.522–4.129)	<0.001	2.79 (1.497–5.199)	0.001
Marital: married vs. single/unmarried	1.164 (0.988–1.37)	0.069	0.956 (0.808–1.132)	0.603
Marital: divorced/unknown vs. single/unmarried	1.442 (1.244–1.67)	<0.001	1.14 (0.981–1.326)	0.088
Surgery: yes vs. no	0.105 (0.085–0.129)	<0.001	0.42 (0.306–0.576)	<0.001
Age category: 40–44 vs. 21–39	1.095 (0.727–1.649)	0.665	0.96 (0.634–1.454)	0.848
Age category: 45–59 vs. 21–39	2.296 (1.7–3.101)	<0.001	1.364 (0.998–1.864)	0.051
Age category: 60–97 vs. 21–39	6.499 (4.898–8.623)	<0.001	2.361 (1.74–3.204)	<0.001
Tumor type: EC vs. AC	0.724 (0.526–0.997)	0.048	0.809 (0.584–1.121)	0.203

AC, ordinary cervical adenocarcinoma; EC, cervical endometrioid adenocarcinoma; FIGO, Federation International of Gynecology and Obstetrics; DSS, disease-specific survival.

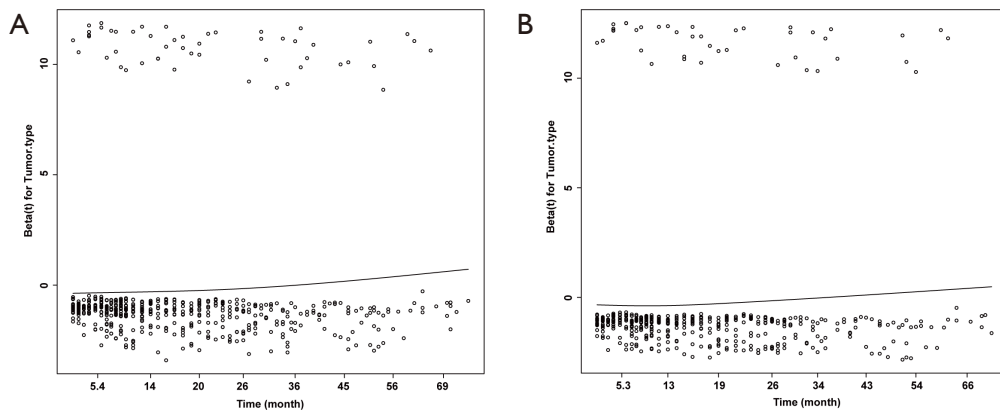


Figure S1 Residual diagram of the PH tests for OS and DSS (A,B). OS, overall survival; DSS, disease-specific survival.

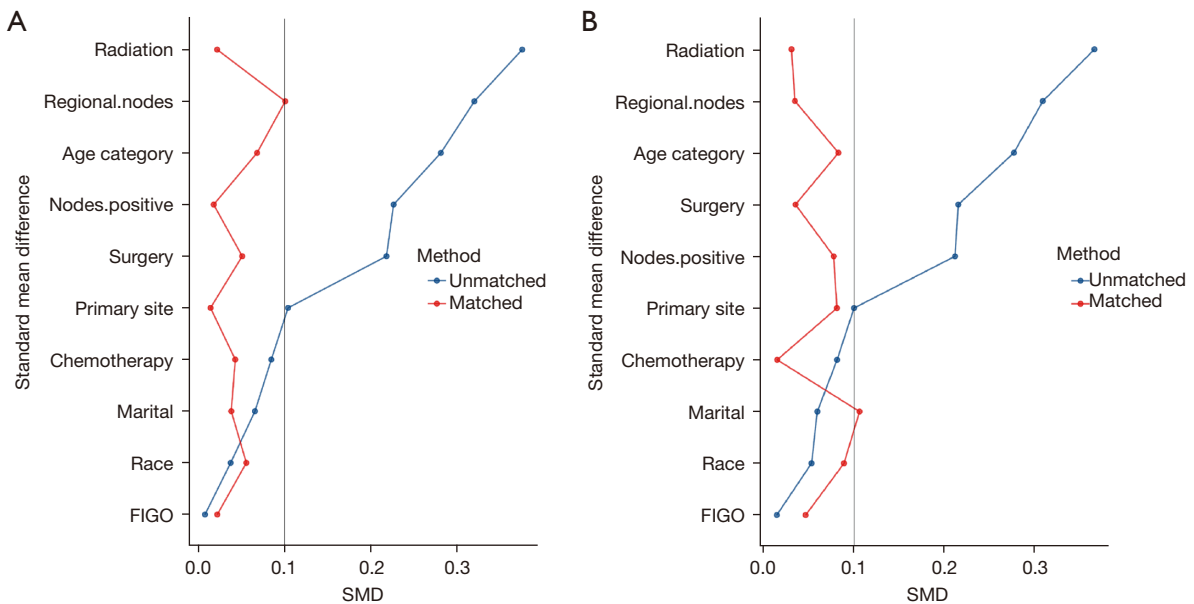


Figure S2 Balance tests of the baseline data before and after PSM (A,B). FIGO, Federation International of Gynecology and Obstetrics; SMD, standard mean difference.

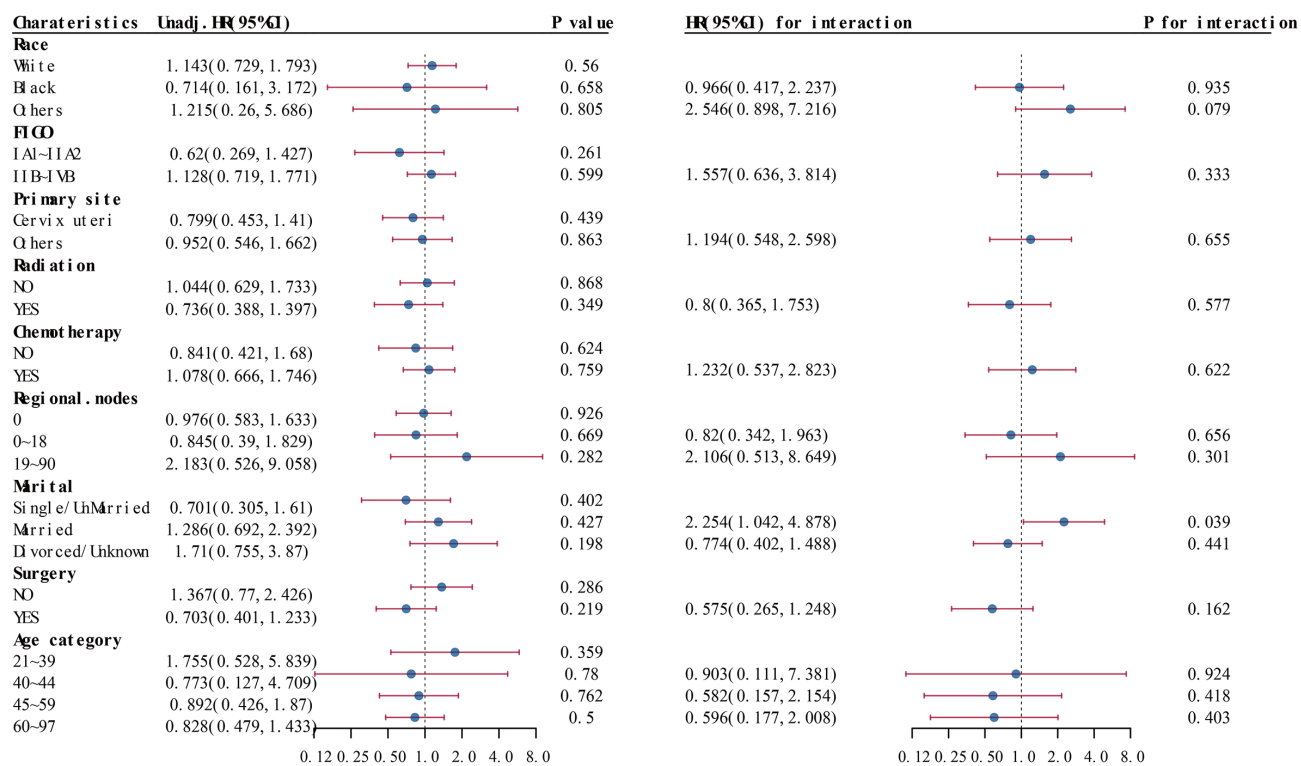


Figure S3 Forest plot of the HRs comparing the EC and AC patients in the multivariate analyses in the matched cohort for OS. EC, cervical endometrioid adenocarcinoma; AC, ordinary cervical adenocarcinoma; OS, overall survival.

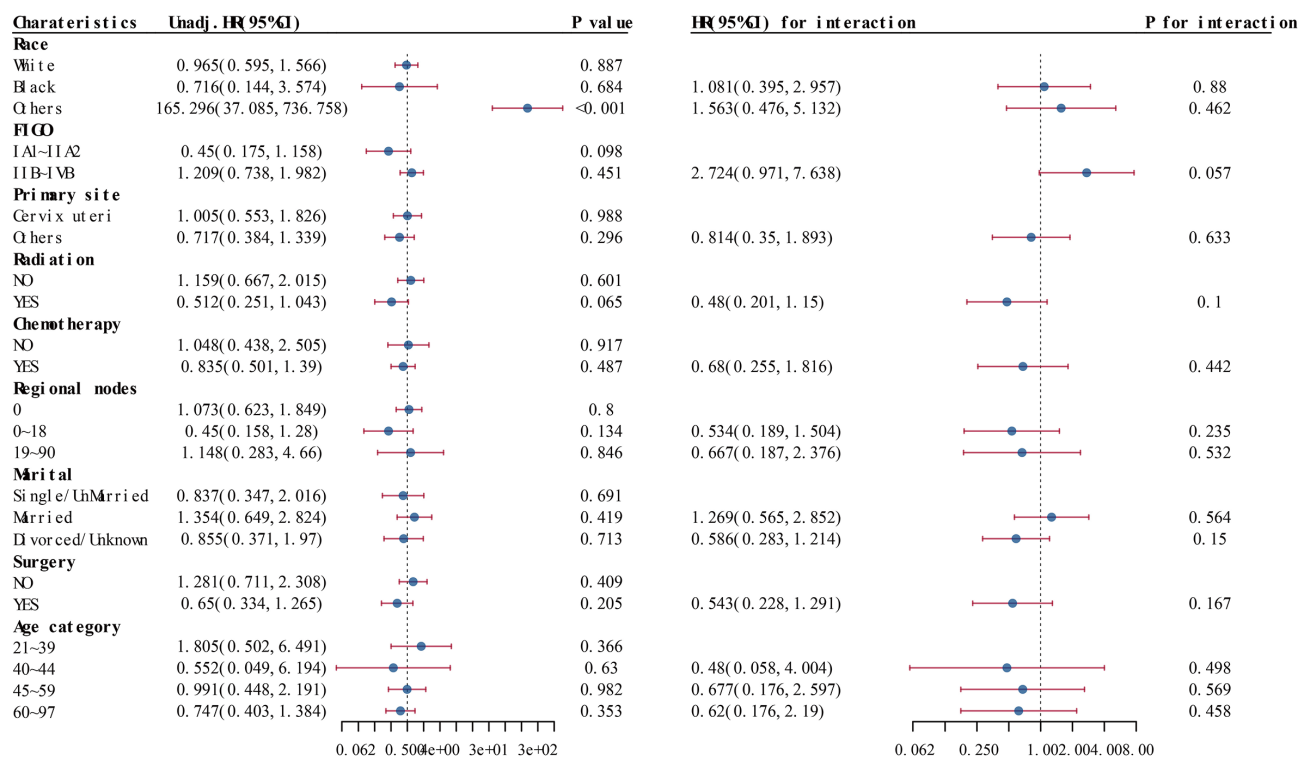


Figure S4 Forest plot of the HRs comparing the EC and AC patients in the multivariate analyses in the matched cohort for DSS. EC, cervical endometrioid adenocarcinoma; AC, ordinary cervical adenocarcinoma; DSS, disease-specific survival.