

Supplementary**Table S1** Characteristics of MIBC patients

Characteristics	Entire cohort	TCGA cohort	GEO cohort
Age, years (mean)	67.689	67.820	66.901
Gender			
Female	110	97	13
Male	318	270	48
T stage			
T2	164	133	31
T3	200	181	19
T4	64	53	11
N stage			
N0	291	244	47
N1	51	43	8
N2	80	74	6
N3	6	6	0
Vital			
Alive	236	208	28
Death	192	159	33

MIBC, muscle invasive bladder cancer; TCGA, The Cancer Genome Atlas dataset; GEO, Gene Expression Omnibus dataset.

Table S2 Differential analysis of tumors and normal samples for 41 ferroptosis prognostic genes

Gene	logFC	pValue	FDR
<i>AGPS</i>	0.118	0.665	0.802
<i>AIFM2</i>	0.416	0.195	0.320
<i>ALOX5</i>	0.052	0.506	0.628
<i>CAV1</i>	-1.225	<0.001	<0.001
<i>DECR1</i>	0.590	0.005	0.012
<i>EGFR</i>	1.076	0.903	0.925
<i>ELAVL1</i>	0.497	<0.001	<0.001
<i>FADS1</i>	1.193	0.007	0.017
<i>FADS2</i>	1.314	0.163	0.278
<i>FZD7</i>	-1.776	<0.001	<0.001
<i>G6PD</i>	0.746	0.002	0.005
<i>GCH1</i>	-0.338	0.326	0.461
<i>IFNG</i>	1.807	0.236	0.359
<i>ISCU</i>	-0.357	<0.001	0.001
<i>LAMP2</i>	0.399	0.120	0.214
<i>MAPK3</i>	0.044	0.731	0.820
<i>MDM4</i>	0.288	0.416	0.551
<i>NEDD4</i>	-0.014	0.350	0.479
<i>PGD</i>	0.072	0.001	0.004
<i>PLA2G6</i>	0.407	0.232	0.359
<i>PRDX6</i>	0.424	0.018	0.039
<i>SCD</i>	2.059	0.000	<0.001
<i>SLC16A1</i>	0.797	0.963	0.963
<i>SLC25A28</i>	0.014	0.706	0.820
<i>SLC7A11</i>	0.879	0.769	0.820
<i>SRC</i>	0.905	0.001	0.002
<i>SREBF2</i>	-0.050	0.300	0.439
<i>STK11</i>	0.407	0.001	0.002
<i>TAZ</i>	0.619	<0.001	<0.001
<i>TFRC</i>	1.349	<0.001	<0.001
<i>TGFBR1</i>	-0.140	0.041	0.081
<i>VDAC2</i>	-0.352	0.002	0.005
<i>WWTR1</i>	-1.788	<0.001	<0.001
<i>ZEB1</i>	-2.554	<0.001	<0.001
<i>ACSL5</i>	0.283	0.456	0.585
<i>BACH1</i>	0.042	0.780	0.820
<i>GCLM</i>	0.888	0.001	0.005
<i>NOX1</i>	0.796	0.040	0.081
<i>SAT2</i>	0.172	0.766	0.820
<i>SLC39A14</i>	-0.780	0.060	0.112
<i>TXNRD1</i>	-0.866	0.007	0.017

LogFC, log₂ Fold Change; FDR, False Discovery Rate.

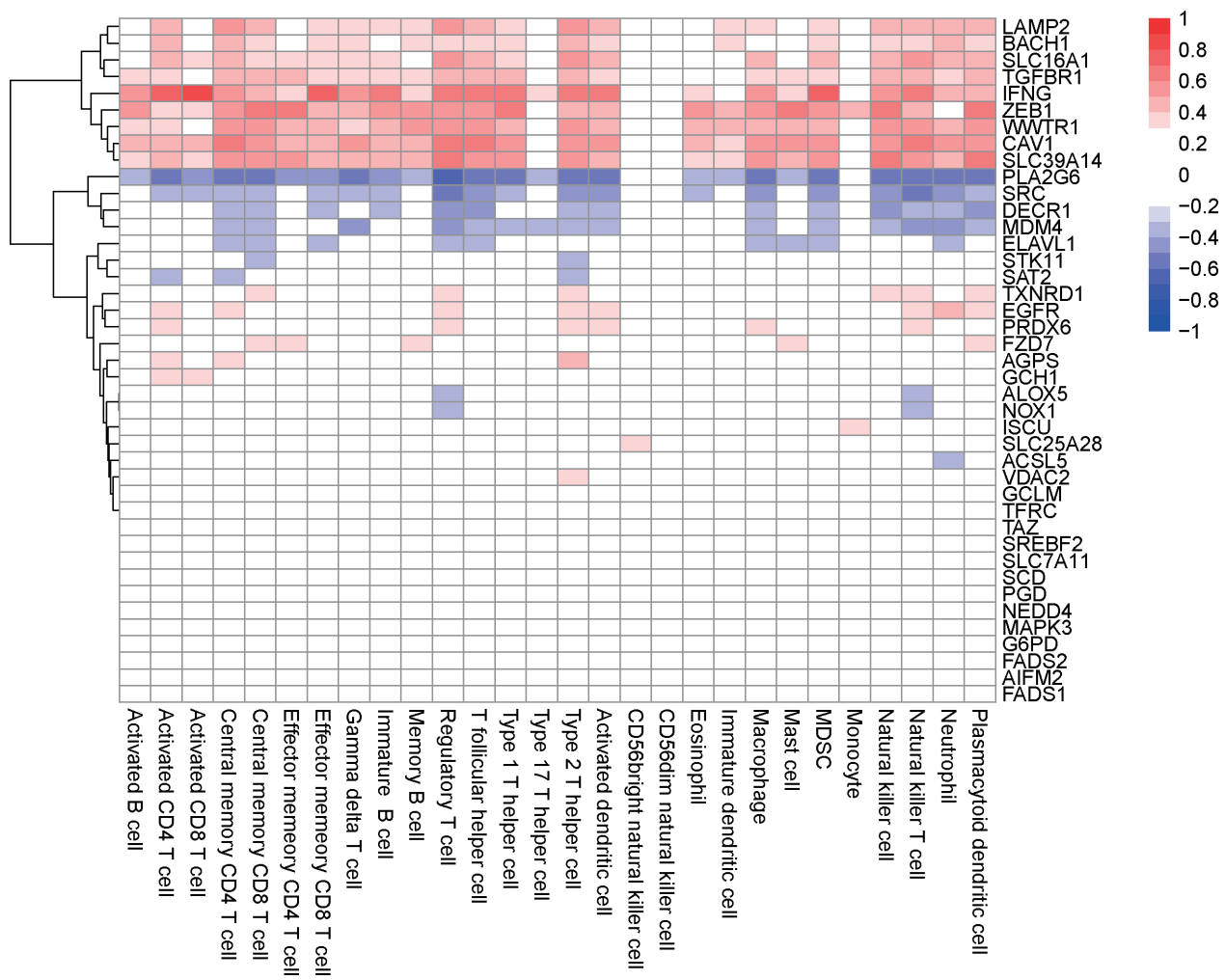


Figure S1 XXXXXX