

Table S1 Results of cross-validation of the signature

	Round 1	Round 2	Round 3	Round 4	Round 5	Round 6	Round 7	Round 8	Round 9	Round 10	Mean
1-year AUC	0.71	0.73	0.72	0.74	0.72	0.70	0.74	0.70	0.71	0.72	0.72
5-year AUC	0.69	0.70	0.69	0.72	0.69	0.68	0.69	0.69	0.69	0.69	0.69
7-year AUC	0.72	0.73	0.73	0.72	0.73	0.69	0.73	0.76	0.71	0.70	0.72

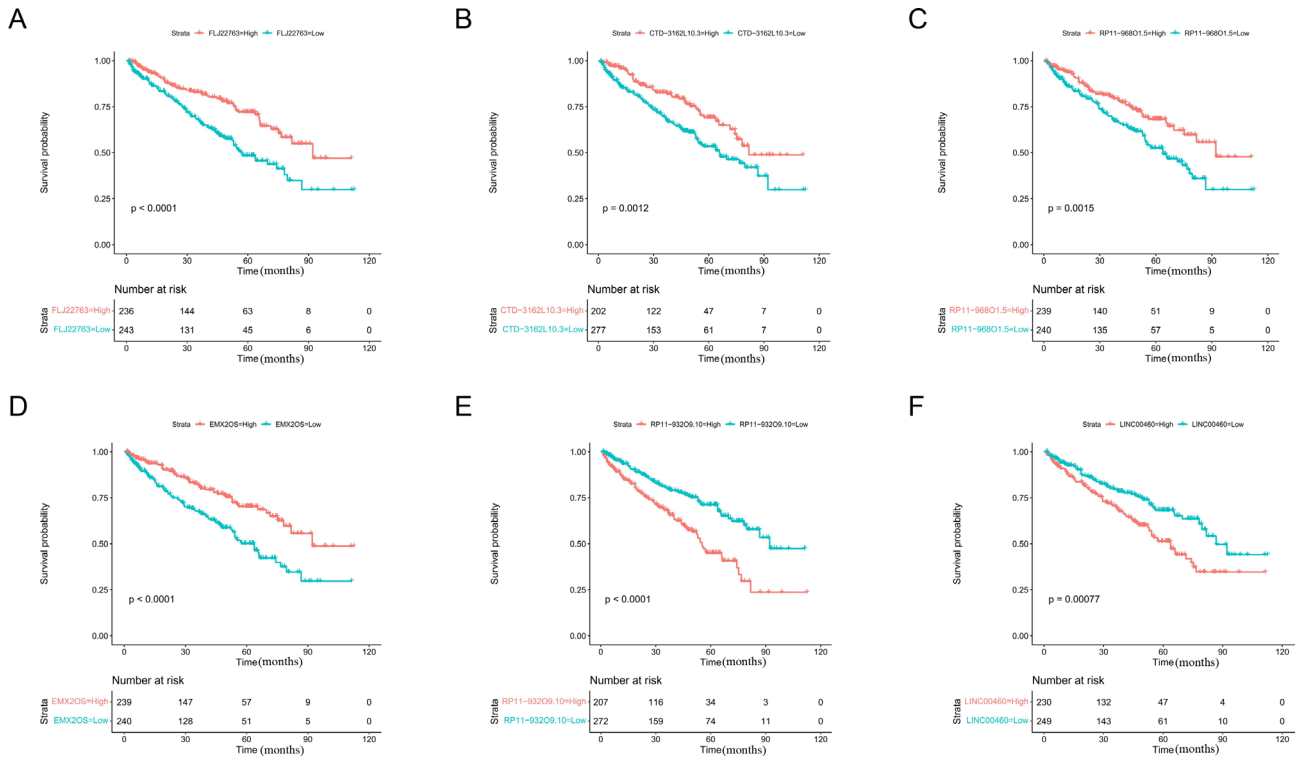


Figure S1 KM survival curve of each lncRNA in the different expression subgroups. (A-F) The overall survival of high- and low-expression of FLJ22763, CTD-3162L10.3, RP11-96801.5, EMX2OS, RP11-93209.10, and LINC00460 are significantly different. LncRNA, long noncoding RNA.

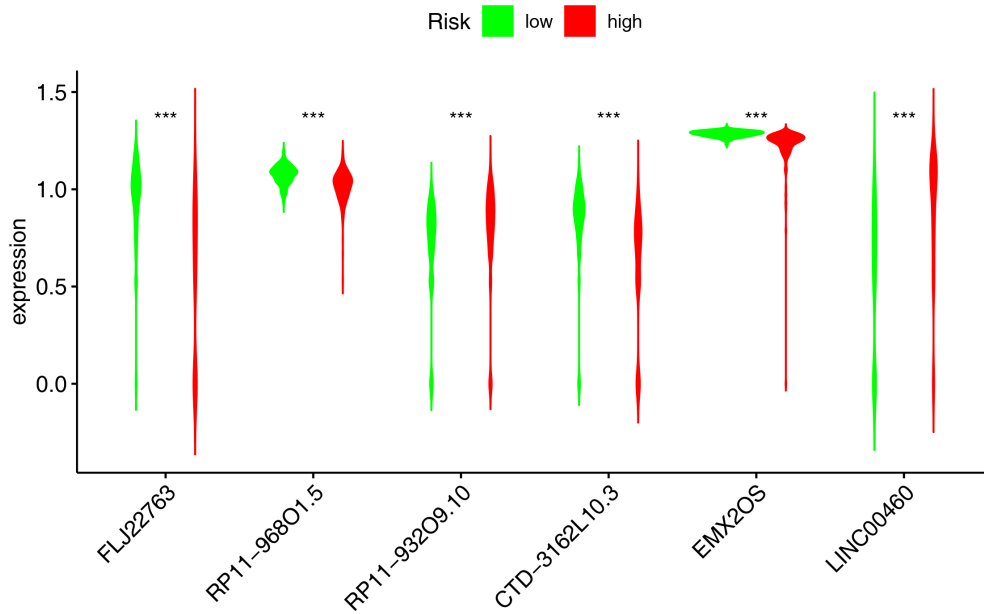


Figure S2 Violin plot of the expression of the six lncRNAs between high- and low-risk groups. ***, $P < 0.001$. LncRNA, long noncoding RNA.

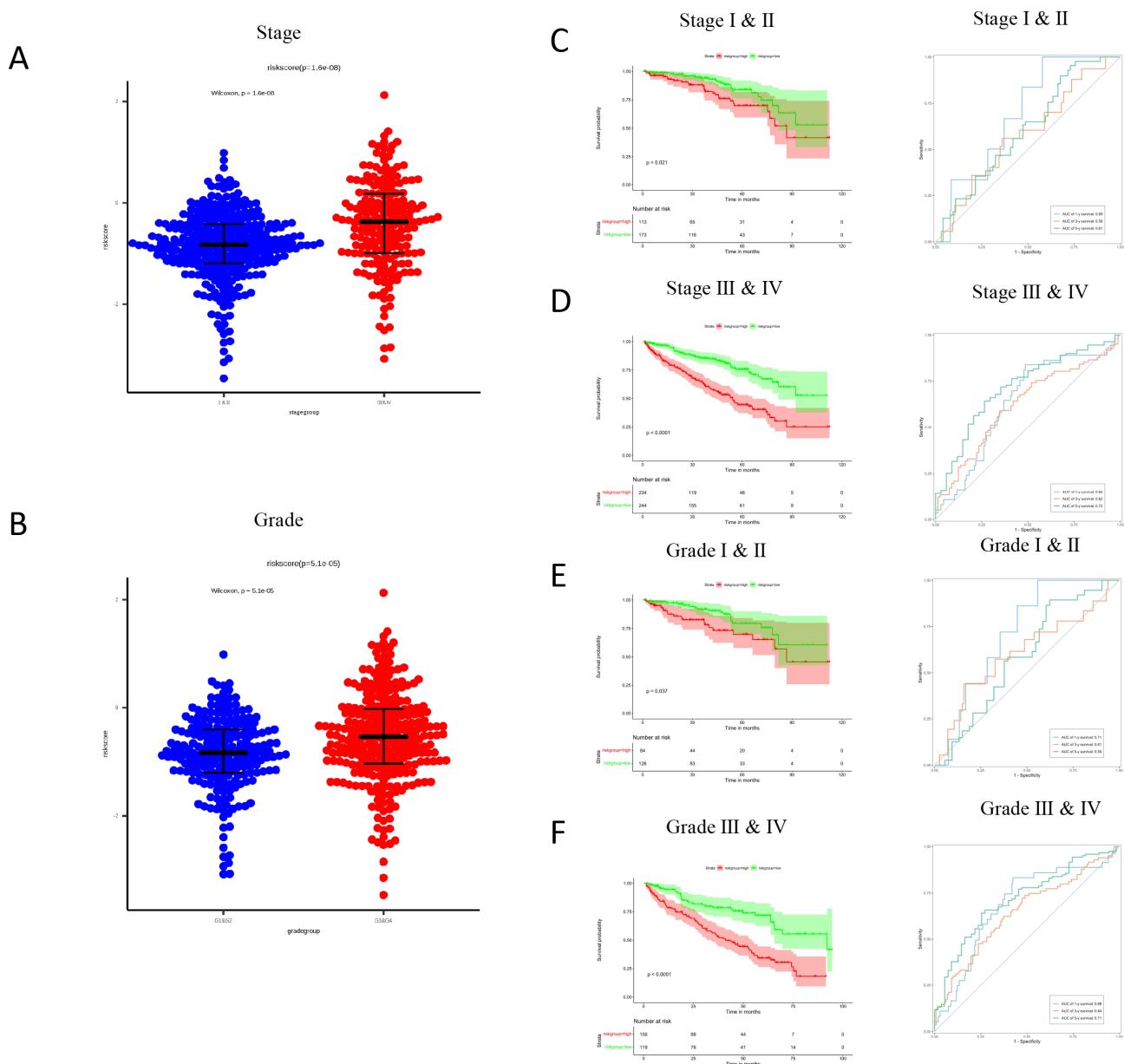


Figure S3 Relationships between risk score and clinicopathological factors. (A) Risk score between advanced- (stages III and IV) and early-stage (stages I and II) ccRCC. (B) Risk scores of high- (grades III and IV) and low-grade (grades I and II) ccRCC. Stratified analysis between the high- and low-risk groups at the same stage (C,D) and grade (E,F). ccRCC, clear cell renal cell carcinoma.